

WAAS CH 49100 W19A	APP CRS 187°	Rwy Idg TDZE Apt Elev	8300 26 26
---------------------------------	------------------------	-----------------------------	---------------------------------------

RNAV (GPS) Z RWY 19L

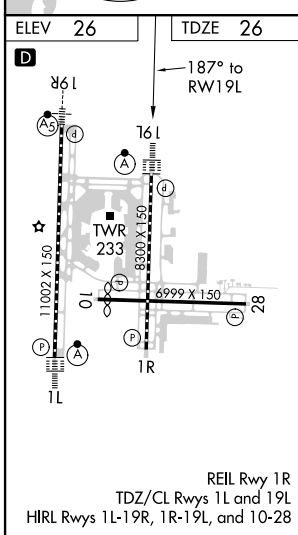
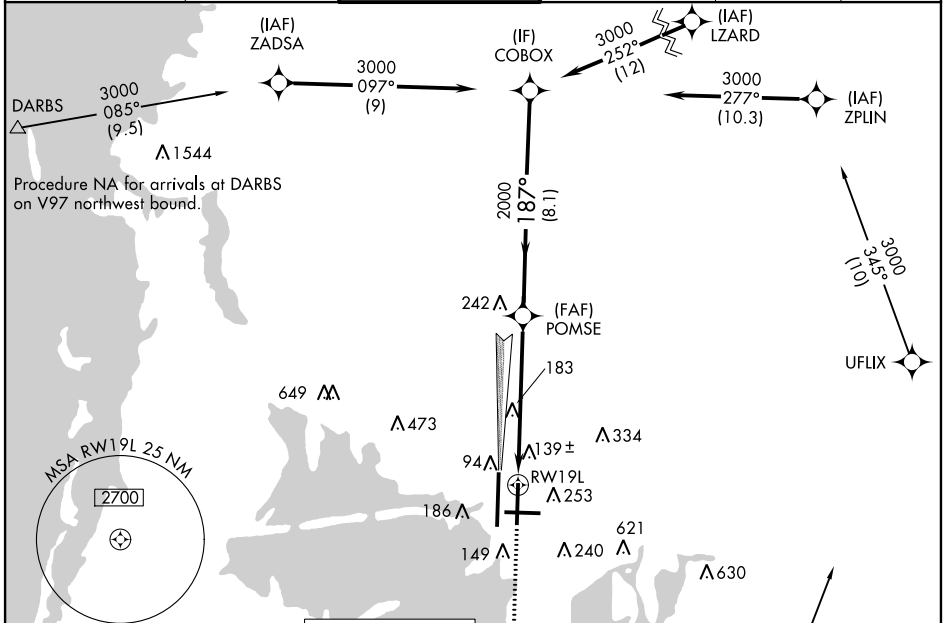
TAMPA INTL (TPA)

⚠ For uncompensated Baro-VNAV systems, LNAV/VNAV NA below -15°C (5°F) or above 43°C (109°F). DME/DME RNP-0.3 NA. Simultaneous approach authorized with Rwy 19R. LNAV procedure NA during simultaneous operations. Use of FD or AP providing RNAV track guidance required during simultaneous operations. ** RVR 1800 authorized with use of FD or AP or HUD to DA.

ALSF-2

MISSED APPROACH:
Climb to 2800 direct CUPUL and on track 147° to GIBBS and hold.

ARR	D-ATIS	DEP	TAMPA APP CON	TAMPA TOWER	GND CON	CLNC DEL	CPDLC
126.45		128.475	118.5 307.175	119.5 269.4	121.7 269.4	133.6	



ELEV 26		TDZE 26	
MISSED APCH FIX			
2800	CUPUL	GIBBS	VGSI and RNAV glidepath not coincident (VGSI Angle 3.00/TCH 61).
↑	✧	△	Procedure Turn NA
*LNAV only.		*1.2 NM to RWY 19L	
CATEGORY	A	B	C
LPV DA**	226/24		200 (200-½)
LNAV/VNAV DA	440/45		414 (500-¾)
LNAV MDA	460/24	434 (500-½)	460/40 434 (500-¾)
C CIRCLING	560-1	534 (600-1)	680-1¾ 980-3 654 (700-1¾) 954 (1000-3)

SE-3, 25 FEB 2021 to 25 MAR 2021

SE-3, 25 FEB 2021 to 25 MAR 2021