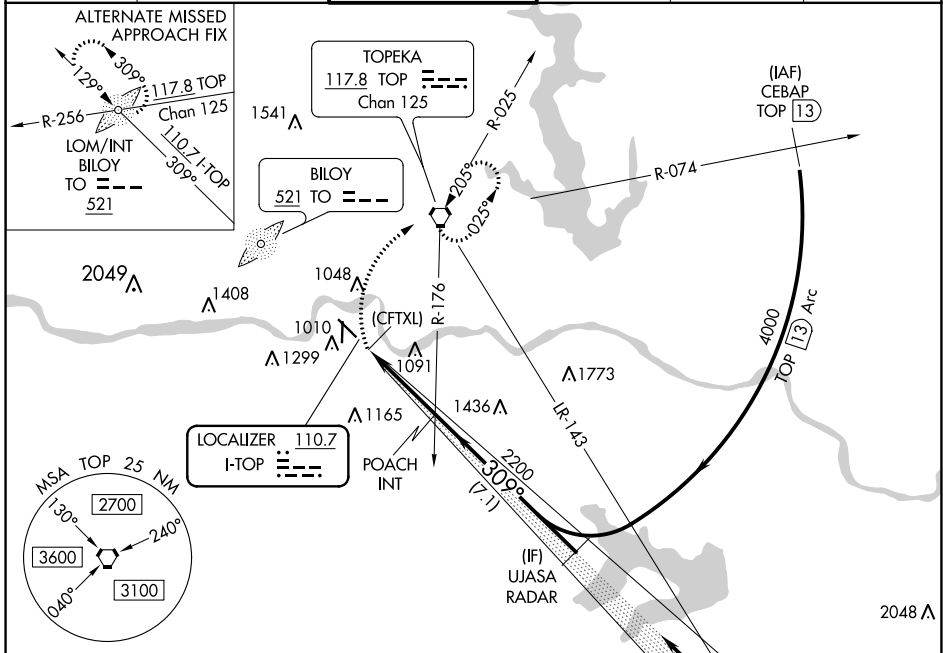


LOC I-TOP 110.7	APP CRS 309°	Rwy Ldg TDZE 5099 880	Apt Elev 881
---------------------------	------------------------	---	------------------------

LOC BC RWY 31
PHILIP BILLARD MUNI (TOP)

▼ RADAR required. MISSED APPROACH: Climbing right turn to 2800 direct TOP VORTAC and hold.

ASOS 121.275	KANSAS CITY CENTER 123.8 343.7	TOPEKA TOWER* 118.7 (CTAF) 0 257.8	GND CON 121.9	CLNC DEL 121.9	UNICOM 122.95
------------------------	--	--	-------------------------	--------------------------	-------------------------



NC-2, 25 FEB 2021 to 25 MAR 2021

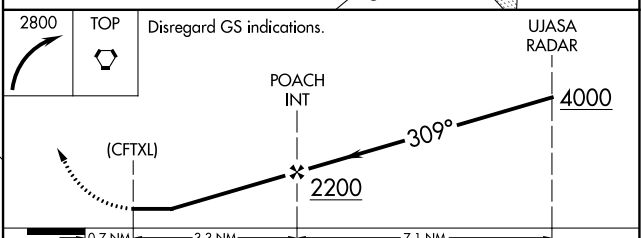
NC-2, 25 FEB 2021 to 25 MAR 2021

ELEV 881	TDZE 880
----------	----------

REIL Rwy 18 and 31
HIRL Rwy 13-31
MIRL Rwy 18-36
FAF to MAP 3.3 NM

Knots	60	90	120	150	180
Min:Sec	3:18	2:12	1:39	1:19	1:06

RADAR REQUIRED BACK COURSE



Disregard GS indications.	UJASA RADAR			
2800 TOP	4000			
(CFTXL)	2200			
0.7 NM	3.3 NM	7.1 NM		
CATEGORY	A	B	C	D
S-31	1400-1	520 (600-1)	1400-1½ 520 (600-1½)	NA
C CIRCLING	1400-1 519 (600-1)	1440-1 559 (600-1)	1600-2 719 (800-2)	NA