

# HI-TACAN RWY 7

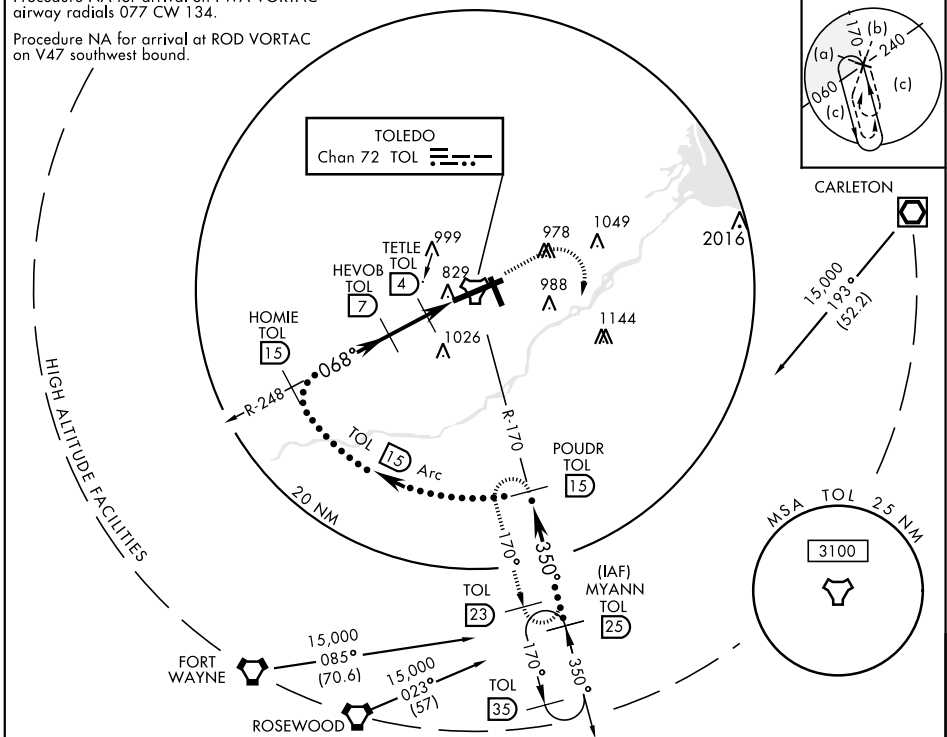
TACAN Chan <b>72</b>	APCH CRS <b>068°</b>	Rwy ldg TDZE Arprt Elev <b>10,599</b> <b>683</b> <b>683</b>
-------------------------	-------------------------	--

JAL-184 [USAF] EUGENE F KRANZ TOLEDO EXPRESS (KTOL)

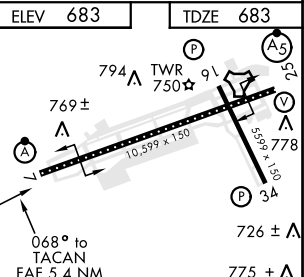
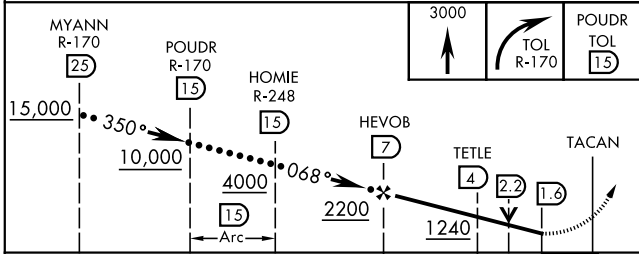
<p><b>V</b> * When ALS inop increase CAT E vis to 1½ mile.</p>	<p>ALSF-2</p>	<p>MISSED APPROACH: Climb to 3000 then right turn via TOL R-170 to POWDR and hold.</p>
--	---------------	--

<p>ATIS <b>118.75 290.225</b></p>	<p>TOLEDO APP CON <b>126.1 317.55</b></p>	<p>TOLEDO TOWER <b>118.1 285.4</b></p>	<p>GND CON <b>121.9 348.6</b></p>	<p>CLNC DEL <b>121.75 348.6</b></p>	<p>ASR</p>
---------------------------------------	---	--	---------------------------------------	---	------------

Procedure NA for arrival on FWA VORTAC  
airway radials 077 CW 134.  
Procedure NA for arrival at ROD VORTAC  
on V47 southwest bound.



EMERG SAFE ALT 100 NM 4000



CATEGORY	C	D	E
S-7 *	1140/45	457 (500-7/8)	
<b>C</b> CIRCLING	1360-2 677 (700-2)	1400-2 ¼ 717 (800-2 ¼)	1400-2 ½ 717 (800-2 ½)

# HI-TACAN RWY 7

EC-2, 25 FEB 2021 to 25 MAR 2021

EC-2, 25 FEB 2021 to 25 MAR 2021