

# HI-TACAN RWY 25

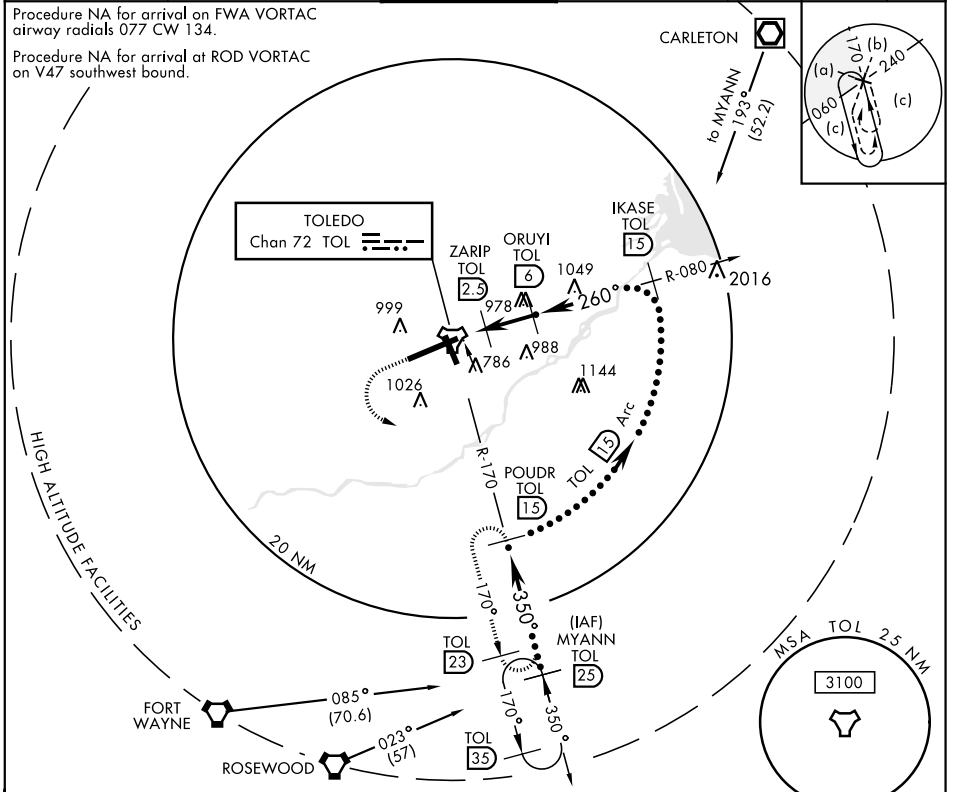
TACAN Chan <b>72</b>	APCH CRS <b>260°</b>	Rwy Ldg TDZE Arprt Elev <b>10,599</b> <b>678</b> <b>683</b>
-------------------------	-------------------------	--

JAL-184 [USAF] EUGENE F KRANZ TOLEDO EXPRESS (KTOL)

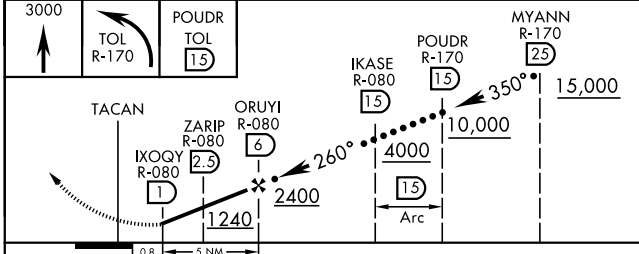
⚠ \* When ALS inop increase CAT C vis to 1 mile.
 
 MALSR
 

 MISSED APPROACH: Climb to 3000 then left turn on TOL R-170 to POUDR and hold.

ATIS <b>118.75 290.225</b>	TOLEDO APP CON <b>126.1 317.55</b>	TOLEDO TOWER <b>118.1 285.4</b>	GND CON <b>121.9 348.6</b>	CLNC DEL <b>121.75 348.6</b>	ASR
-------------------------------	---------------------------------------	------------------------------------	-------------------------------	---------------------------------	-----



EMERG SAFE ALT 100 NM 4000



ELEV 683	TDZE 678
----------	----------

260° to TACAN FAF 5 NM  
 788 A  
 794 A TWR 750  
 769 ± A  
 778 A  
 726 ± A  
 775 ± A

CATEGORY	C	D	E
S-25 *	1040- $\frac{3}{4}$ 362 (400- $\frac{3}{4}$ )	1040-1 362 (400-1)	
CIRCLING	1360-2 677 (700-2)	1400-2 $\frac{1}{4}$ 717 (800-2 $\frac{1}{4}$ )	1400-2 $\frac{1}{2}$ 717 (800-2 $\frac{1}{2}$ )

TOLEDO, OHIO 41° 35' N-83° 48' W EUGENE F KRANZ TOLEDO EXPRESS (KTOL)

Amtd 4C 13AUG20

# HI-TACAN RWY 25

EC-2, 25 FEB 2021 to 25 MAR 2021

EC-2, 25 FEB 2021 to 25 MAR 2021