

HI-ILS Y or LOC Y RWY 7

LOC I-TOL 109.7	APCH CRS 072°	Rwy ldg 10,599 TDZE 683 Arprt Elev 683
---------------------------	-------------------------	--

JAL-184 [USAF]

EUGENE F KRANZ TOLEDO EXPRESS (KTOL)

DME required.

- ▲ *When ALS inop, increase CAT E RVR to 40, vis to 3/4.
- ▲ **When ALS inop, increase CAT E RVR to 60, vis to 1/4.

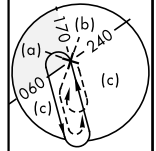
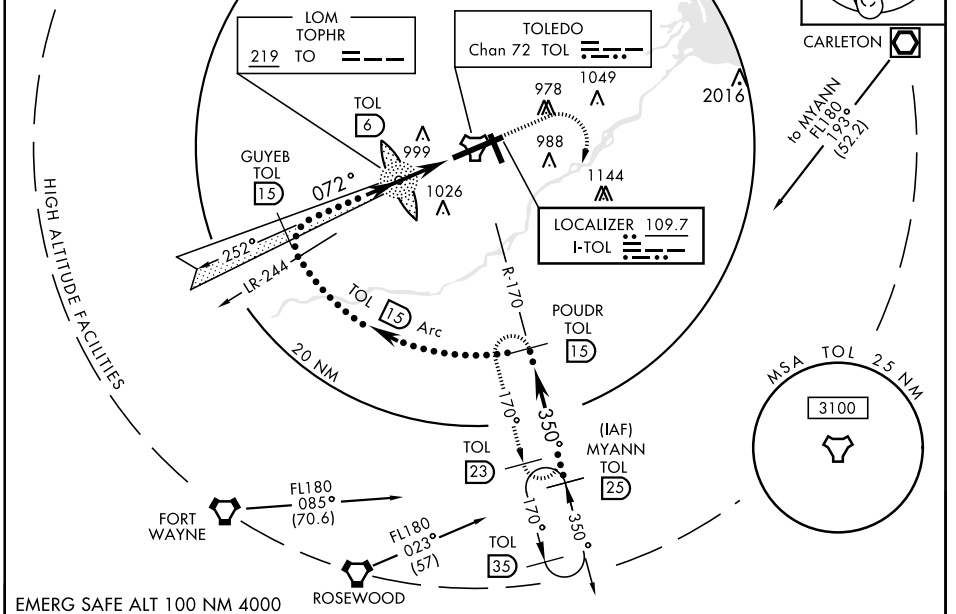
ALSF-2

MISSED APPROACH: Climb to 2500, then climbing right turn to 3000 via TOL R-170 to POU DR and hold.

ATIS 118.75 290.225	TOLEDO APP CON 126.1 317.55	TOLEDO TOWER 118.1 285.4	GND CON 121.9 348.6	CLNC DEL 121.75 348.6	ASR
-------------------------------	---------------------------------------	------------------------------------	-------------------------------	---------------------------------	-----

Procedure NA for arrival on FWA VORTAC airway radials 077 CW 134.

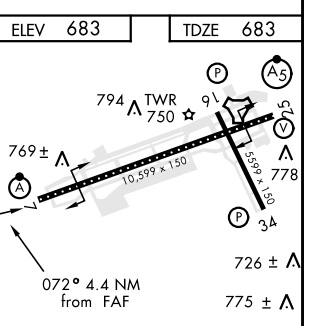
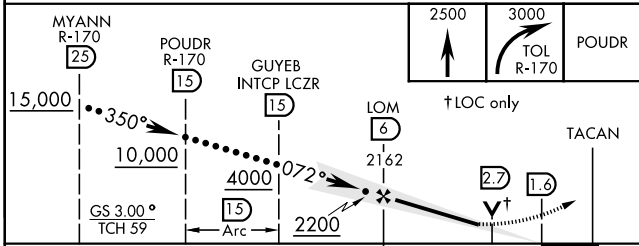
Procedure NA for arrival at ROD VORTAC on V47 southwest bound.



EC-2, 25 FEB 2021 to 25 MAR 2021

EC-2, 25 FEB 2021 to 25 MAR 2021

EMERG SAFE ALT 100 NM 4000



CATEGORY	C	D	E
S-ILS 7 *	883/18	200 (200-3/4)	
S-LOC 7 **	1080/35	397 (400-3/4)	
CIRCLING	1300-1 3/4 617 (700-1 3/4)	1400-2 1/4 717 (800-2 1/4)	1400-2 1/2 717 (800-2 1/2)

HIRL Rwy 7-25
MIRL Rwy 16-34
REIL Rwy 16-34
TDZL/CL Rwy 7

HI-ILS Y or LOC Y RWY 7