

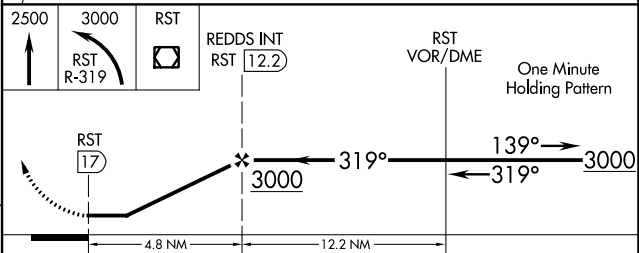
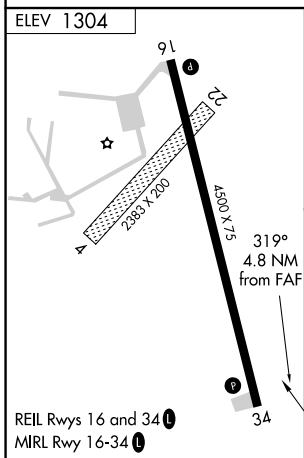
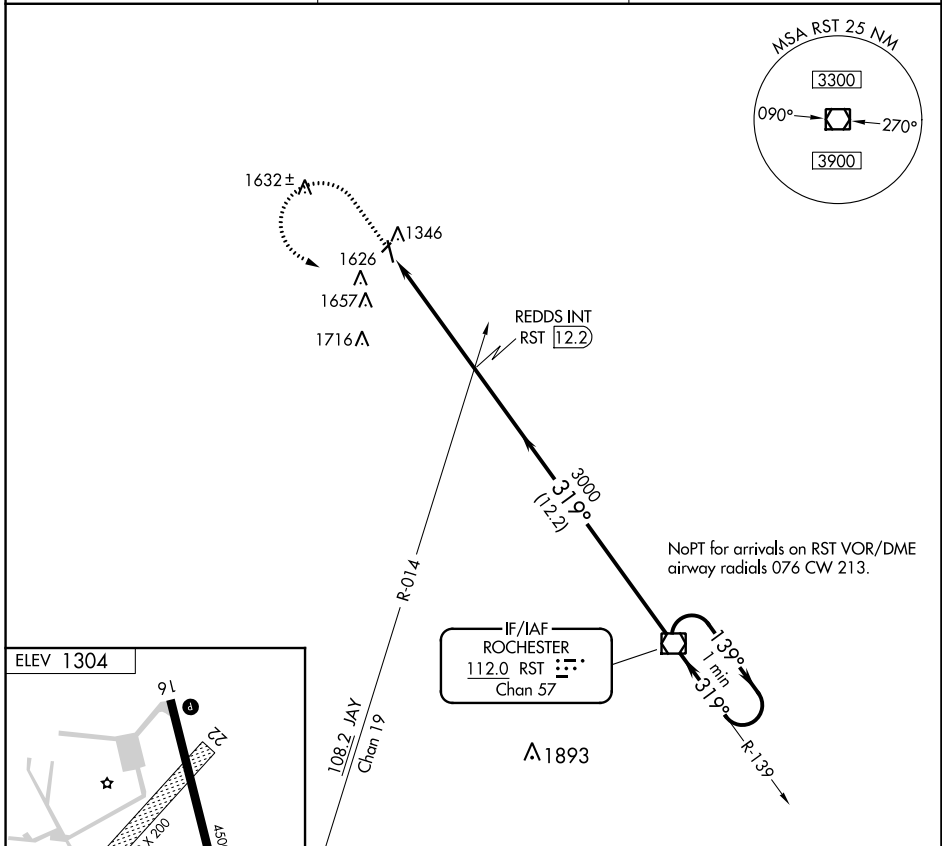
VOR/DME RST <b>112.0</b> Chan <b>57</b>	APP CRS <b>319°</b>	Rwy Idg TDZE Apt Elev <b>N/A</b> <b>N/A</b> <b>1304</b>
---	------------------------	--

**VOR-A**  
DODGE CENTER (TOB)

**⚠** When local altimeter setting not received, use Rochester Intl altimeter setting and increase all MDA 40 feet. Circling Rwy 34 NA at night.

MISSED APPROACH: Climb to 2500 then climbing left turn to 3000 via RST VOR/DME R-319 to RST VOR/DME and hold.

AWOS-3 <b>119.075</b>	ROCHESTER APP CON * <b>119.8 251.125</b>	CTAF <b>122.9</b>
--------------------------	---	----------------------



FAF to MAP 4.8 NM					
Knots	60	90	120	150	180
Min:Sec	4:48	3:12	2:24	1:55	1:36
CATEGORY	A	B	C	D	
<b>C</b> CIRCLING	1960-1 656 (700-1)	1980-1 676 (700-1)	2000-2 696 (700-2)	NA	

NC-1, 25 FEB 2021 to 25 MAR 2021

NC-1, 25 FEB 2021 to 25 MAR 2021