

VOR/DME VIS <b>109.4</b> Chan <b>31</b>	APP CRS <b>133°</b>	Rwy Idg TDZE <b>265</b> Apt Elev <b>265</b>	<b>3901</b>
---	------------------------	---	-------------

# VOR RWY 13

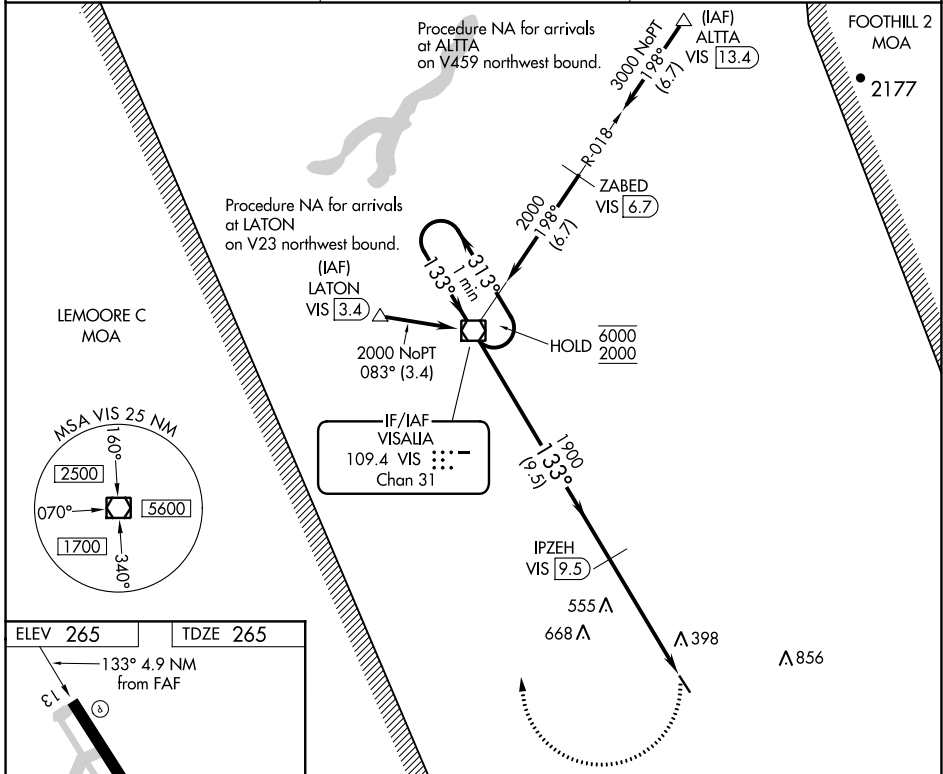
MEFFORD FIELD (TLR)

DME required.

**NA** Circling Rwy 31 NA at night. Rwy 13 helicopter visibility reduction below 3/4 SM NA. When local altimeter setting not received, use Visalia altimeter setting and increase all MDA 40 feet and increase Cat C visibilities 1/8 SM. VDP NA with Visalia altimeter setting.

MISSED APPROACH: Climbing right turn to 2000 direct VIS VOR/DME and hold.

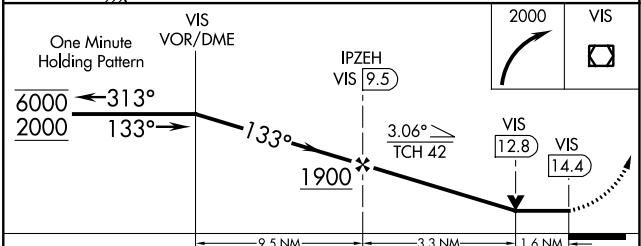
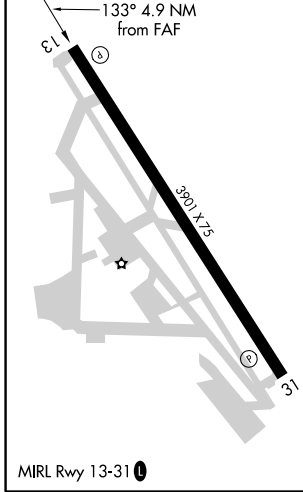
AWOS-3PT <b>120.0</b>	FRESNO APP CON <b>118.5 268.7</b>	UNICOM <b>122.7 (CTAF) 0</b>
--------------------------	--------------------------------------	---------------------------------



SW-2, 25 FEB 2021 to 25 MAR 2021

SW-2, 25 FEB 2021 to 25 MAR 2021

ELEV <b>265</b>	TDZE <b>265</b>
-----------------	-----------------



CATEGORY	A	B	C	D
S-13	820-1	555 (600-1)	820-1½ 555 (600-1½)	NA
<b>C</b> CIRCLING	820-1	555 (600-1)	820-1½ 555 (600-1½)	NA