

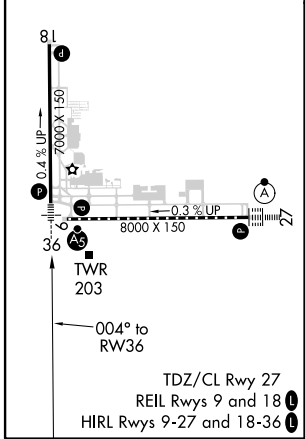
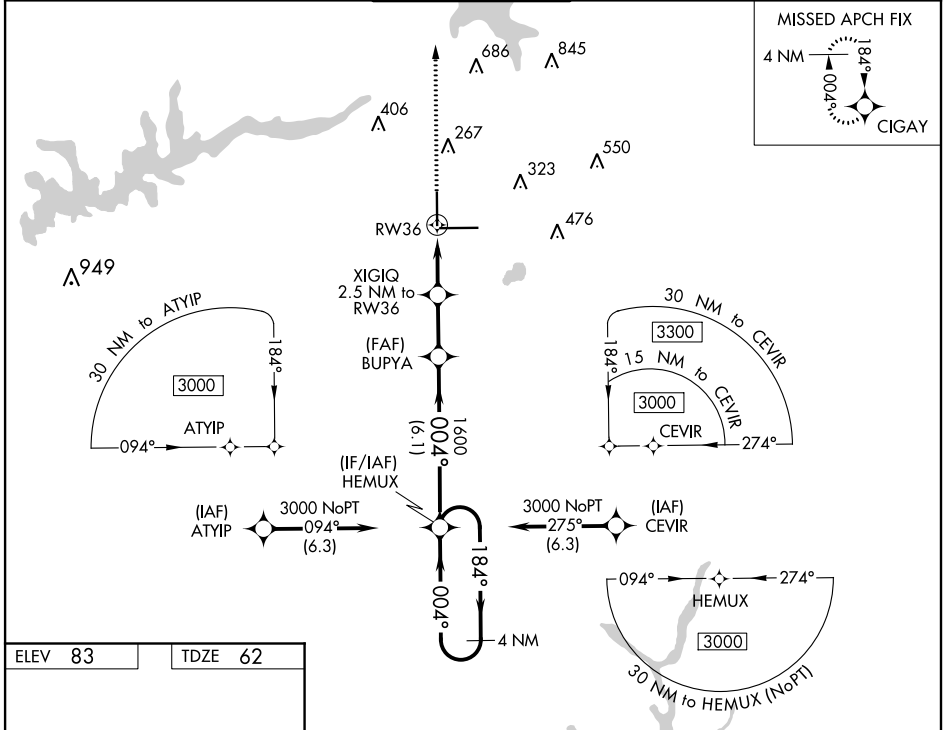
WAAS CH <b>60900</b> <b>W36A</b>	APP CRS <b>004°</b>	Rwy Idg <b>7000</b> TDZE <b>62</b> Apt Elev <b>83</b>
--	------------------------	---

# RNAV (GPS) RWY 36

TALLAHASSEE INTL (TLH)

<p>For uncompensated Baro-VNAV systems, LNAV/VNAV NA below -7°C (20°F) or above 54°C (130°F). DME/DME RNP-0.3 NA. **RVR 1800 authorized with use of FD or AP or HUD to DA.</p>	<p>MALS R</p>	<p>MISSED APPROACH: Climb to 3000 direct CIGAY and hold.</p>

ATIS <b>119.45 239.25</b>	TALLAHASSEE APP CON * <b>135.8 317.4</b>	TALLAHASSEE TOWER * <b>118.7 (CTAF) 257.8</b>	GND CON <b>121.9 348.6</b>	CLNC DEL <b>126.65 275.8</b>	UNICOM <b>123.075</b>
------------------------------	---	--	-------------------------------	---------------------------------	--------------------------



3000	CIGAY	VGSI and RNAV glidepath not coincident (VGSI Angle 3.00/TCH 54).	4 NM
*LNAV only.	XIGIQ 2.5 NM to RW36	BUPYA 1600	HEMUX Holding Pattern
	*1.1 NM to RW36	1600	184° → 3000
		880*	← 004°
		1600	GP 3.00° TCH 45
	1.1 NM	1.4 NM	2.2 NM
		6.1 NM	
CATEGORY	A	B	C
LPV DA **	262/24		200 (200-½)
LNAV/VNAV DA	364/24		302 (300-½)
LNAV MDA	460/24	398 (400-½)	460/35 398 (400-½)
CIRCLING	580-1 497 (500-1)	600-1 517 (600-1)	640-1½ 557 (600-1½) 800-2¼ 717 (800-2¼)

SE-3, 25 FEB 2021 to 25 MAR 2021

SE-3, 25 FEB 2021 to 25 MAR 2021