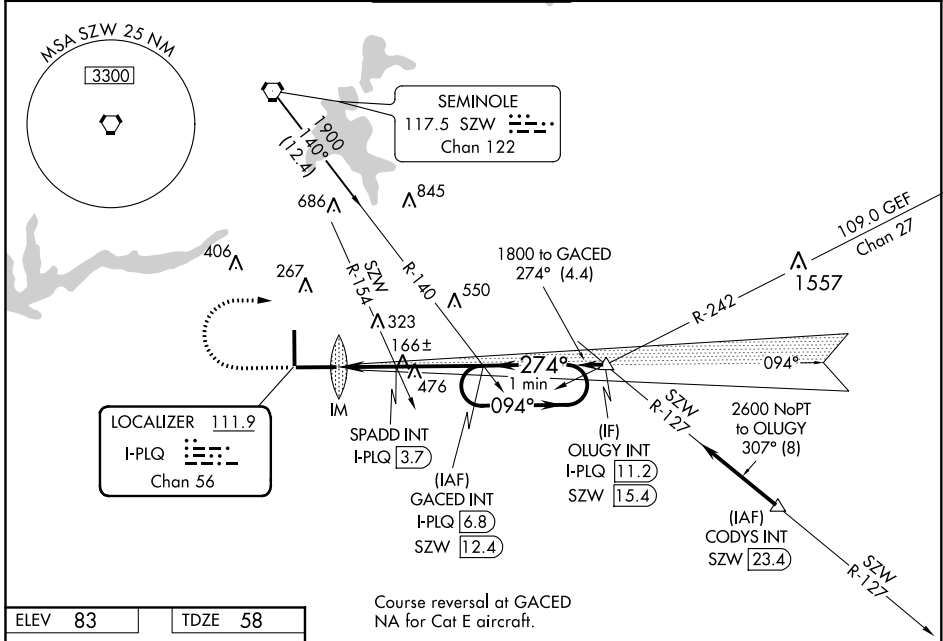


LOC/DME I-PLQ 111.9 Chan 56	APP CRS 274°	Rwy Idg 8000
	TDZE 58	Apt Elev 83

ILS or LOC RWY 27

TALLAHASSEE INTL (TLH)

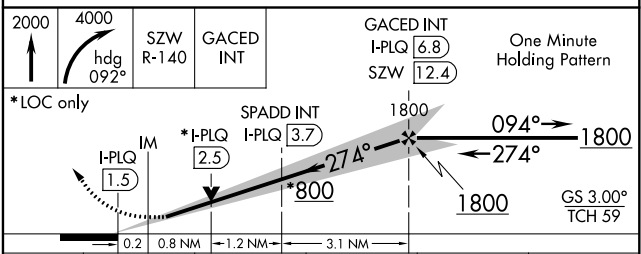
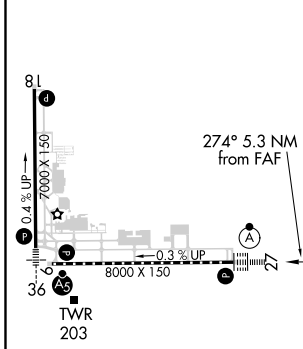
DME required.	ALSF-2	MISSED APPROACH: Climb to 2000 then climbing right turn to 4000 on heading 092° and on SZW VORTAC R-140 to GACED INT/SZW 12.4 DME and hold, continue climb-in-hold to 4000.						
<p>▼ For inop ALS, increase S-ILS 27 Cat E visibility to RVR 4000 and S-LOC 27 Cats C, D and E visibility to 2 SM. SPADD FIX MINIMUMS increase S-LOC 27 Cats C, D and E visibility to RVR 5500.</p> <p>▲ ASR</p>								
<table border="1"> <tr> <td>ATIS 119.45 239.25</td> <td>TALLAHASSEE APP CON ★ 135.8 317.4</td> <td>TALLAHASSEE TOWER ★ 118.7 (CTAF) 257.8</td> <td>GND CON 121.9 348.6</td> <td>CLNC DEL 126.65 275.8</td> <td>UNICOM 123.075</td> </tr> </table>	ATIS 119.45 239.25	TALLAHASSEE APP CON ★ 135.8 317.4	TALLAHASSEE TOWER ★ 118.7 (CTAF) 257.8	GND CON 121.9 348.6	CLNC DEL 126.65 275.8	UNICOM 123.075		
ATIS 119.45 239.25	TALLAHASSEE APP CON ★ 135.8 317.4	TALLAHASSEE TOWER ★ 118.7 (CTAF) 257.8	GND CON 121.9 348.6	CLNC DEL 126.65 275.8	UNICOM 123.075			



SE-3, 25 FEB 2021 to 25 MAR 2021

SE-3, 25 FEB 2021 to 25 MAR 2021

ELEV 83	TDZE 58
----------------	----------------



CATEGORY	A	B	C	D	E
S-ILS 27	258/18 200 (200-½)				
S-LOC 27	800/24 742 (800-½)	800/40 742 (800-¾)	800-1¾ 742 (800-1¾)		
CIRCLING	800-1 717 (800-1)	800-1¼ 717 (800-1¼)	800-2 717 (800-2)	800-2¼ 717 (800-2¼)	1000-3 917 (1000-3)
SPADD FIX MINIMUMS					
S-LOC 27	420/24	362 (400-½)	420/35 362 (400-¾)		
CIRCLING	580-1 497 (500-1)	600-1 517 (600-1)	640-1½ 557 (600-1½)	800-2¼ 717 (800-2¼)	1000-3 917 (1000-3)

TDZ/CL Rwy 27	REIL Rwys 9 and 18	HIRL Rwys 9-27 and 18-36			
FAF to MAP 5.3 NM					
Knots	60	90	120	150	180
Min:Sec	5:18	3:32	2:39	2:07	1:46