

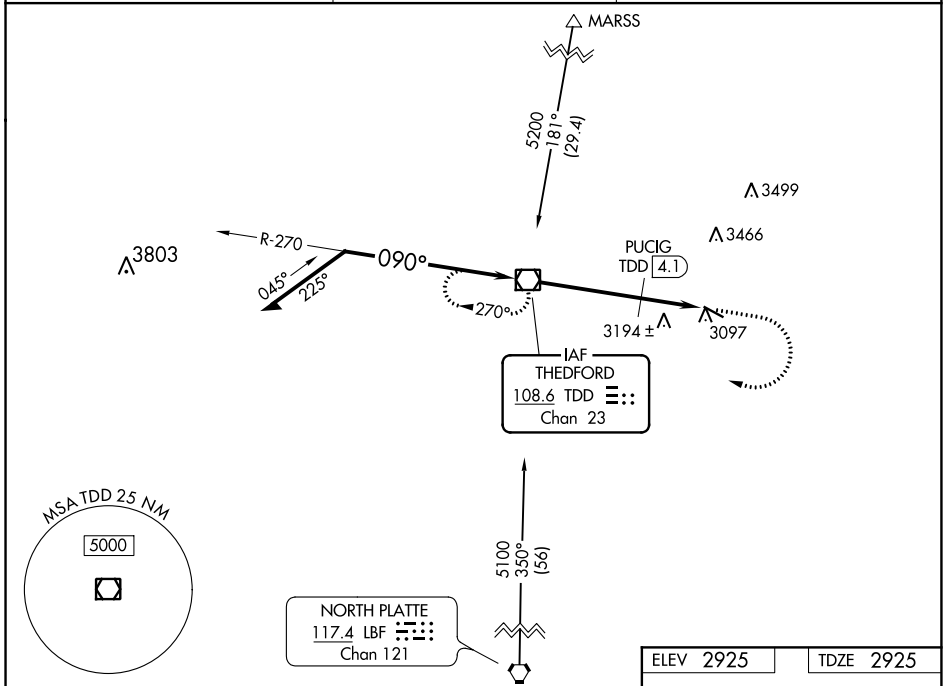
VOR/DME TDD 108.6 Chan 23	APP CRS 090°	Rwy Idg TDZE Apt Elev	4400 2925 2925
---	------------------------	-----------------------------	---

VOR RWY 11
THOMAS COUNTY (TIF)

NA Visibility reduction by helicopters NA. When local altimeter setting not received, use North Platte altimeter setting and increase all MDA 140 feet, increase S-11 Cat B and Circling Cat B visibility 1/4 mile. VDP NA when using North Platte altimeter setting.

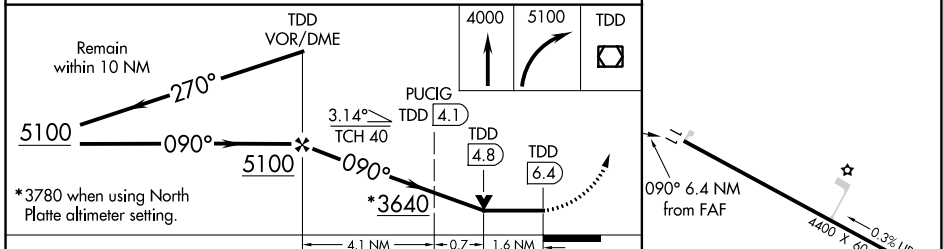
MISSED APPROACH: Climb to 4000 then climbing right turn to 5100 direct TDD VOR/DME and hold.

AWOS-3 120.825	DENVER CENTER 127.95 338.2	CTAF 122.9
--------------------------	--------------------------------------	----------------------



NC-2, 25 FEB 2021 to 25 MAR 2021

NC-2, 25 FEB 2021 to 25 MAR 2021



CATEGORY	TDD VOR/DME		TDD
	A	B	
S-11	3640-1	715 (800-1)	NA
CIRCLING	3640-1	715 (800-1)	NA
PUCIG FIX MINIMUMS			
S-11	3500-1	575 (600-1)	NA
CIRCLING	3500-1	575 (600-1)	NA

ELEV 2925	TDZE 2925
MIRL Rwy 11-29	
FAF to MAP 6.4 NM	
Knots	60 90 120 150 180
Min:Sec	6:30 4:20 3:15 2:36 2:10