

LOC/DME I-TEX <b>109.3</b> Chan 30	APP CRS <b>093°</b>	Rwy Idg <b>6911</b> TDZE <b>9037</b> Apt Elev <b>9070</b>
--	------------------------	---

# LOC RWY 9

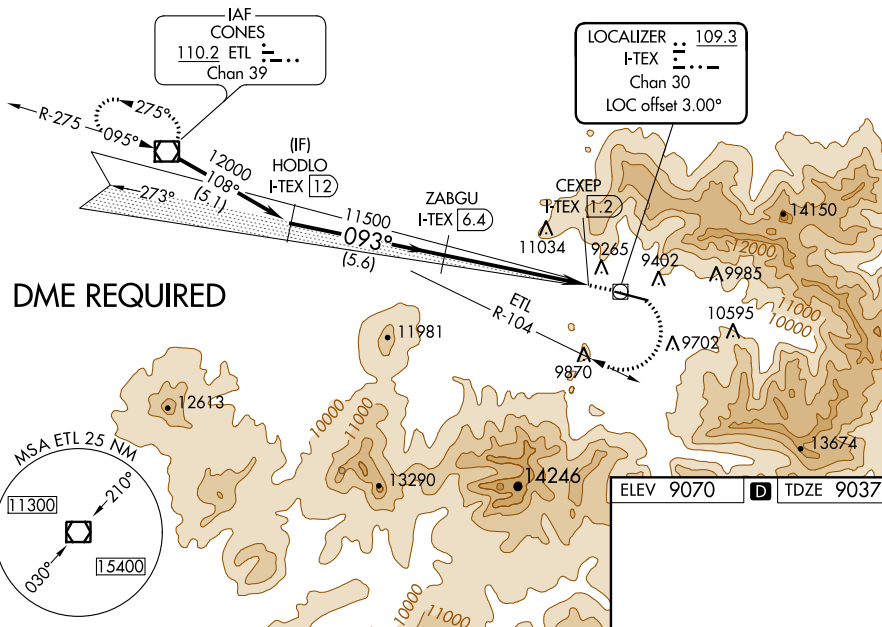
TELLURIDE RGNL (TEX)

**⚠** Circling NA north of Rwy 9-27.  
**⚠** Circling NA at night.  
**⚠** DME required.

MISSED APPROACH: Climb to 11800 then dimbing right turn to 13500 on ETL R-104 to ETL VOR/DME and hold.

AWOS-3 <b>118.325</b>	DENVER CENTER <b>125.35 354.05</b>	UNICOM <b>123.0 (CTAF) 0</b>
--------------------------	---------------------------------------	---------------------------------

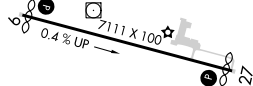
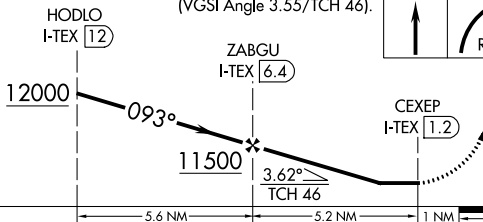
Procedure NA for arrivals at ETL VOR/DME on V382 northwest bound.



**DME REQUIRED**

ELEV 9070	<b>D</b>	TDZE 9037
-----------	----------	-----------

VGSI and descent angles not coincident (VGSI Angle 3.55/TCH 46).



CATEGORY	A	B	C	D
S-9	11340-1¼ 2303 (2300-1¼)	11340-1½ 2303 (2300-1½)		NA
<b>C</b> CIRCLING	11340-1¼ 2270 (2300-1¼)	11340-1½ 2270 (2300-1½)		NA

HIRL Rwy 9-27 **0**  
REIL Rwys 9 and 27 **0**

SW-1, 25 FEB 2021 to 25 MAR 2021

SW-1, 25 FEB 2021 to 25 MAR 2021