

WAAS CH <b>93623</b> <b>W31A</b>	APP CRS <b>316°</b>	Rwy Idg <b>4400</b> TDZE <b>660</b> Apt Elev <b>660</b>
--	------------------------	---

# RNAV (GPS) RWY 31

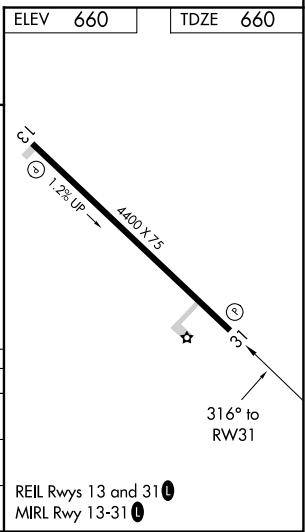
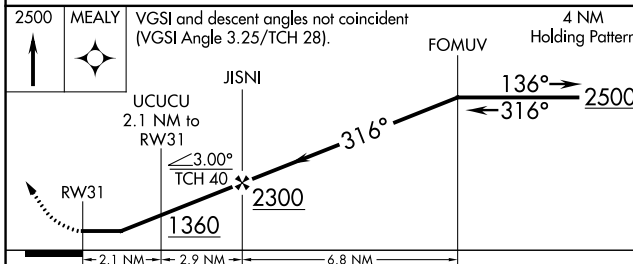
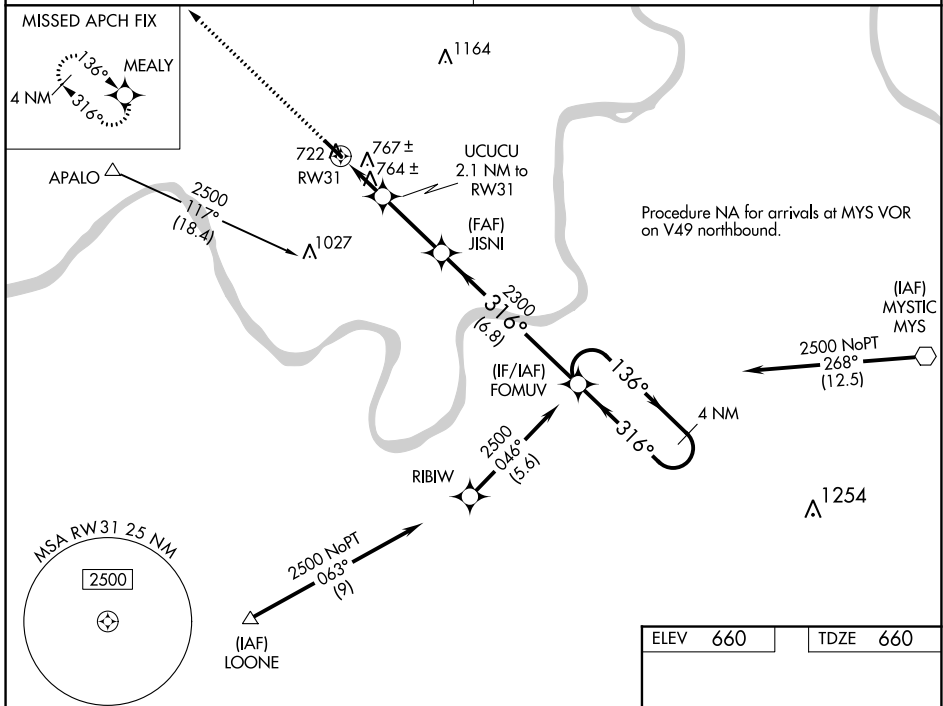
PERRY COUNTY MUNI (TEL)

**▽** When VGSI inop, Circling Rwy 13 NA at night. When VGSI inop, Straight-in/Circling Rwy 31 procedure NA at night. DME/DME RNP-0.3 NA. Visibility reduction by helicopters NA.  
**△** NA Obtain local altimeter setting on CTAF; when not received, use Huntingburg altimeter setting and increase all MDA 80 feet and increase LP and LNAV Cat C visibility ¼ mile.

**MISSED APPROACH:**  
Climb to 2500 direct MEALY and hold.

EVANSVILLE APP CON \*  
**124.025 290.9**

UNICOM  
**122.7 (CTAF) 0**



CATEGORY	A	B	C	D
LP MDA		1020-1 360 (400-1)		NA
LNAV MDA		1020-1 360 (400-1)		NA
CIRCLING	1080-1 420 (500-1)	1120-1 460 (500-1)	1120-1½ 460 (500-1½)	NA

EC-2, 25 FEB 2021 to 25 MAR 2021

EC-2, 25 FEB 2021 to 25 MAR 2021