

LOC/DME I-TJL 110.15 Chan 38 (Y)	APP CRS 195°	Rwy Idg TDZE Apt Elev	6230 6 8
--	------------------------	-----------------------------	-------------------------------------

ILS or LOC RWY 19

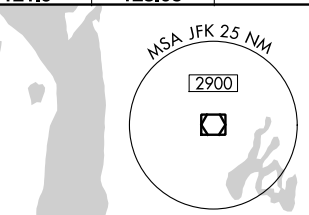
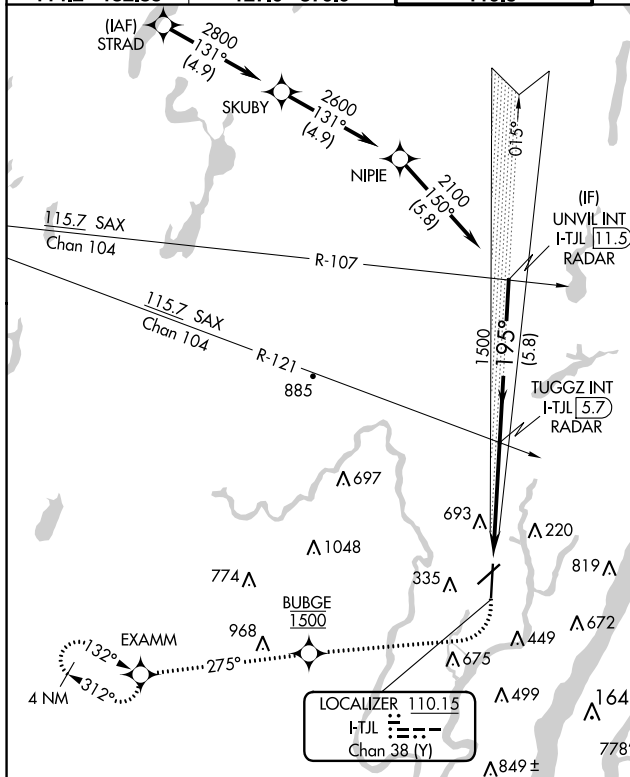
TETERBORO (TEB)

RNAV 1-GPS or RADAR required for procedure entry.
From STRAD: RNAV 1-GPS required.
RADAR required. RNAV 1-GPS from MAP to EXAMM.

MISSED APPROACH: Climb to 500 then climbing right turn direct BUBGE, cross BUBGE at 1500, then climb to 3000 on track 275° to EXAMM and hold, continue climb-in-hold to 3000.

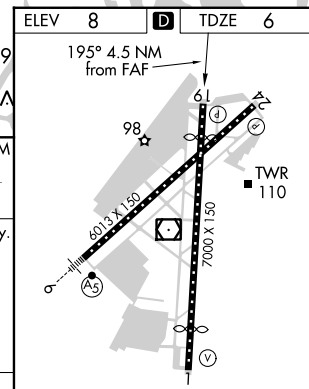
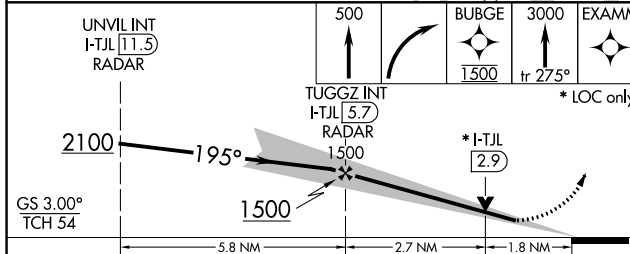
⚠ Circling NA for Cats B, C, D northwest of Rwy 6-19.

D-ATIS 114.2	132.85	NEW YORK APP CON 127.6	379.9	TETERBORO TOWER 119.5	GND CON 121.9	CLNC DEL 128.05	CPDLC
------------------------	---------------	----------------------------------	--------------	--	-------------------------	---------------------------	-------



NE-2, 25 FEB 2021 to 25 MAR 2021

NE-2, 25 FEB 2021 to 25 MAR 2021



CATEGORY	A	B	C	D
S-ILS 19		219-3/4	213 (300-3/4)	
S-LOC 19	640-1	634 (700-1)	640-1 3/4	634 (700-1 3/4)
C CIRCLING	760-1	752 (800-1)	820-2 1/2	1040-3
			812 (900-2 1/2)	1032 (1100-3)

TDZ/CL Rwys 6 and 19	REIL Rwys 1, 6, 19 and 24	HIRL Rwys 1-19 and 6-24
FAF to MAP 4.5 NM		
Knots	60	90 120 150 180
Min:Sec	4:30	3:00 2:15 1:48 1:30