

WAAS CH 58017 W06A	APP CRS 057°	Rwy ldg TDZE Apt Elev	4479 367 374
----------------------------------------	------------------------	-----------------------------	-----------------------------------------

RNAV (GPS) RWY 6

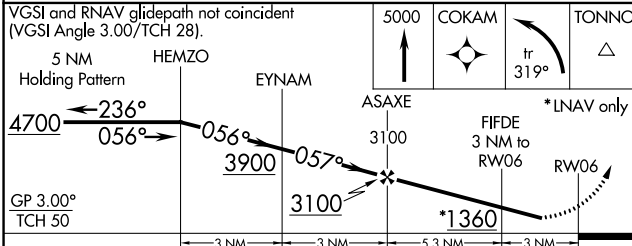
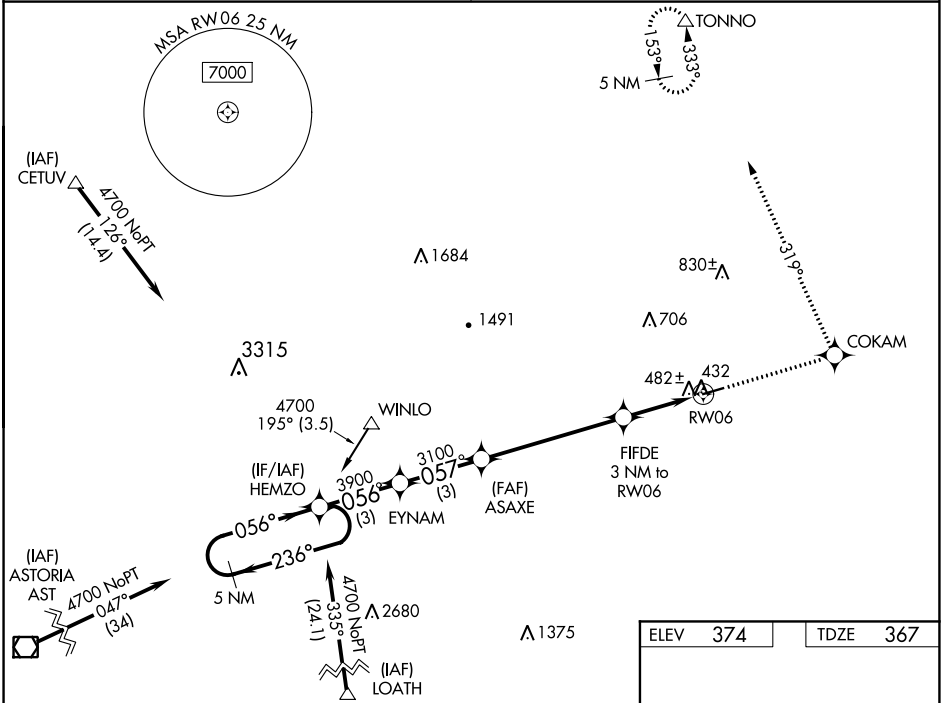
ED CARLSON MEMORIAL FIELD-SOUTH LEWIS COUNTY (TDO)

NA Circling NA at night. Baro-VNAV NA. DME/DME RNP-0.3 NA. Visibility reduction by helicopters NA. Use Chehalis altimeter setting, when not received use Kelso altimeter setting and increase all DA/MDA 40 feet and increase LNAV/VNAV visibility all Cats ¼ mile.

MISSED APPROACH: Climb to 5000 direct COKAM and left turn on track 319° to TONNO and hold, continue climb-in-hold to 5000.

SEATTLE CENTER
124.2 317.6

CTAF
122.9 0



ELEV	374	TDZE	367
------	-----	------	-----

0.4% UP → 4479 X 150

REIL Rwy 6 and 24
MIRL Rwy 6-24

CATEGORY	A	B	C	D
LPV DA		767-1½	400 (400-1½)	
LNAV/VNAV DA		813-1½	446 (500-1½)	
LNAV MDA	800-1	433 (500-1)	800-1¼ 433 (500-1¼)	800-1½ 433 (500-1½)
CIRCLING	900-1	526 (600-1)	900-1½ 526 (600-1½)	940-2 566 (600-2)

RNAV (GPS) RWY 6

NW-1, 25 FEB 2021 to 25 MAR 2021

NW-1, 25 FEB 2021 to 25 MAR 2021