

VORTAC LDK <b>117.8</b> Chan <b>125</b>	APP CRS <b>235°</b>	Rwy Idg <b>6499</b> TDZE <b>164</b> Apt Elev <b>170</b>
---	------------------------	---

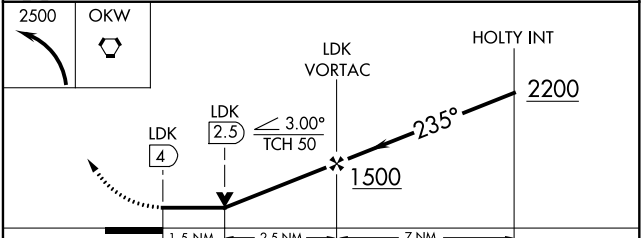
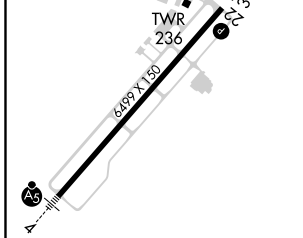
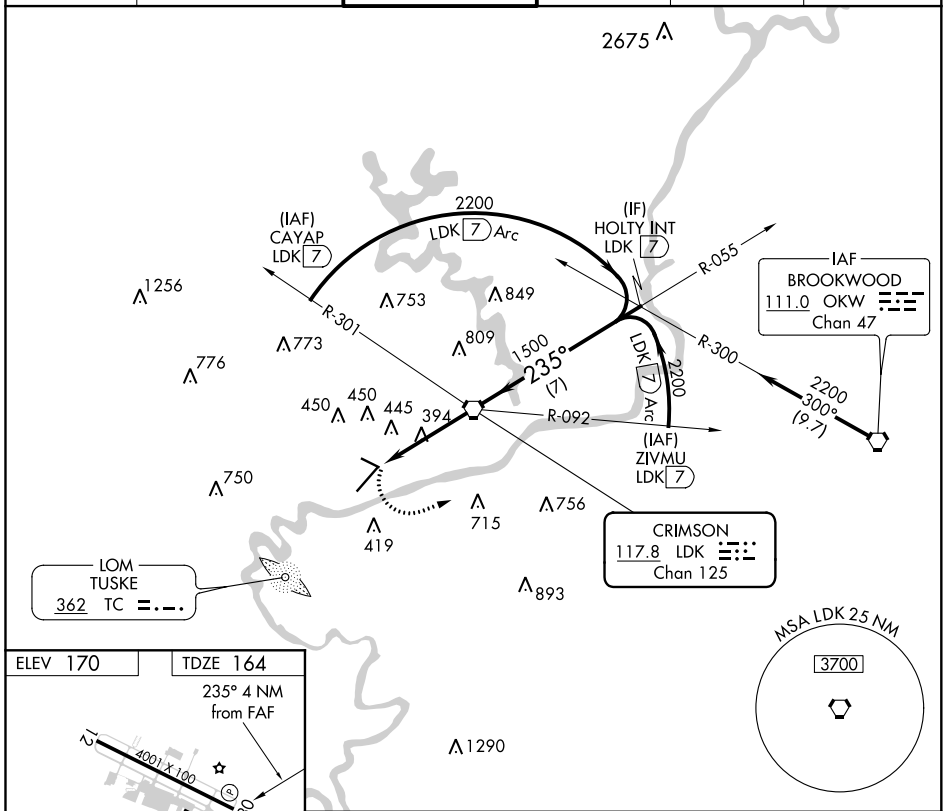
# VOR or TACAN RWY 22

TUSCALOOSA NATIONAL (TCL)

**∇** Circling to Rwy 12 and Rwy 30 NA at night.  
Helicopter visibility reduction below 3/4 SM NA.

MISSED APPROACH: Climbing left turn to 2500 direct OKW VORTAC.

ASOS <b>132.825</b>	BIRMINGHAM APP CON <b>120.15 269.25</b>	TUSCALOOSA TOWER ★ <b>126.3</b> (CTAF) <b>0 256.7</b>	GND CON <b>121.8 257.95</b>	CLNC DEL <b>120.775</b>	UNICOM <b>122.95</b>
------------------------	--	--	--------------------------------	----------------------------	-------------------------



FAF to MAP 4 NM					
Knots	60	90	120	150	180
Min:Sec	4:00	2:40	2:00	1:36	1:20

CATEGORY	A	B	C	D
S-22	700-1	536 (600-1)	700-1½ 536 (600-1½)	700-1¾ 536 (600-1¾)
CIRCLING	800-1	630 (700-1)	800-1¾ 630 (700-1¾)	800-2 630 (700-2)

SE-4, 25 FEB 2021 to 25 MAR 2021

SE-4, 25 FEB 2021 to 25 MAR 2021