

WAAS CH 81918 W22A	APP CRS 221°	Rwy Idg TDZE 164 Apt Elev 170	6499
--	------------------------	---	-------------

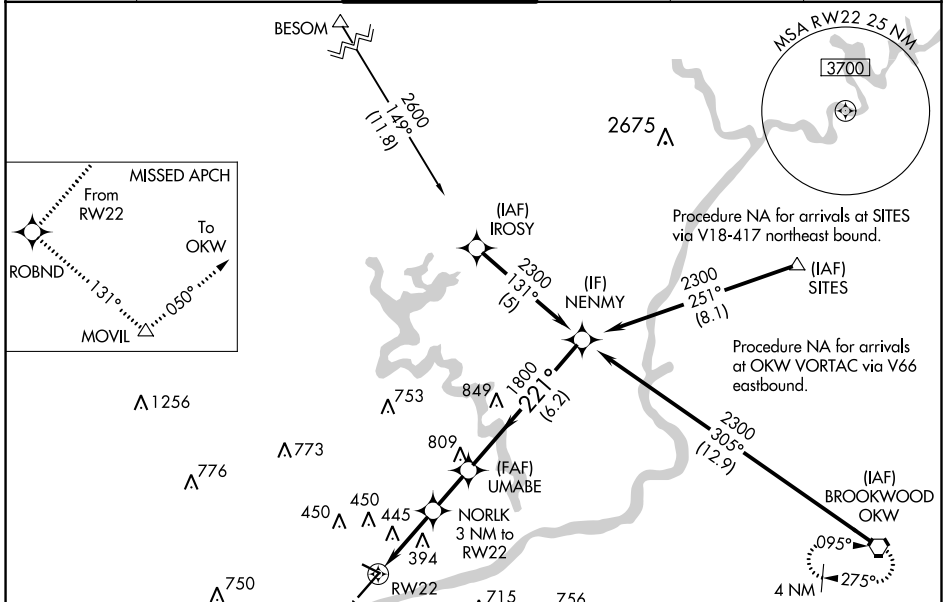
RNAV (GPS) RWY 22

TUSCALOOSA NATIONAL (TCL)

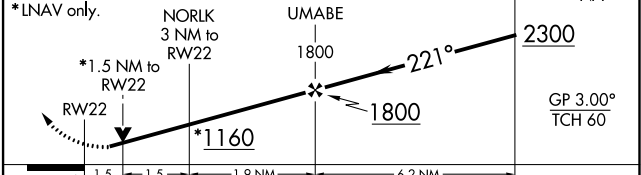
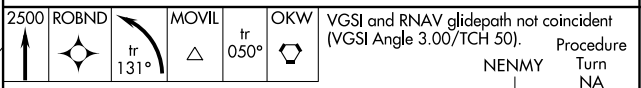
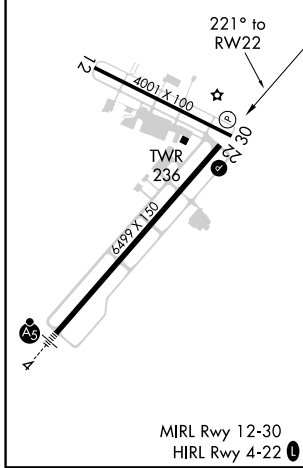
⚠ For uncompensated Baro-VNAV systems, LNAV/VNAV NA below -15°C (5°F) or above 48°C (118°F). DME/DME RNP-0.3 NA. Helicopter visibility reduction below 3/4 SM NA. When local altimeter setting not received, use Birmingham altimeter setting and increase all DA/MDA 180 feet, increase LPV all Cats visibility 1/2 mile, LNAV/VNAV visibility 3/4 mile, LNAV Cat C and D visibility 1/2 mile, Circling Cat B visibility 1/4 mile, Cat C and D visibility 1/2 mile. Baro-VNAV and VDP NA when using Birmingham altimeter setting. Night landing: Rwy 12, 30 NA.

MISSED APPROACH: Climb to 2500 direct ROBND and left turn on track 131° to MOVIL and on 050° track to OKW VORTAC and hold.

ASOS 132.825	BIRMINGHAM APP CON 120.15 269.25	TUSCALOOSA TOWER ★ 126.3 (CTAF) 0 256.7	GND CON 121.8 257.95	CLNC DEL 120.775	UNICOM 122.95
------------------------	--	---	--------------------------------	----------------------------	-------------------------



ELEV 170	TDZE 164
----------	----------



CATEGORY	A	B	C	D
LPV DA		582-1½	418 (500-1½)	
LNAV/VNAV DA		759-2	595 (600-2)	
LNAV MDA	700-1	536 (600-1)	700-1½ 536 (600-1½)	700-1¾ 536 (600-1¾)
CIRCLING	720-1 550 (600-1)	800-1 630 (700-1)	800-1¾ 630 (700-1¾)	800-2 630 (700-2)

SE-4, 25 FEB 2021 to 25 MAR 2021

SE-4, 25 FEB 2021 to 25 MAR 2021