

LOC I-TCL <b>109.1</b>	APP CRS <b>041°</b>	Rwy Idg <b>6499</b>
		TDZE <b>159</b>
		Apt Elev <b>170</b>

# ILS or LOC RWY 4

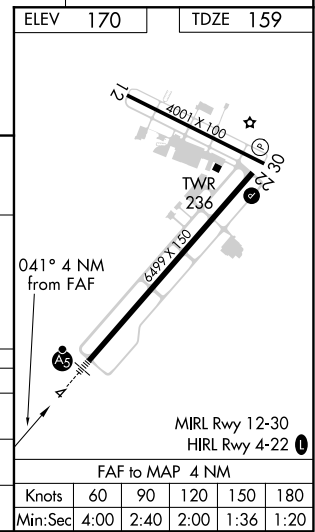
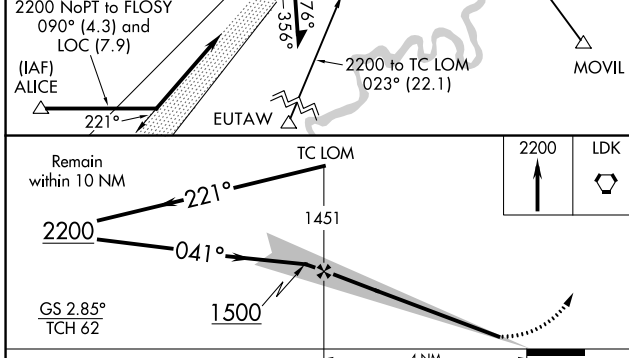
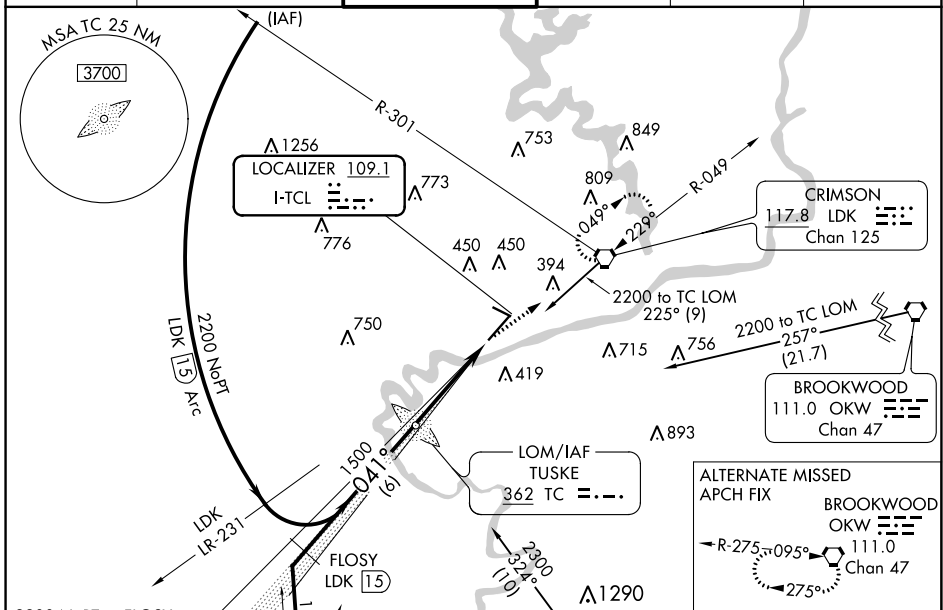
TUSCALOOSA NATIONAL (TCL)

**⚠** When local altimeter setting not received, use Birmingham altimeter setting and increase all DA/MDA 180 feet and increase S-ILS 4 visibility ¼ mile and S-LOC 4 Cats C/D and Circling Cats C/D visibility ½ mile. For inop MALSRR when using local altimeter setting, increase S-LOC 4 Cat C/D visibility to 1 mile. Night landing: Rwy 12, 30 NA.



**MISSED APPROACH:** Climb to 2200 direct LDK VORTAC and hold.

ASOS <b>132.825</b>	BIRMINGHAM APP CON <b>120.15 269.25</b>	TUSCALOOSA TOWER ★ <b>126.3</b> (CTAF) <b>0 256.7</b>	GND CON <b>121.8 257.95</b>	CLNC DEL <b>120.775</b>	UNICOM <b>122.95</b>
------------------------	--	--	--------------------------------	----------------------------	-------------------------



CATEGORY	A	B	C	D
S-ILS 4	359-½		200 (200-½)	
S-LOC 4	520-½	361 (400-½)	520-⅝	361 (400-⅝)
CIRCLING	800-1	630 (700-1)	800-1¼ 630 (700-1¼)	800-2 630 (700-2)

Knots				
60	90	120	150	180
Min:Sec				
4:00	2:40	2:00	1:36	1:20

SE-4, 25 FEB 2021 to 25 MAR 2021

SE-4, 25 FEB 2021 to 25 MAR 2021