

APP CRS 179°	Rwy Idg 4001
	TDZE 620
	Apt Elev 622

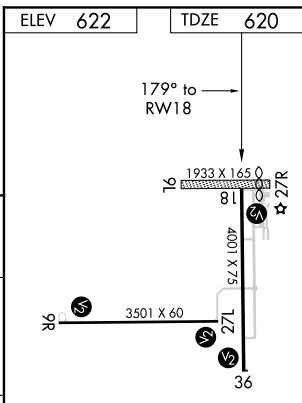
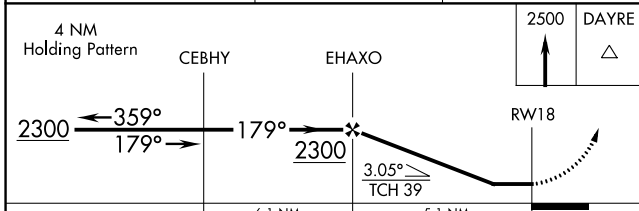
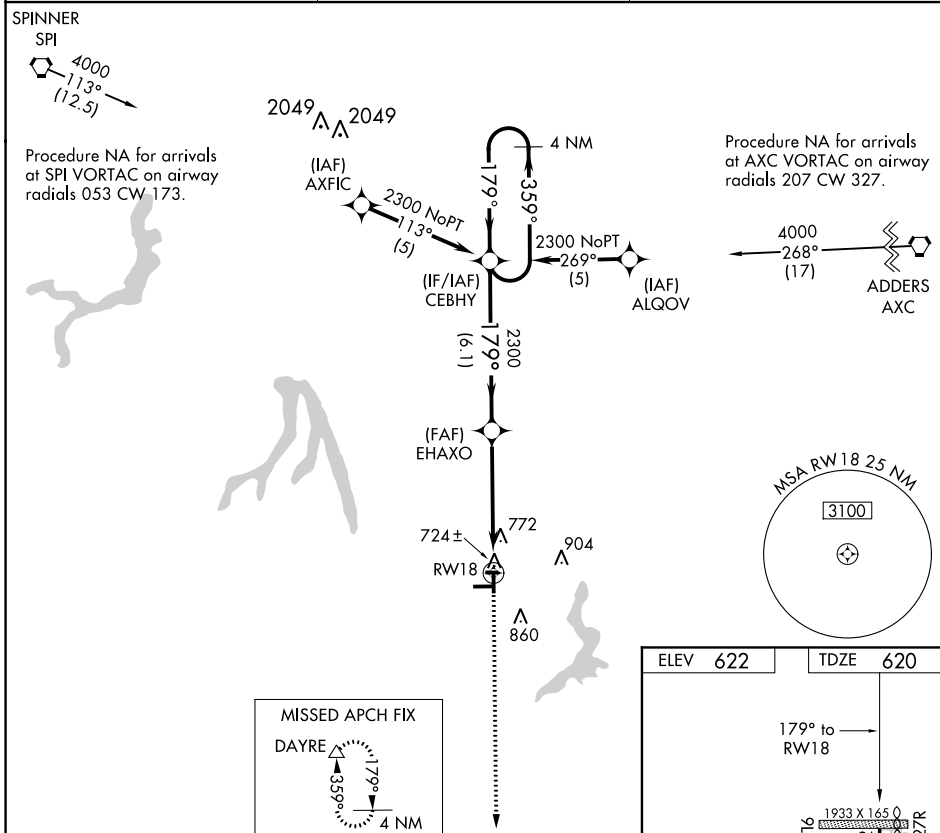
RNAV (GPS) RWY 18

TAYLORVILLE MUNI (TAZ)

⚠ DME/DME RNP-0.3 NA. Visibility reduction by helicopters NA. When local altimeter setting not received, use Springfield altimeter setting and increase all MDA 80 feet, LNAV Cat C visibility ¼ mile and Circling Cat C visibility ½ mile.

⚠ MISSED APPROACH: Climb to 2500 direct DAYRE and hold.

AWOS-3 123.875 395.0	SPRINGFIELD APP CON ★ 126.15 323.0	UNICOM 122.8 (CTAF) 0
--------------------------------	--	---------------------------------



CATEGORY	A	B	C	D
LNAV MDA	1080-1	460 (500-1)	1080-1¼ 460 (500-1¼)	NA
CIRCLING	1160-1	538 (600-1)	1160-1½ 538 (600-1½)	NA

REIL Rwy 9R, 27L and 18 0

MIRL Rwy 9R-27L and 18-36 0

EC-3, 25 FEB 2021 to 25 MAR 2021

EC-3, 25 FEB 2021 to 25 MAR 2021