

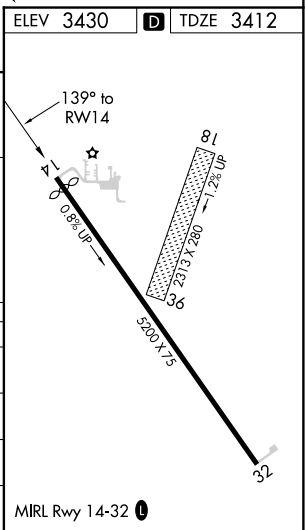
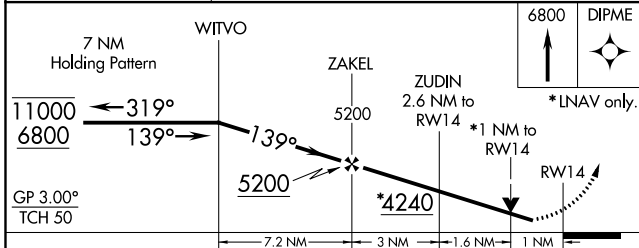
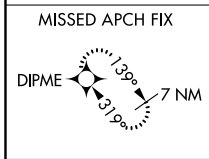
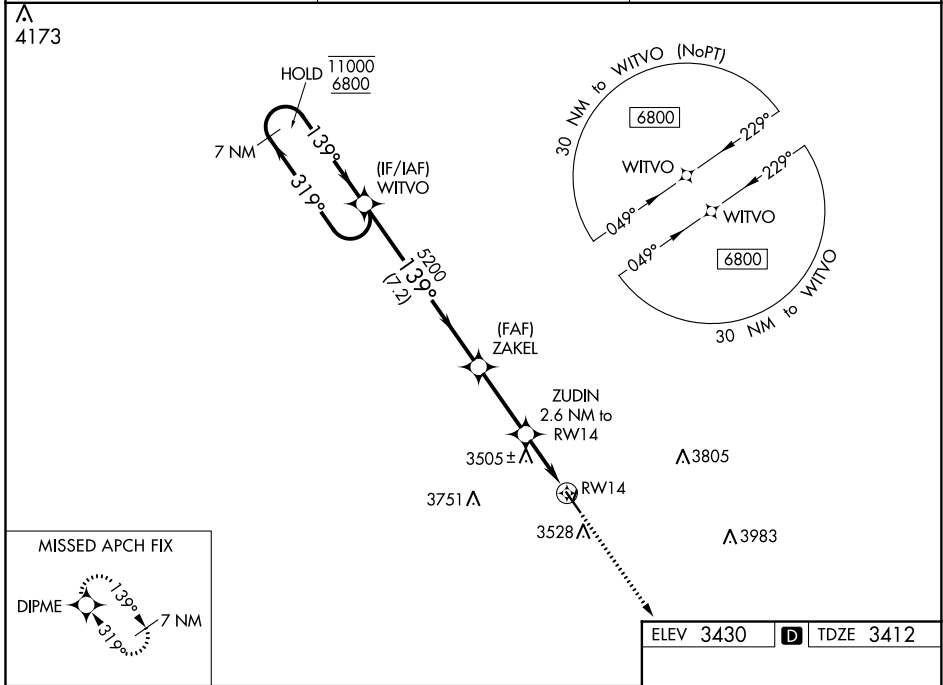
WAAS CH 77942 W14A	APP CRS 139°	Rwy Idg TDZE Apt Elev	5000 3412 3430
--	------------------------	-----------------------------	---

RNAV (GPS) RWY 14

CHEYENNE COUNTY MUNI (SYF)

RNP APCH.	MISSED APPROACH: Climb to 6800 direct DIPME and hold, continue climb-in-hold to 6800.
-----------	---

AWOS-3 118,925	DENVER CENTER 132.7 226,675	UNICOM 122.8 (CTAF) ①
--------------------------	---------------------------------------	---------------------------------



	A	B	C	D
LPV DA	3662-1	250 (300-1)		NA
LNAV/VNAV DA	3662-1	250 (300-1)		NA
LNAV MDA	3760-1	348 (400-1)		NA
C CIRCLING	3860-1 430 (500-1)	3880-1 450 (500-1)	3900-1½ 470 (500-1½)	NA

NC-2, 25 FEB 2021 to 25 MAR 2021

NC-2, 25 FEB 2021 to 25 MAR 2021