

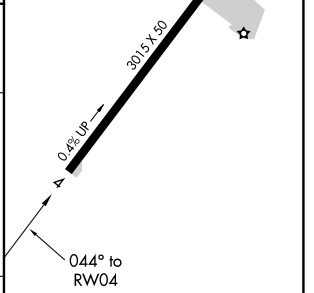
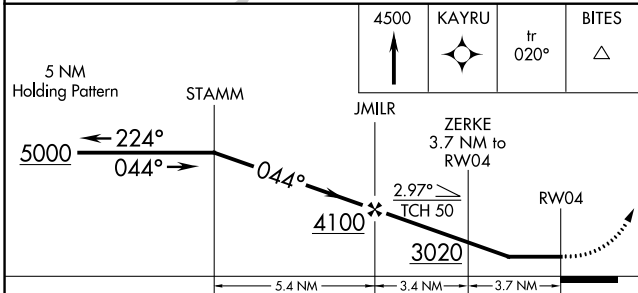
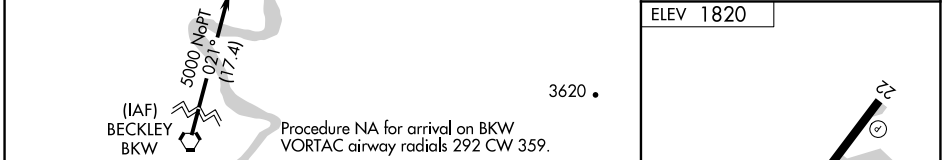
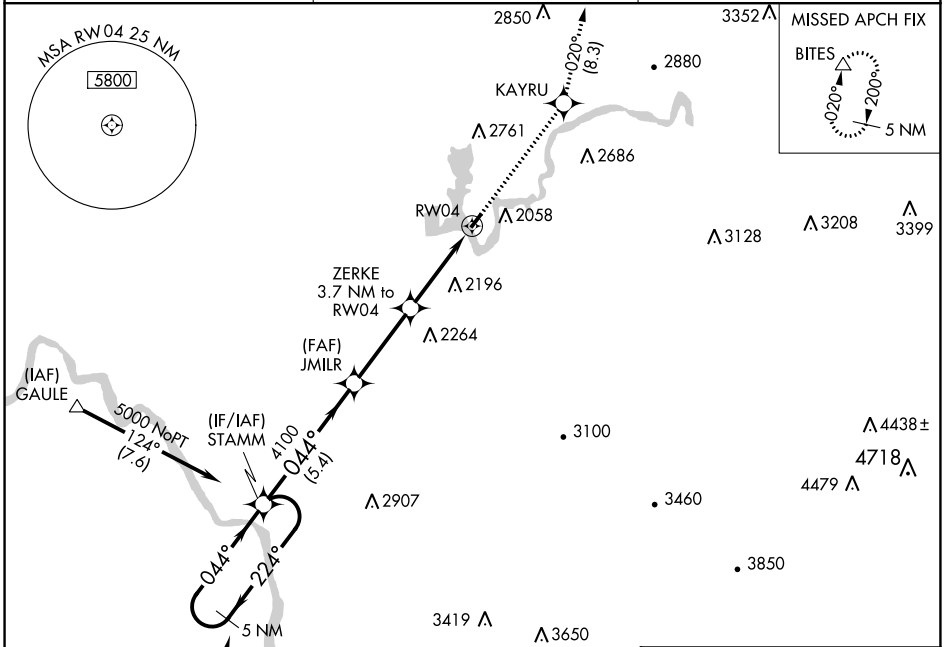
APP CRS 044°	Rwy Idg NA
	TDZE NA
	Apt Elev 1820

RNAV (GPS)-A

SUMMERSVILLE (SXL)

NA Rwy 4, 22 helicopter visibility reduction below 1 SM NA. DME/DME RNP-0.3 NA. Procedure NA at night. Use Charleston altimeter setting.	MISSED APPROACH: Climb to 4500 direct KAYRU and on track 020° to BITES and hold.
--	--

CRW ASOS 127.6	CHARLESTON APP CON 119.2 269.125	UNICOM 122.8 (CTAF)
--------------------------	--	-------------------------------



CATEGORY	A	B	C	D
CIRCLING	2640-1¼ 820 (900-1¼)	3020-1½ 1200 (1300-1½)	NA	

NE-4, 25 FEB 2021 to 25 MAR 2021

NE-4, 25 FEB 2021 to 25 MAR 2021