

WAAS CH 42625 W17A	APP CRS 166°	Rwy Idg TDZE Apt Elev	5840 2364 2380
--	------------------------	-----------------------------	---

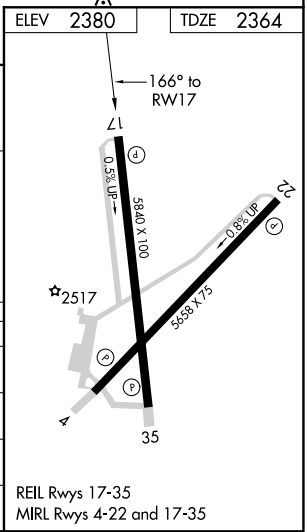
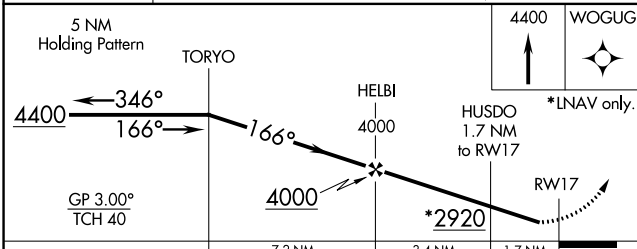
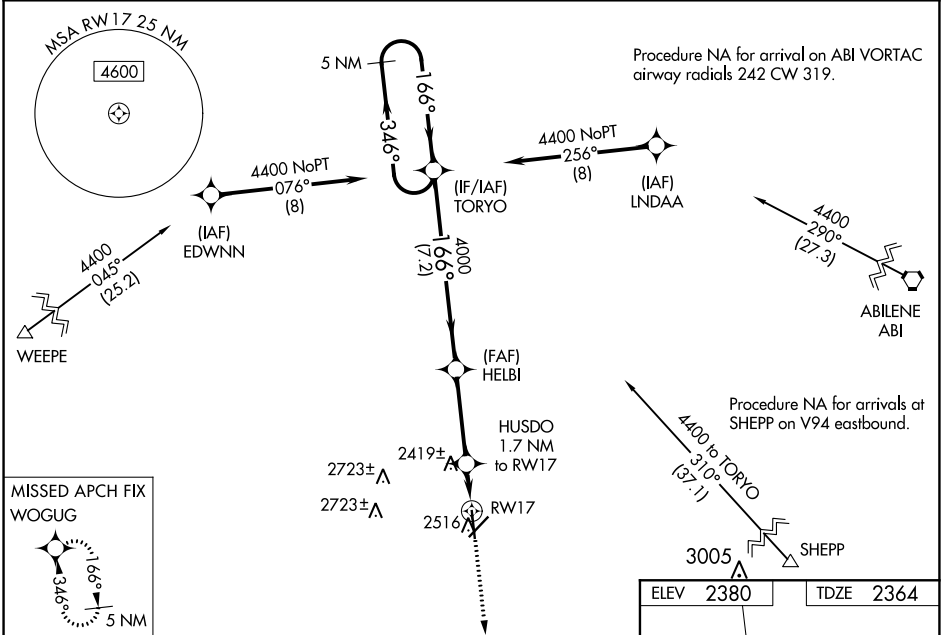
RNAV (GPS) RWY 17

AVENGER FIELD (SWW)

⚠ When VGSI inop, Circling Rwy 22 NA at night. Baro-VNAV NA when using Snyder altimeter setting. For uncompensated Baro-VNAV systems, LNAV/VNAV NA below -19°C (-2°F) or above 29°C (84°F). When VGSI inop, Straight-in/Circling Rwy 17 procedure NA at night. DME/DME RNP-0.3 NA. Visibility reduction by helicopters NA. When local altimeter setting not received, use Snyder altimeter setting and increase all DA 72 feet and all MDA 80 feet. Increase LPV, LNAV/VNAV all Cats and LNAV Cats C and D visibility 1/8 mile.

MISSED APPROACH: Climb to 4400 direct WOGUG and hold.

AWOS-3 119.025	ABILENE APP CON 127.2 282.3	UNICOM 122.8 (CTAF)
--------------------------	---------------------------------------	-------------------------------



CATEGORY	A	B	C	D
LPV DA		2614-1	250 (300-1)	
LNAV/VNAV DA		2619-1	255 (300-1)	
LNAV MDA		2680-1	316 (300-1)	
CIRCLING	2880-1	500 (500-1)	2880-1½ 500 (500-1½)	2940-2 560 (600-2)

SC-2, 25 FEB 2021 to 25 MAR 2021

SC-2, 25 FEB 2021 to 25 MAR 2021