

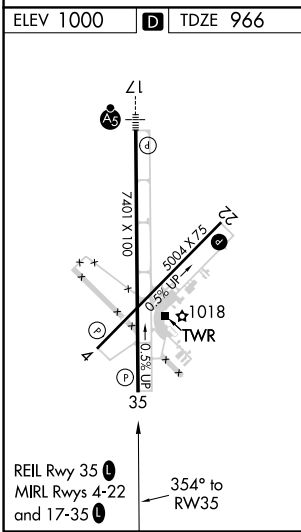
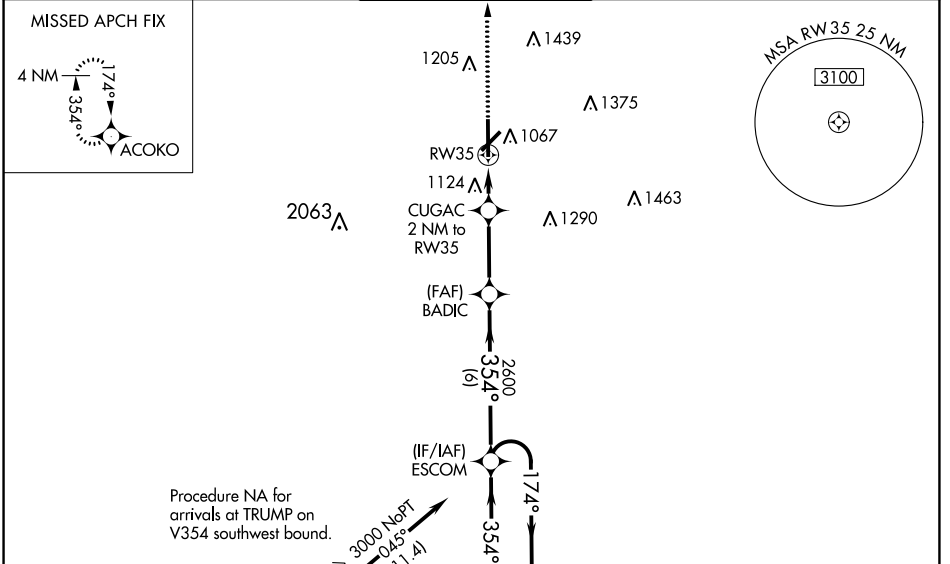
WAAS CH 42633 W35A	APP CRS 354°	Rwy Idg TDZE Apt Elev	7401 966 1000
---------------------------------	------------------------	-----------------------------	--

RNAV (GPS) RWY 35

STILLWATER RGNL (SWO)

RNP APCH.	<p>⚠ Baro-VNAV NA when using Ponca City Rgnl altimeter setting. For uncompensated Baro-VNAV systems, LNAV/VNAV NA below -16°C (4°F) or above 54°C (130°F). VDP NA with Ponca City Rgnl altimeter setting. When local altimeter setting not received, use Ponca City Rgnl altimeter setting and increase all DA/MDA 80 feet and increase LPV all Cats visibility 1/8 mile, increase LNAV/VNAV all Cats visibility 1/4 mile, LNAV Cats C/D visibility 1/4 mile, Circling Cat D visibility 1/2 mile.</p>	MISSED APPROACH: Climb to 3000 direct ACOKO and hold.
-----------	--	--

ASOS 135.725	KANSAS CITY CENTER 127.8 319.1	STILLWATER TOWER ★ 125.35 (CTAF) 0	GND CON 121.6	UNICOM 122.95
------------------------	--	--	-------------------------	-------------------------



ELEV 1000	D	TDZE 966		
<p>REIL Rwy 35 MIRL Rwy 4-22 and 17-35</p> <p>354° to RWY 35</p>	<p>3500</p> <p>7401 X 100</p> <p>500 X 75</p> <p>0.5% UP</p> <p>0.5% UP</p> <p>1018</p> <p>TWR</p>	<p>Procedure NA for arrivals at TRUMP on V354 southwest bound.</p> <p>3000 NoPT (11.4)</p> <p>(IAF) TRUMP</p> <p>3000 NoPT 333° (13.6)</p> <p>(IAF) TOTES</p> <p>Procedure NA for arrivals at TOTES on V14 southwest bound.</p> <p>3000 ACOKO</p> <p>VGS1 and RNAV glidepath not coincident (VGS1 Angle 3.00/TCH 26).</p> <p>4 NM Holding Pattern</p> <p>*LNAV only.</p> <p>+1.2 NM to RWY 35</p> <p>+1640</p> <p>2600</p> <p>354°</p> <p>174°</p> <p>3000</p> <p>GP 3.00° TCH 40</p>		
CATEGORY	A	B	C	D
LPV DA		1166-3/4	200 (200-3/4)	
LNAV/VNAV DA		1256-1	290 (300-1)	
LNAV MDA	1380-1	414 (400-1)	1380-1 1/8	414 (400-1 1/8)
CIRCLING	1420-1 420 (500-1)	1460-1 460 (500-1)	1520-1 1/2 520 (600-1 1/2)	1740-2 1/4 740 (800-2 1/4)

SC-1, 25 FEB 2021 to 25 MAR 2021

SC-1, 25 FEB 2021 to 25 MAR 2021