

WAAS CH 90108 W17A	APP CRS 174°	Rwy Idg 7401 TDZE 1000 Apt Elev 1000
--	------------------------	---

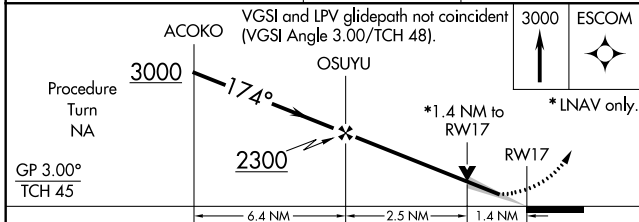
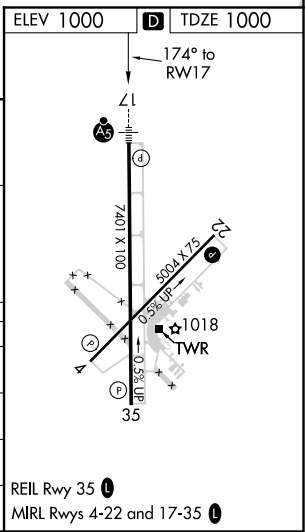
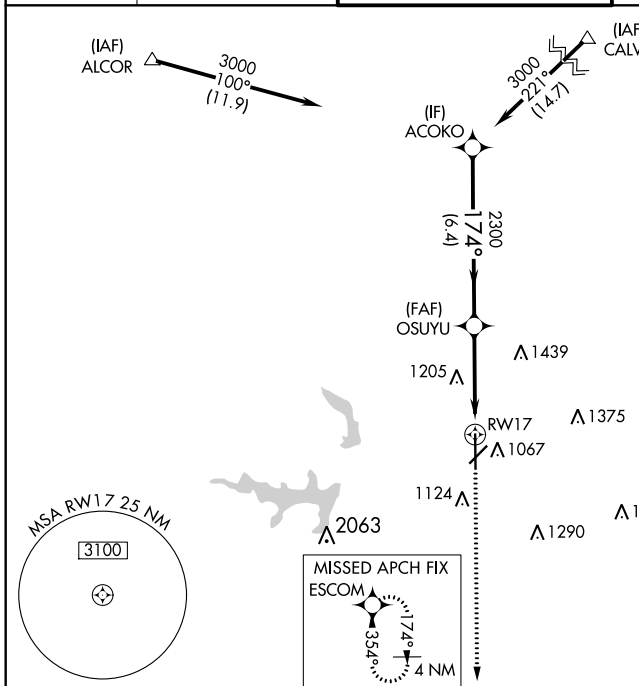
RNAV (GPS) RWY 17

STILLWATER RGNL (SWO)

⚠ When local altimeter setting not received, use Ponca City Rgnl altimeter setting, increase all DA/MDA 80 feet, increase LPV visibility ½ mile all Cats, LNAV/VNAV visibility ¼ mile all Cats, LNAV Cats C/D visibility ¼ mile and Circling Cat D visibility ½ mile. VDP and Baro-VNAV NA when using Ponca City Rgnl altimeter setting. Baro-VNAV NA below -17°C (2°F). DME/DME RNP-0.3 NA. For inop MALS, when using Ponca City Rgnl altimeter setting, increase LPV all Cats visibility to 1¼ mile; LNAV/VNAV visibility all Cats to 1¼ mile.

MALS MISSED APPROACH: Climb to 3000 direct ESCOM WP and hold.

ASOS 135.725	KANSAS CITY CENTER 127.8 319.1	STILLWATER TOWER ★ 125.35 (CTAF) 0	GND CON 121.6	UNICOM 122.95
------------------------	--	---	-------------------------	-------------------------



CATEGORY	A	B	C	D
LPV DA		1250-½	250 (300-½)	
LNAV/VNAV DA		1420-1	420 (500-1)	
LNAV MDA	1480-½	480 (500-½)	1480-¾ 480 (500-¾)	1480-1 480 (500-1)
C CIRCLING	1480-1	480 (500-1)	1520-2 520 (600-2)	1740-2¼ 740 (800-2¼)

REIL Rwy 35 **0**
MRL Rwys 4-22 and 17-35 **0**

SC-1, 25 FEB 2021 to 25 MAR 2021

SC-1, 25 FEB 2021 to 25 MAR 2021