


LOC/DME I-SWO 109.15 Chan 28 (Y)	APP CRS 174°	Rwy Idg 7401 TDZE 1000 Apt Elev 1000
--	------------------------	---

ILS or LOC RWY 17

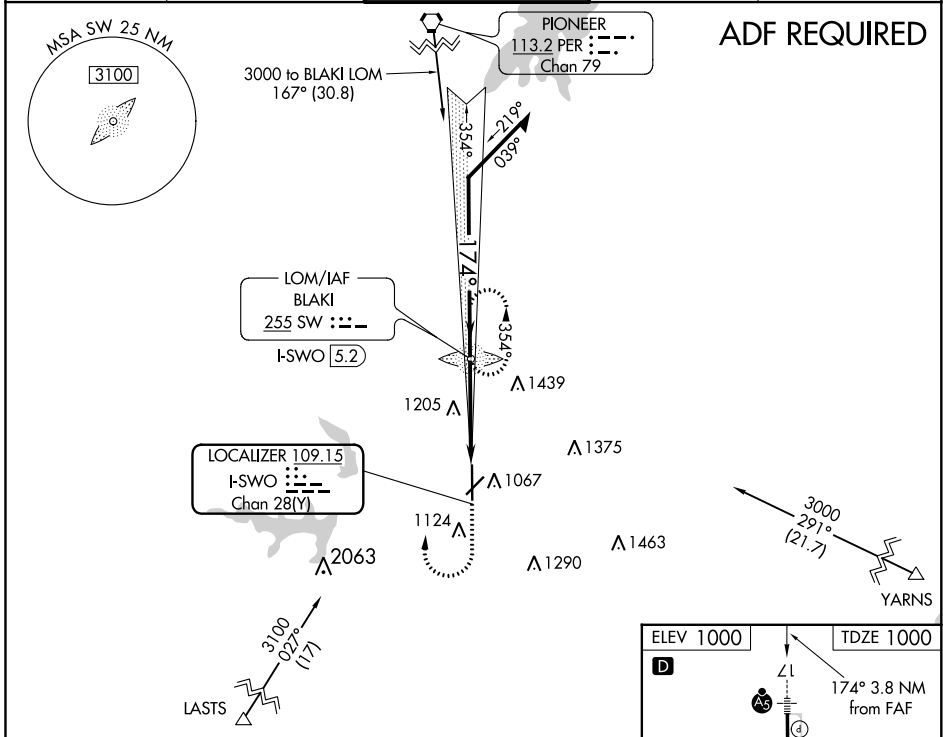
STILLWATER RGNL (SWO)

⚠ When local altimeter setting not received, use Ponca City Rgnl altimeter setting and increase all DA/MDA 80 feet; increase S-LOC 17 Cats C/D visibility ¼ mile; increase Circling Cat D visibility ½ mile. For inoperative MALSR when using Ponca City Rgnl altimeter setting, increase S-ILS 17 all Cats visibility to 1 mile. VDF NA with Ponca City Rgnl altimeter setting.

MALSR


MISSED APPROACH:
Climb to 1500 then climbing right turn to 3200 direct BLAKI LOM and hold.

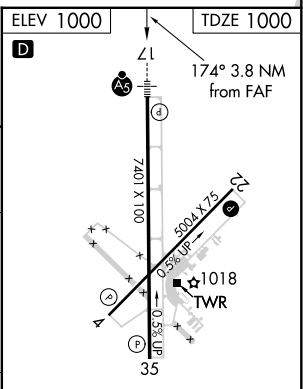
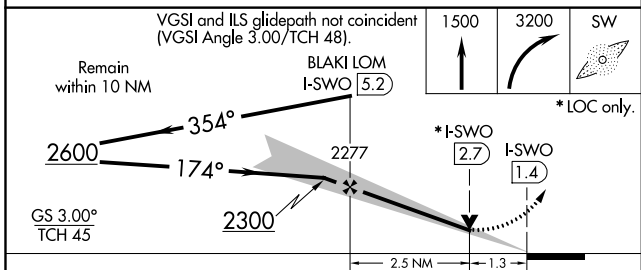
ASOS 135.725	KANSAS CITY CENTER 127.8 319.1	STILLWATER TOWER ★ 125.35 (CTAF) 0	GND CON 121.6	UNICOM 122.95
------------------------	--	--	-------------------------	-------------------------



ADF REQUIRED

SC-1, 25 FEB 2021 to 25 MAR 2021

SC-1, 25 FEB 2021 to 25 MAR 2021



CATEGORY	A	B	C	D
S-ILS 17	1 200-½ 200 (200-½)			
S-LOC 17	1 460-½ 460 (500-½)	1 460-¾ 460 (500-¾)	1 460-1 460 (500-1)	
C CIRCLING	1 460-1 460 (500-1)	1 520-1½ 520 (600-1½)	1 740-2¼ 740 (800-2¼)	

REIL Rwy 35 **0**

MIRL Rwy 4-22 and 17-35 **0**

FAF to MAP 3.8 NM

Knots	60	90	120	150	180
Min:Sec	3:48	2:32	1:54	1:31	1:16