

RNAV (GPS) RWY 21L

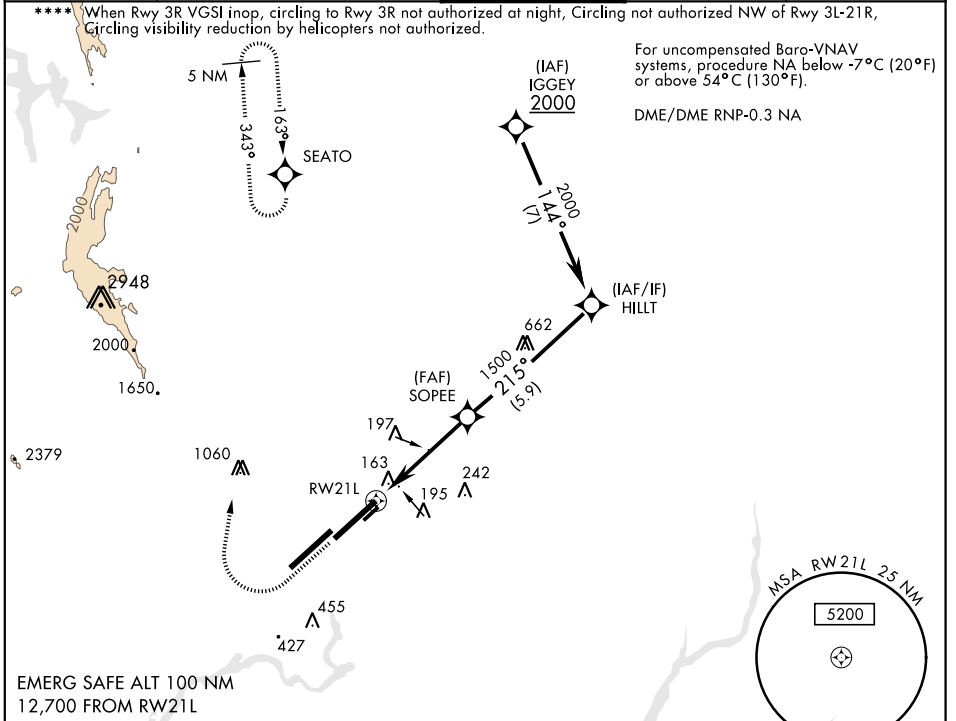
WAAS CH 71274 W21A	APCH CRS 215°	Rwy ldg 10,995 TDZE 58 Arprt Elev 63
--	-------------------------	---

AL-488 [USAF]

TRAVIS AFB (KSUU)

<p>▼ * When ALS inop increase all CAT RVR to 40, vis to ¾ mile. ** When ALS inop increase all CAT vis to 1 ½ mile. *** When ALS inop, increase CAT AB RVR to 55, vis to 1 mile, CAT CDE vis to 1 ½ miles.</p>	<p>ALSIF-2 </p>	<p>MISSED APPROACH: Climb to 2200 then climbing right turn to 4400 direct SEATO and hold, continue climb-in-hold to 4400.</p>
---	----------------------	---

<p>ATIS 135.55 292.125</p>	<p>TRAVIS APP CON 119.9(S) 126.6(N) 281.45</p>	<p>TRAVIS TOWER 120.75 254.4</p>	<p>GND CON 121.8 289.4</p>	<p>CLNC DEL 127.55 335.8</p>
---------------------------------------	---	---	---------------------------------------	---



ELEV 63	TDZE 58
---------	---------

	<p>2200 4400 SEATO †LNAV only HILLT 2000</p>					
	<p>↑1.3 NM to RWY 21L SOPEE 215° 1500</p>					
	<p>4.6 NM</p>					
	<p>CATEGORY</p>	A	B	C	D	E
	<p>LPV DA * **</p>	258/18		200	(200-½)	
<p>LNAV/VNAV DA **</p>	502/60		444	(500-1½)		
<p>LNAV MDA ***</p>	500/24 442 (500-½)		500/45		442 (500-¾)	
<p>****</p>	540-1	580-1	1100-3		1200-3	
<p>☉ CIRCLING</p>	477 (500-1)	517 (600-1)	1037(1100-3)		1137 (1200-3)	

RNAV (GPS) RWY 21L

SW-2, 25 FEB 2021 to 25 MAR 2021

SW-2, 25 FEB 2021 to 25 MAR 2021