

ILS RWY 21L (CAT II)

LOC I-SUU 110.1	APCH CRS 215°	Rwy Ldg 10,995
		TDZE 58
		Arprt Elev 63

AL-488 [USAF]

TRAVIS AFB (KSUU)

	† MISSED APPROACH: Climb to 5000 on SUU R-205 to SETSE. Then climbing right turn 020°, intercept SUU R-339 to SEATO and hold, continue climb and hold to 5000.			

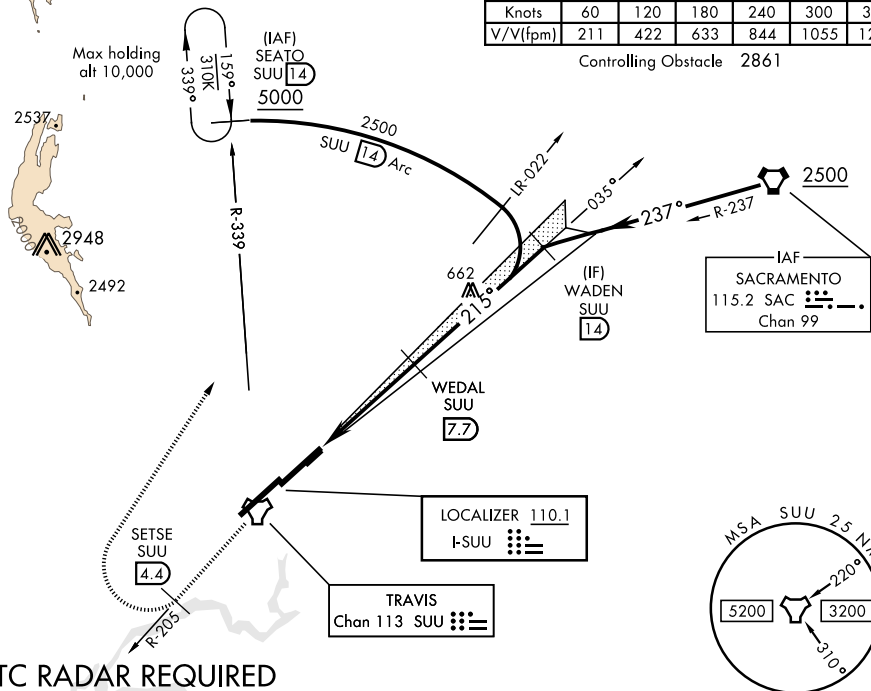
ATIS 135.55 292.125	TRAVIS APP CON 119.9(S) 126.6(N) 281.45	TRAVIS TOWER 120.75 254.4	GND CON 121.8 289.4	CLNC DEL 127.55 335.8
-------------------------------	---	-------------------------------------	-------------------------------	---------------------------------

CATEGORY II ILS SPECIAL AIRCREW & AIRCRAFT CERTIFICATION REQUIRED

† CAUTION: Missed Approach
Minimum Climb Rate to 3800

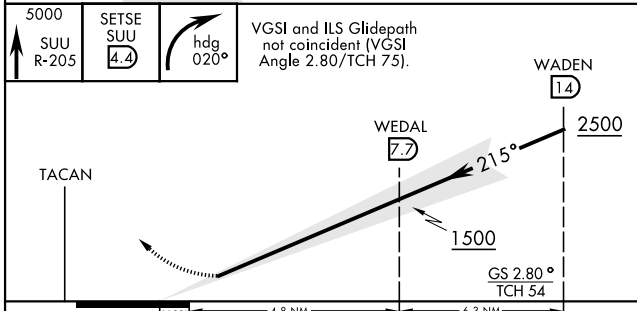
Knots	60	120	180	240	300	360
V/V(fpm)	211	422	633	844	1055	1266

Controlling Obstacle 2861

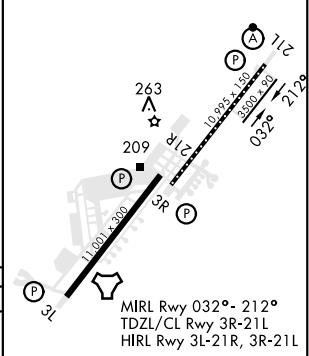


ATC RADAR REQUIRED

EMERG SAFE ALT 100 NM 12,600 FROM "SUU" TACAN



ELEV 63	TDZE 58
---------	---------



CATEGORY	A	B	C	D	E
S-ILS 21L	RA 83/12		100	DA 158	

ILS RWY 21L (CAT II)

SW-2, 25 FEB 2021 to 25 MAR 2021

SW-2, 25 FEB 2021 to 25 MAR 2021