

BESSA ONE DEPARTURE (RNAV) (BESSA1 • BESSA)

TRAVIS AFB (KSUU)
FAIRFIELD, CALIFORNIA

SL-488 [USAF]

Rwy	Knots	60	120	180	240	300	360
*3R (C) V/V(fpm)	201	402	603	804	1005	1206	
† 3R (C) V/V(fpm)	295	590	885	1180	1475	1770	
† 3L (C) V/V(fpm)	299	598	897	1196	1495	1794	
*21L/R(C) V/V(fpm)	220	440	660	880	1100	1320	
†21R (C) V/V(fpm)	277	554	831	1108	1385	1662	
† 21L (C) V/V(fpm)	280	560	840	1120	1400	1680	

* Minimum † ATC Climb Rate

(C) to 500

(C) to BESSA to 8000

(C) to 4000

DEPARTURE ROUTE DESCRIPTION

TAKE-OFF RWY 3L/R: Climb on heading 035° to 1500, then left turn direct to cross BESSA at or above 8000. Thence...

TAKE-OFF RWY 21L/R: Climb on heading 215° to 1500, then right turn direct to cross BESSA at or above 8000. Thence...

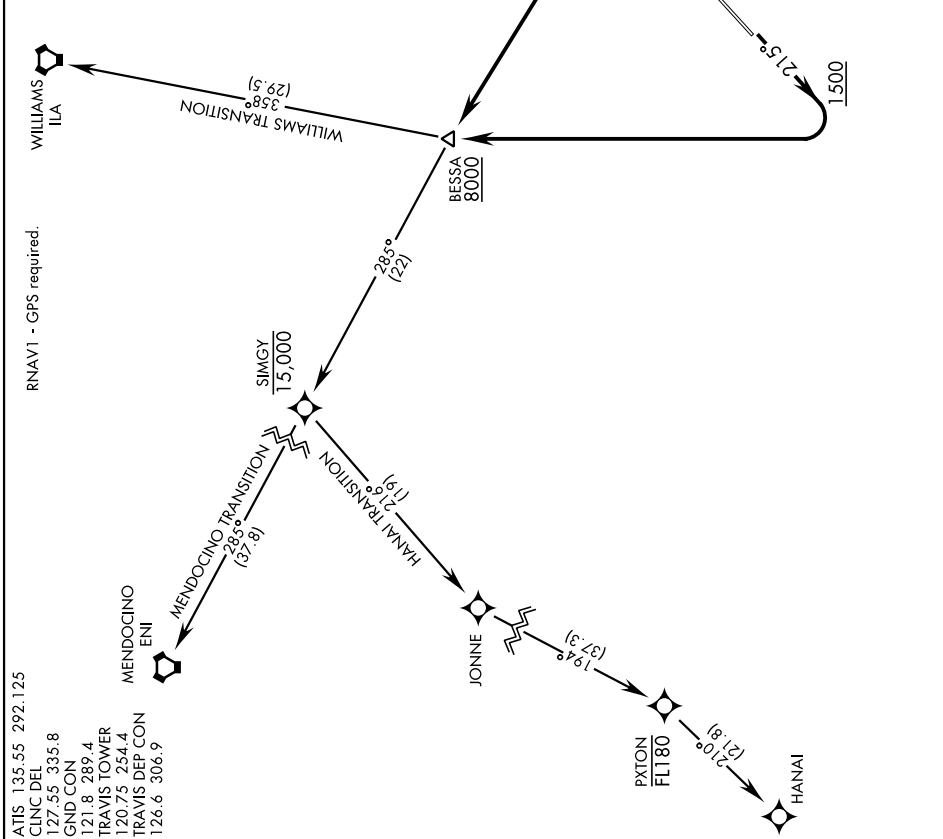
...via assigned transition. Maintain ATC assigned altitude.

HANAI TRANSITION (BESSA1.HANAI)

MENDOCINO TRANSITION (BESSA1.ENI)

WILLIAMS TRANSITION (BESSA1.ILA)

SW-2, 25 FEB 2021 to 25 MAR 2021



- ATIS 135.55 292.125
- CINC DEL 127.55 335.8
- GNDCON 121.8 289.4
- TRAVIS TOWER 120.75 254.4
- TRAVIS DEP CON 126.6 306.9

BESSA ONE DEPARTURE (RNAV) (BESSA1 • BESSA)

Orig 10SEP20

FAIRFIELD, CALIFORNIA
TRAVIS AFB (KSUU)

SW-2, 25 FEB 2021 to 25 MAR 2021