

WAAS CH 50123 W32A	APP CRS 326°	Rwy Idg TDZE Apt Elev	6109 704 705
--	------------------------	-----------------------------	---

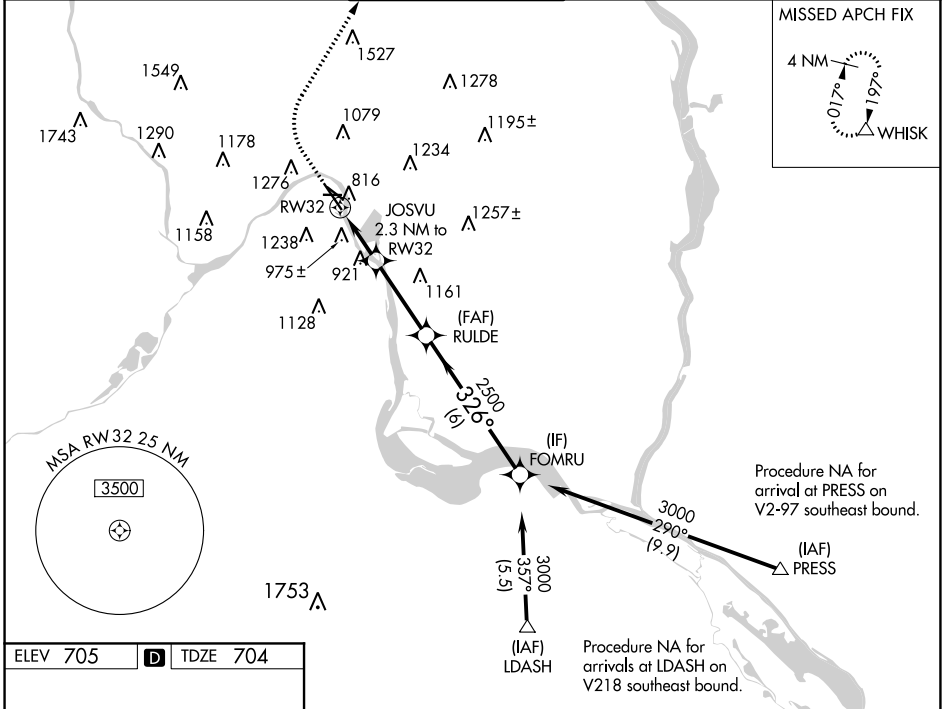
RNAV (GPS) RWY 32

ST PAUL DOWNTOWN HOLMAN FIELD (STP)

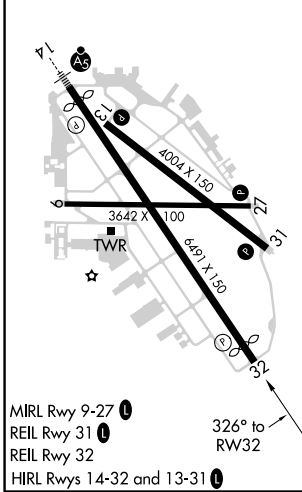
⚠ For uncompensated Baro-VNAV systems, LNAV/VNAV NA below -21°C (-5°F) or above 54°C (130°F). Rwy 32 helicopter visibility reduction below ¾ SM NA. DME/DME RNP-0.3 NA.

MISSED APPROACH: Climb to 1400 then climbing right turn to 3000 direct WHISK and hold.

ATIS 118,35	MINNEAPOLIS APP CON 121,2 335,65	ST. PAUL TOWER ★ 119,1(CTAF) 257,8	GND CON 121,675	CLNC DEL 121,675	UNICOM 122,95
-----------------------	--	--	---------------------------	----------------------------	-------------------------



ELEV 705	D	TDZE 704
----------	----------	----------



1400	3000	WHISK		
↑	↷	△		
* LNAV only.				
* 1.6 NM to RWY 32		JOSVU 2.3 NM to RWY 32	RULDE 2500	FOMRU 3000
1460*	2500	326°	GP 3.00° TCH 40	
1.6 NM	0.7 NM	3.2 NM	6 NM	
CATEGORY	A	B	C	D
LPV DA	1031/60		327 (400-1¼)	
LNAV/VNAV DA	1258-1⅞		554 (600-1⅞)	
LNAV MDA	1240/55	536 (600-1)	1240-1½	536 (600-1½)
C CIRCLING	1580-1¼	875 (900-1¼)	1580-2½	1580-2¾
			875 (900-2½)	875 (900-2¾)

NC-1, 25 FEB 2021 to 25 MAR 2021

NC-1, 25 FEB 2021 to 25 MAR 2021