

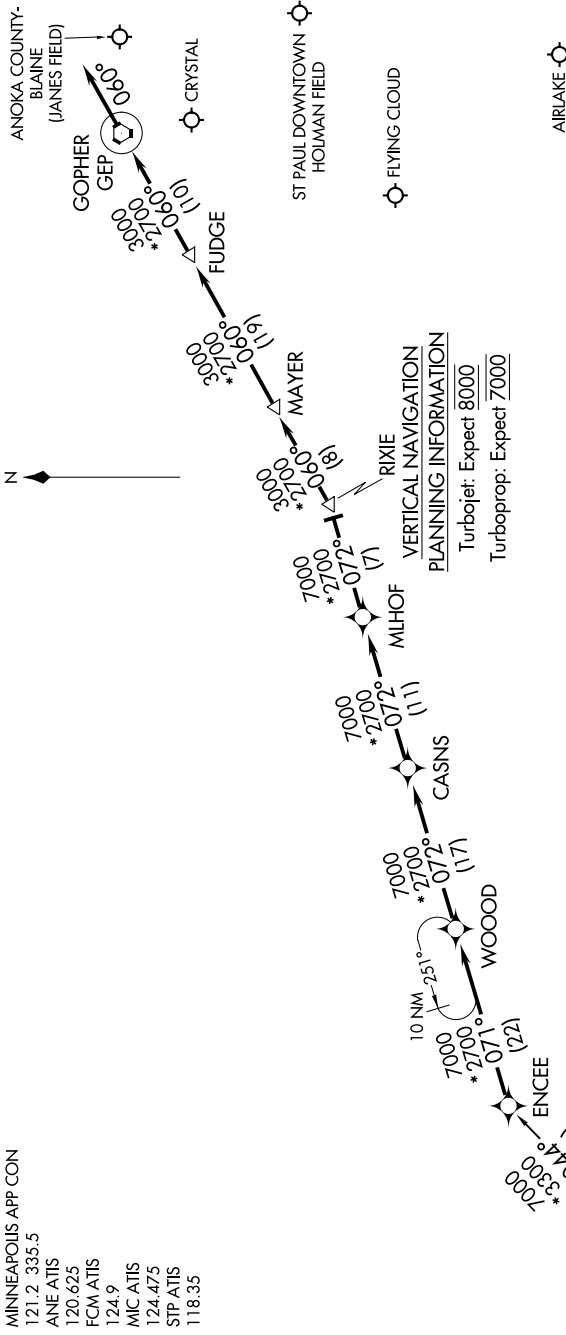
# ENCEE TWO ARRIVAL (RNAV)

AL-263 (FAA)

MINNEAPOLIS-ST PAUL, MINNESOTA

NC-1, 25 FEB 2021 to 25 MAR 2021

MINNEAPOLIS APP CON  
 121.2 335.5  
 ANE ATIS  
 120.625  
 FCM ATIS  
 124.9  
 MIC ATIS  
 124.475  
 STP ATIS  
 118.35



NOTE: GPS required.

NOTE: For use by /E, /F, /G, and /R (RNP-2.0) equipped aircraft only.

## ARRIVAL ROUTE DESCRIPTION

### SIoux FALLS TRANSITION (FSD.ENCEE2)

From over ENCEE as depicted to RIXIE, thence as depicted to GEP VORTAC.  
 Thence heading 060°, expect RADAR vectors to final approach course.

NOTE: Chart not to scale.

NC-1, 25 FEB 2021 to 25 MAR 2021

# ENCEE TWO ARRIVAL (RNAV)

MINNEAPOLIS-ST PAUL, MINNESOTA