

# WHRLI SIX DEPARTURE (RNAV)

AL-360 (FAA)

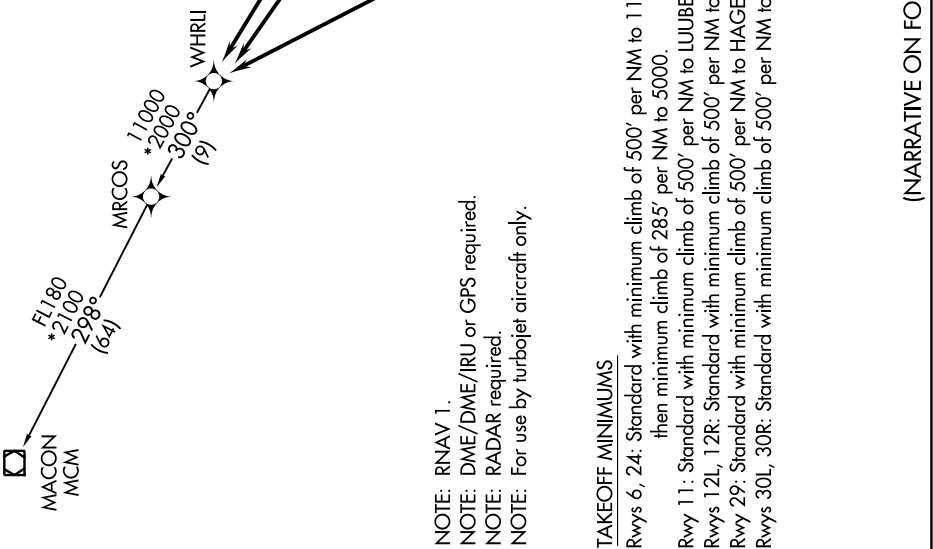
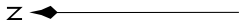
ST LOUIS LAMBERT INTL (STL)

ST. LOUIS, MISSOURI

NC-3, 25 FEB 2021 to 25 MAR 2021

**TOP ALTITUDE:  
5000**

D-ATIS 125.025 379.925  
 CLNC DEL 119.5 363.1  
 CPDLC  
 GND CON 121.9 348.6 (Inbound)  
 121.65 377.175 (Outbound)  
 118.925 227.125 (Rwy 11/29)  
 ST. LOUIS TOWER 120.05 284.6 (Rwys 12L/30R, 24)  
 118.5 257.7 (Rwy 12R/30L)  
 132.475 239.275 (Rwys 6, 11/29)  
 ST. LOUIS DEP CON 128.1 307.05



NOTE: Chart not to scale.

NOTE: RNAV 1.  
 NOTE: DME/DME/IRU or GPS required.  
 NOTE: RADAR required.  
 NOTE: For use by turbojet aircraft only.

**TAKEOFF MINIMUMS**  
 Rwy 6, 24: Standard with minimum climb of 500' per NM to 1120 then minimum climb of 285' per NM to 5000.  
 Rwy 11: Standard with minimum climb of 500' per NM to LUIBE.  
 Rwys 12L, 12R: Standard with minimum climb of 500' per NM to HEFNR.  
 Rwy 29: Standard with minimum climb of 500' per NM to HAGEE.  
 Rwys 30L, 30R: Standard with minimum climb of 500' per NM to PYUNG.

(NARRATIVE ON FOLLOWING PAGE)

NC-3, 25 FEB 2021 to 25 MAR 2021

# WHRLI SIX DEPARTURE (RNAV)

(WHRLI6.WHRLI) 19JUL18

ST. LOUIS, MISSOURI  
ST LOUIS LAMBERT INTL (STL)