


| | | |
|-------------|----------|-------------|
| APP CRS | Rwy Idg | 9003 |
| 303° | TDZE | 605 |
| | Apt Elev | 618 |

RNAV (RNP) Z RWY 30R

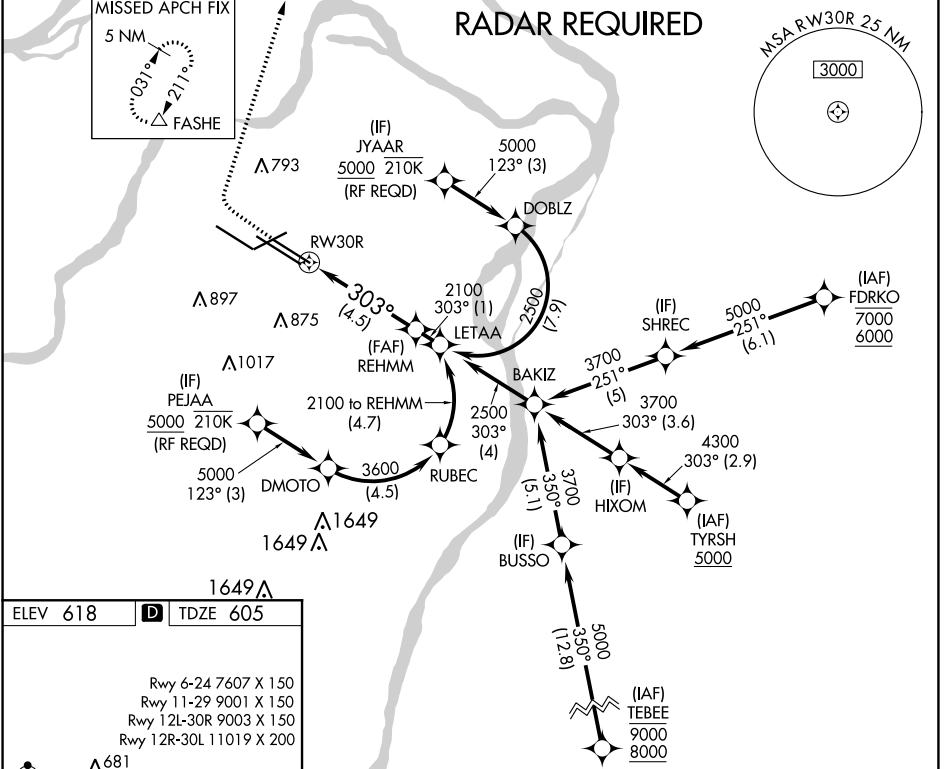
ST LOUIS LAMBERT INTL (STL)

▼ For uncompensated Baro-VNAV systems, procedure NA below -16°C (4°F) or above 54°C (130°F). GPS required. Simultaneous approach authorized with Rwy 29, except for arrivals at JYAAR and PEJAA. Use of FD or AP required during simultaneous operations. For inop ALS, increase RNP 0.30 all Cats visibility to RVR 6000.

ALSF-2 

MISSED APPROACH: Climb to 1100 then climbing right turn to 3000 direct FASHE and hold.

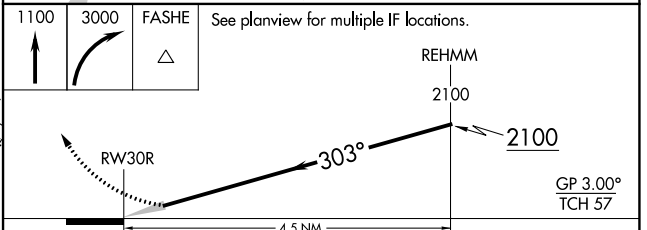
| | | | | | |
|--|---|--|---|--------------------------------|-------|
| D-ATIS 125.025 379.925 | ST. LOUIS APP CON 132.125 360.6 | ST. LOUIS TOWER 120.05 284.6 | GND CON 121.9 348.6 (Inbound) 121.65 377.175 (Outbound) 118.925 227.125 (Rwy 11/29) | CLNC DEL 119.5 363.1 | CPDLC |
|--|---|--|---|--------------------------------|-------|



| | | |
|----------|----------|----------|
| ELEV 618 | D | TDZE 605 |
|----------|----------|----------|

Rwy 6-24 7607 X 150
Rwy 11-29 9001 X 150
Rwy 12L-30R 9003 X 150
Rwy 12R-30L 11019 X 200

HIRL all Rwys
TDZ/CL Rwys 11, 12L, 12R, 29, and 30R



| | | | | |
|-------------|--------|---|-------------|---|
| CATEGORY | A | B | C | D |
| RNP 0.30 DA | 969/40 | | 364 (400-¾) | |

AUTHORIZATION REQUIRED

NC-3, 25 FEB 2021 to 25 MAR 2021

NC-3, 25 FEB 2021 to 25 MAR 2021