

|             |          |             |
|-------------|----------|-------------|
| APP CRS     | Rwy Idg  | <b>9003</b> |
| <b>123°</b> | TDZE     | <b>541</b>  |
|             | Apt Elev | <b>618</b>  |

# RNAV (RNP) Z RWY 12L

ST LOUIS LAMBERT INTL (STL)

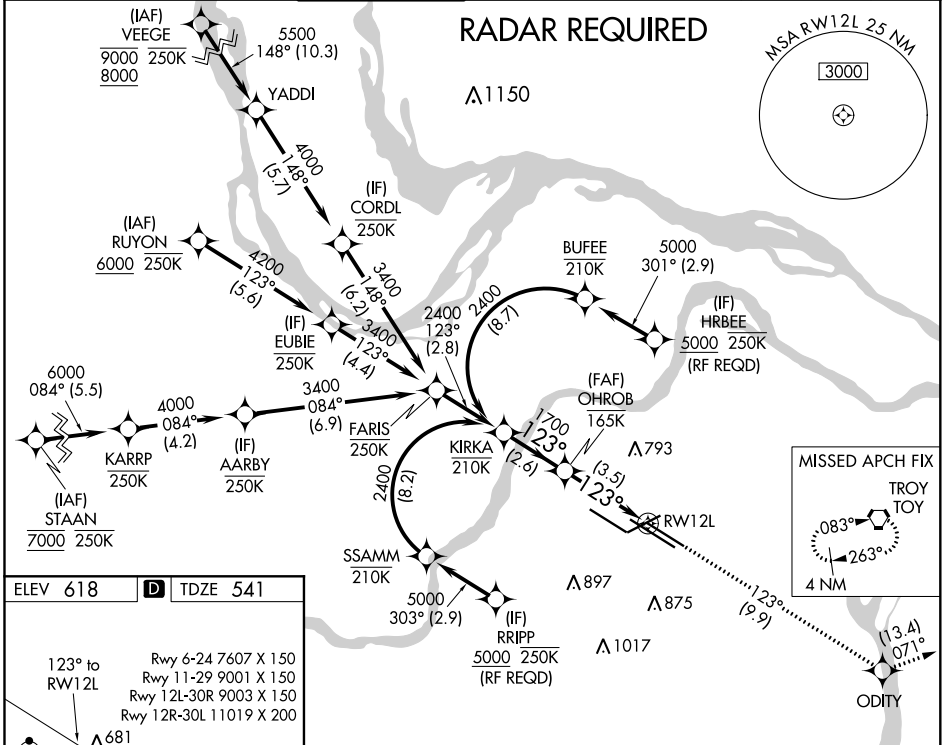
**▼** For uncompensated Baro-VNAV systems, procedure NA below -16°C (4°F) or above 54°C (130°F). GPS required. For inop ALS, increase RNP 0.30 all Cats visibility to 1 3/4 SM. Simultaneous approach authorized with Rwy 11, except for arrivals at RIRPP and HRBEE. Use of FD or AP required during simultaneous operations.

ALSF-2



MISSED APPROACH: Climb to 3000 on track 123° to ODITY and on track 071° to TOY VORTAC and hold.

|  |   |  |   |                                |       |
|--|---|--|---|--------------------------------|-------|
| D-ATIS<br><b>125.025</b><br><b>379.925</b> | ST. LOUIS APP CON<br><b>132.125 360.6</b> | ST. LOUIS TOWER<br><b>120.05 284.6</b> | GND CON<br><b>121.9 348.6</b> (Inbound)<br><b>121.65 377.175</b> (Outbound)<br><b>118.925 227.125</b> (Rwy 11/29) | CLNC DEL<br><b>119.5 363.1</b> | CPDLC |
|--|---|--|---|--------------------------------|-------|

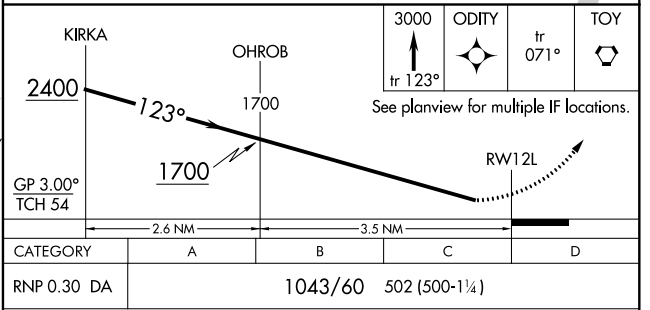


|          |          |          |
|----------|----------|----------|
| ELEV 618 | <b>D</b> | TDZE 541 |
|----------|----------|----------|

123° to RWY 12L

Rwy 6-24 7607 X 150  
Rwy 11-29 9001 X 150  
Rwy 12L-30R 9003 X 150  
Rwy 12R-30L 11019 X 200

HIRL all Rwys  
TDZ/CL Rwys 11, 12L, 12R, 29, and 30R



**AUTHORIZATION REQUIRED**

NC-3, 25 FEB 2021 to 25 MAR 2021

NC-3, 25 FEB 2021 to 25 MAR 2021