

APP CRS	Rwy Idg	<b>9001</b>
<b>123°</b>	TDZE	<b>618</b>
	Apt Elev	<b>618</b>

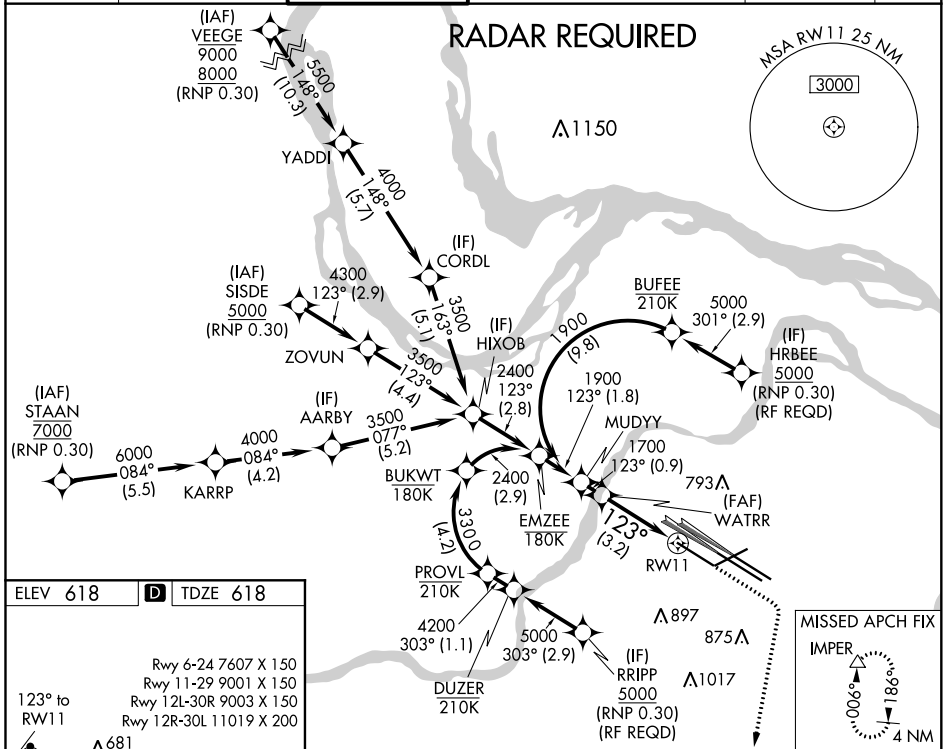
# RNAV (RNP) Z RWY 11

ST LOUIS LAMBERT INTL (STL)

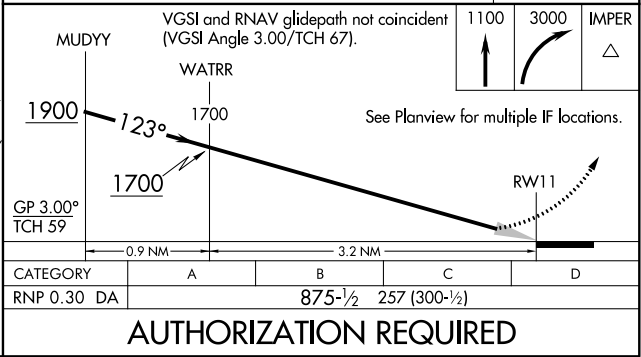
For uncompensated Baro-VNAV systems, procedure NA below -16°C (4°F) or above 54°C (130°F). Simultaneous approach authorized with Rwy 12L/R, except for arrivals at RRRPP and HRBEE. Use of FD or AP providing RNAV track guidance required during simultaneous operations. GPS required. For inop ALS, increase RNP 0.30 all Cats visibility to ¾.

ALS-F-2  
 MISSED APPROACH: Climb to 1100 then climbing right turn to 3000 direct IMPER and hold.

D-ATIS <b>125.025</b> <b>379.925</b>	ST. LOUIS APP CON <b>132.125 360.6</b>	ST. LOUIS TOWER <b>132.475 239.275</b>	GND CON <b>121.9 348.6</b> (Inbound) <b>121.65 377.175</b> (Outbound) <b>118.925 227.125</b> (Rwy 11/29)	CLNC DEL <b>119.5 363.1</b>	CPDLC
--------------------------------------------	-------------------------------------------	-------------------------------------------	-------------------------------------------------------------------------------------------------------------------	--------------------------------	-------



ELEV 618	<b>D</b>	TDZE 618
Rwy 6-24 7607 X 150 Rwy 11-29 9001 X 150 Rwy 12L-30R 9003 X 150 Rwy 12R-30L 11019 X 200		
123° to RW11		



HIRL all Rwys  
 TDZ/CL Rws 11, 12L, 12R, 29, and 30R

ST. LOUIS, MISSOURI  
 Orig-B 17AUG17

38°45'N-90°22'W

ST LOUIS LAMBERT INTL (STL)  
**RNAV (RNP) Z RWY 11**

NC-3, 25 FEB 2021 to 25 MAR 2021

NC-3, 25 FEB 2021 to 25 MAR 2021