

LOC/DME I-JAK <b>110.3</b> Chan 40	APP CRS <b>064°</b>	Rwy Idg TDZE Apt Elev <b>7352</b> <b>551</b> <b>618</b>
--	------------------------	--

# ILS or LOC RWY 6

ST LOUIS LAMBERT INTL (STL)

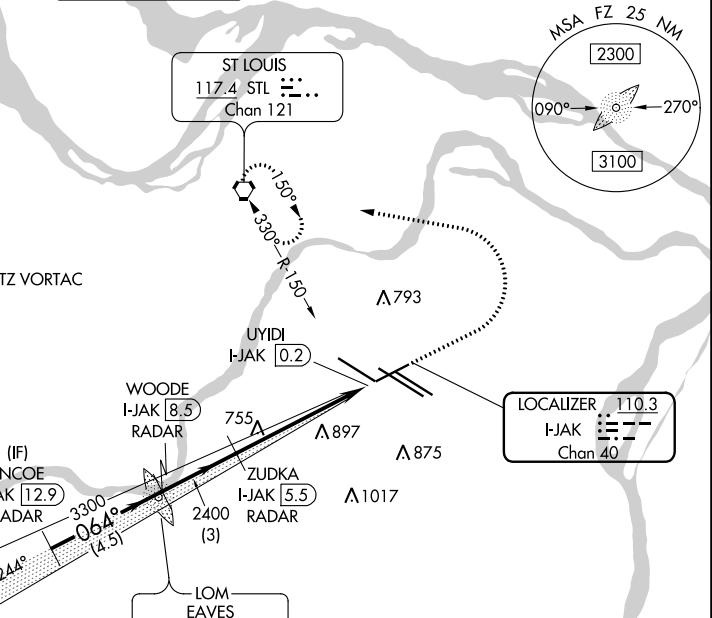
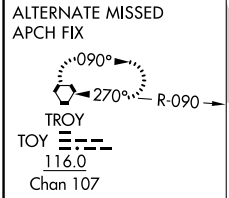
DME or RADAR required. DME or RADAR required for procedure entry.



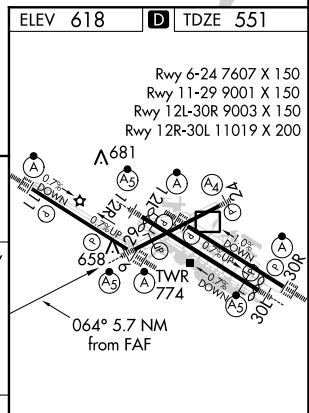
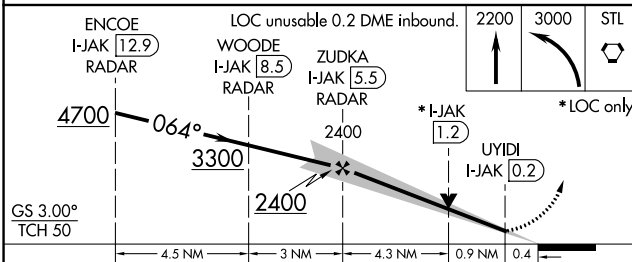
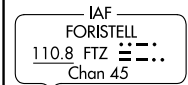
MISSED APPROACH: Climb to 2200 then climbing left turn to 3000 direct STL VORTAC and hold, continue climb-in-hold to 3000.

▼ For inop ALS, increase S-ILS 6 Cat E visibility to RVR 4000 and S-LOC 6 Cat C/D/E visibility to 1 1/2 SM.

D-ATIS <b>125.025</b> <b>379.925</b>	ST. LOUIS APP CON <b>132.125 360.6</b>	ST. LOUIS TOWER <b>132.475 239.275</b>	GND CON <b>121.9 348.6</b> (Inbound) <b>121.65 377.175</b> (Outbound) <b>118.925 227.125</b> (Rwy 11/29)	CLNC DEL <b>119.5 363.1</b>	CPDLC
--	---	---	---	--------------------------------	-------



Procedure NA for arrival on FTZ VORTAC airway radials 082 CW 095.



CATEGORY	A	B	C	D	E
S-ILS 6	751/24 200 (200-1/2)				
S-LOC 6	1020/24	469 (500-1/2)	1020/50		469 (500-1)

HIRL all Rwy's					
TDZ/CL Rwy's 11, 12L, 12R, 29, and 30R					
FAF to MAP 5.3 NM					
Knots	60	90	120	150	180
Min:Sec	5:18	3:32	2:39	2:07	1:46

NC-3, 25 FEB 2021 to 25 MAR 2021

NC-3, 25 FEB 2021 to 25 MAR 2021