

LOC/DME I-LMR <b>109.7</b> Chan <b>34</b>	APP CRS <b>123°</b>	Rwy Idg TDZE Apt Elev	12R <b>10552</b> <b>540</b> <b>618</b>	12L <b>9003</b> <b>541</b> <b>618</b>
---	------------------------	-----------------------------	---	--

# ILS or LOC RWY 12R

ST LOUIS LAMBERT INTL (STL)

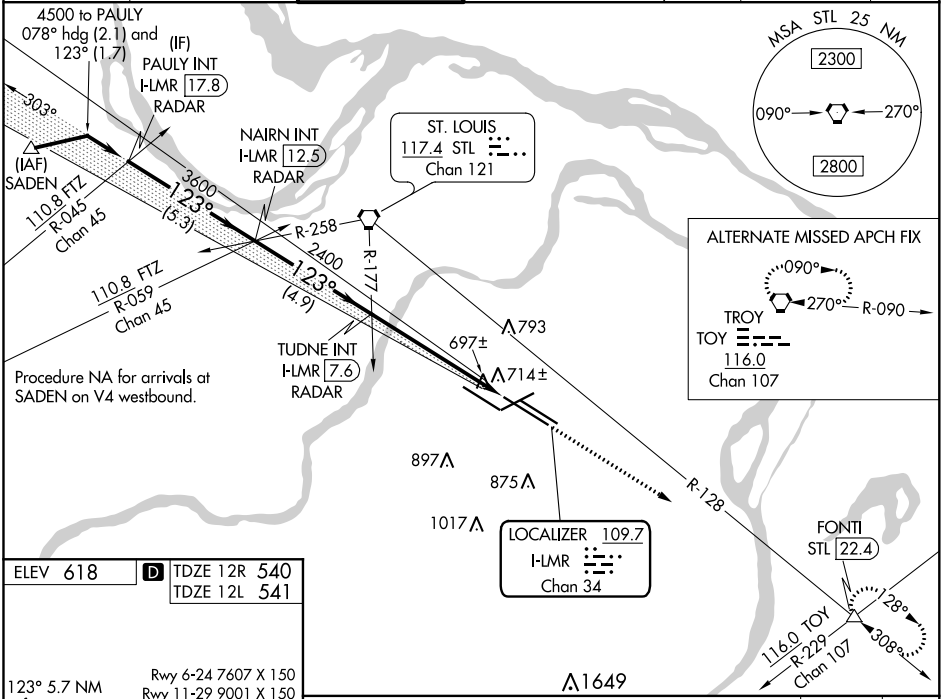
**▼** LOC only: Rwy 12R helicopter visibility reduction below  $\frac{3}{4}$  SM NA. Inop table does not apply to sidestep Rwy 12L. For inop ALS, increase S-ILS 12R Cat E visibility to RVR 4000 and increase S-LOC 12R Cats A/B visibility to RVR 5500, Cats C/D/E visibility to RVR 6000. Simultaneous approach authorized with Rwy 11. Simultaneous approach authorized with Rwy 12L requires use of vertical guidance; maintain last assigned altitude until established on glideslope.

MALSR Rwy 12R

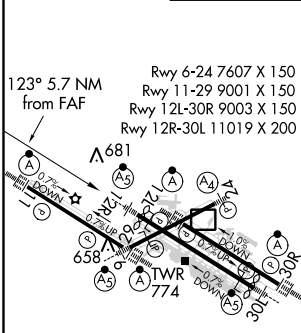
ALSF-2 Rwy 12L

MISSED APPROACH: Climb to 5000 on STL VORTAC R-128 to FONTI INT/STL 22.4 DME and hold, continue climb-in-hold to 5000.

D-ATIS <b>125.025</b> <b>379.925</b>	ST. LOUIS APP CON <b>132.125 360.6</b>	ST. LOUIS TOWER <b>118.5 257.7</b>	GND CON <b>121.9 348.6</b> (Inbound) <b>121.65 377.175</b> (Outbound) <b>118.925 227.125</b> (Rwy 11/29)	CLNC DEL <b>119.5 363.1</b>	CPDLC
--	---	---------------------------------------	---	--------------------------------	-------



ELEV 618	<b>D</b> TDZE 12R 540
	TDZE 12L 541



PAULY INT I-LMR 17.8 RADAR	NAIRN INT I-LMR 12.5 RADAR	TUDNE INT I-LMR 7.6 RADAR	5000	FONTI
4500	3600	2400	STL R-128	△
5.3 NM		4.9 NM	4.6 NM	1.2 NM
* I-LMR 3		* LOC only		

CATEGORY	A	B	C	D	E
S-ILS 12R	740/18 200 (200- $\frac{1}{2}$ )				
S-LOC 12R	960/40 420 (400- $\frac{3}{4}$ )				
SIDESTEP 12L	980-1 439 (400-1)	980-1 $\frac{1}{2}$ 439 (400-1 $\frac{1}{2}$ )	980-2 439 (400-2)		

NC-3, 25 FEB 2021 to 25 MAR 2021

NC-3, 25 FEB 2021 to 25 MAR 2021