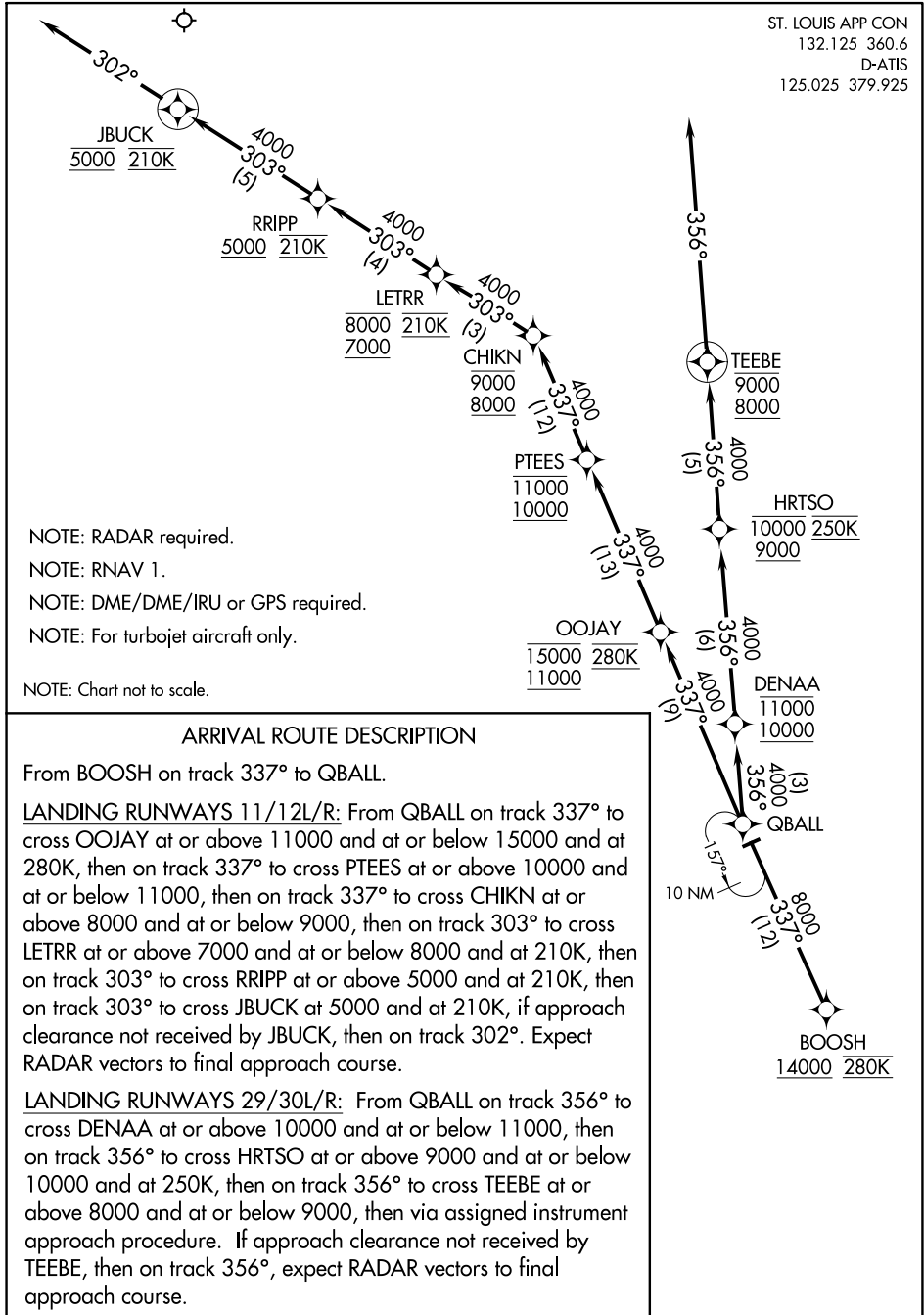


BOOSH THREE ARRIVAL (RNAV) Arrival Routes

ST. LOUIS, MISSOURI

ST. LOUIS APP CON
132.125 360.6
D-ATIS
125.025 379.925



- NOTE: RADAR required.
- NOTE: RNAV 1.
- NOTE: DME/DME/IRU or GPS required.
- NOTE: For turbojet aircraft only.
- NOTE: Chart not to scale.

ARRIVAL ROUTE DESCRIPTION

From BOOSH on track 337° to QBALL.

LANDING RUNWAYS 11/12L/R: From QBALL on track 337° to cross OOJAY at or above 11000 and at or below 15000 and at 280K, then on track 337° to cross PTEES at or above 10000 and at or below 11000, then on track 337° to cross CHIKN at or above 8000 and at or below 9000, then on track 303° to cross LETRR at or above 7000 and at or below 8000 and at 210K, then on track 303° to cross RRIPP at or above 5000 and at 210K, then on track 303° to cross JBUCK at 5000 and at 210K, if approach clearance not received by JBUCK, then on track 302°. Expect RADAR vectors to final approach course.

LANDING RUNWAYS 29/30L/R: From QBALL on track 356° to cross DENAA at or above 10000 and at or below 11000, then on track 356° to cross HRTSO at or above 9000 and at or below 10000 and at 250K, then on track 356° to cross TEEBE at or above 8000 and at or below 9000, then via assigned instrument approach procedure. If approach clearance not received by TEEBE, then on track 356°, expect RADAR vectors to final approach course.

BOOSH THREE ARRIVAL (RNAV) Arrival Routes

NC-3, 25 FEB 2021 to 25 MAR 2021

NC-3, 25 FEB 2021 to 25 MAR 2021