

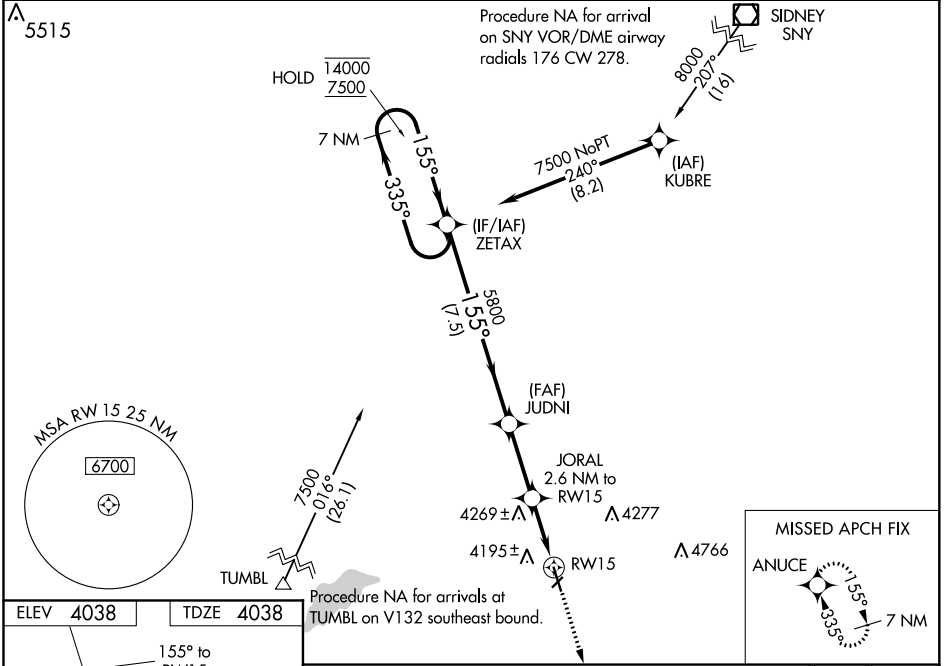
WAAS CH <b>56330</b> <b>W15A</b>	APP CRS <b>155°</b>	Rwy Idg TDZE Apt Elev	<b>5201</b> <b>4038</b> <b>4038</b>
--	------------------------	-----------------------------	---

# RNAV (GPS) RWY 15

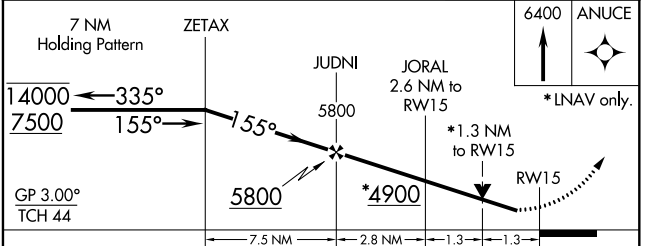
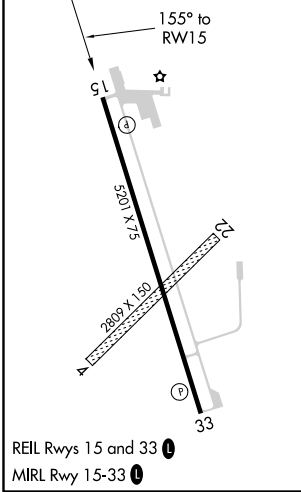
STERLING MUNI (STK)

RNP APCH.	<p><b>MISSED APPROACH:</b> Climb to 6400 direct ANUCE and hold.</p>
<p><b>⚠</b> Circling NA to Rws 4 and 22. Rwy 15 helicopter visibility reduction below 3/4 SM NA. For uncompensated Baro-VNAV systems, LNAV/VNAV NA below -22°C or above 54°C.</p>	

AWOS-3 <b>118.525</b>	DENVER CENTER <b>118.475 225.4</b>	UNICOM <b>122.8 (CTAF)</b>
--------------------------	---------------------------------------	-------------------------------



ELEV <b>4038</b>	TDZE <b>4038</b>
------------------	------------------



CATEGORY	A	B	C	D
LPV DA		4288-1	250 (300-1)	
LNAV/VNAV DA		4288-1	250 (300-1)	
LNAV MDA	4480-1	442 (500-1)	4480-1 3/8	442 (500-1 3/8)
CIRCLING	4520-1 482 (500-1)	4580-1 542 (600-1)	4620-1 1/2 582 (600-1 1/2)	4720-2 1/4 682 (700-2 1/4)

SW-1, 25 FEB 2021 to 25 MAR 2021

SW-1, 25 FEB 2021 to 25 MAR 2021