

ILS or LOC RWY 4R

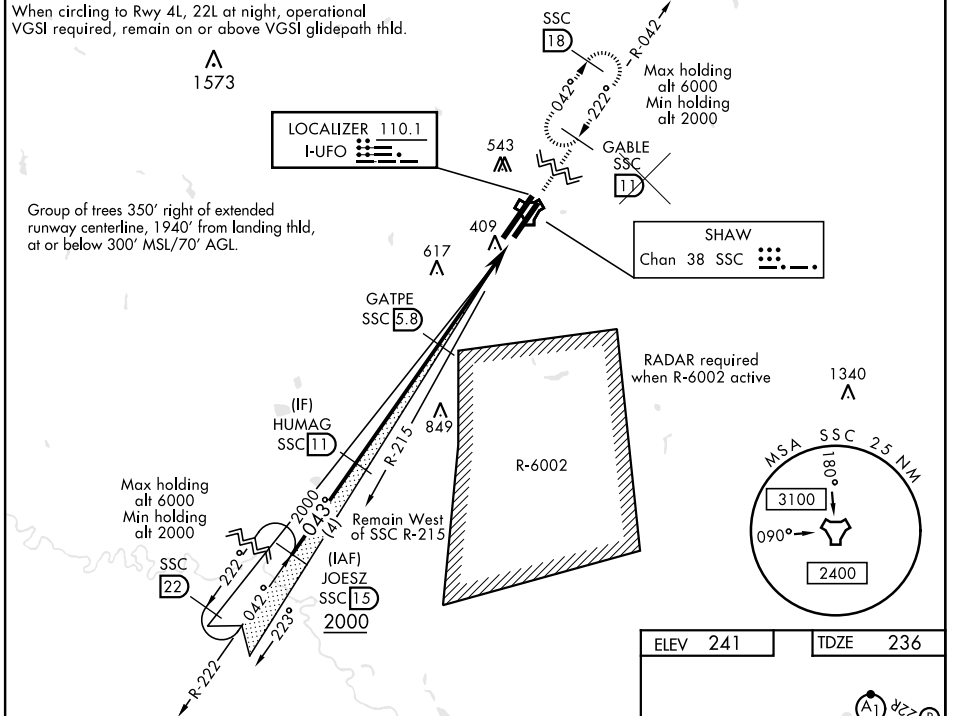
LOC I-UFO 110.1	APCH CRS 043°	Rwy Idg TDZE Arprt Elev 8014 236 241	AL-409 [USAF]	SHAW AFB (KSSC)
---------------------------	-------------------------	--	---------------	-----------------

RADAR or DME Required.

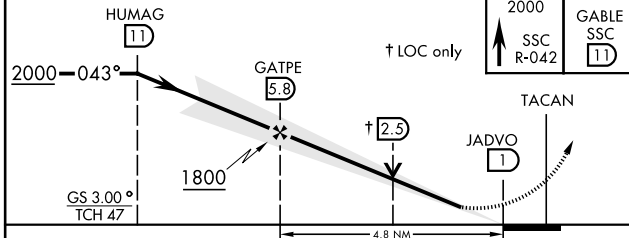
SALSF
A2
≡

MISSED APPROACH: Climbing to 2000, intercept SSC TACAN R-042 to GABLE and hold.

ATIS ★ 132.125 270.1	SHAW APP CON 125.4 318.1	SHAW TOWER ★ 126.65 254.25	GND CON 126.1 275.8	CLNC DEL 126.1 275.8
--------------------------------	------------------------------------	--------------------------------------	-------------------------------	--------------------------------



EMERG SAFE ALT 100 NM 3800



ELEV 241	TDZE 236
----------	----------

	Knots	60	90	120	150	180
	Min:Sec	4:48	3:12	2:24	1:55	1:36

CATEGORY	A	B	C	D	E
S-ILS 4R	486/40		250	(300-3/4)	
S-LOC 4R*	780/40	544 (600-3/4)	780-1 1/8	544	(600-1 1/8)
CIRCLING	820-1	880-1	1000-2 1/4	1000-2 1/2	1000-2 3/4
	579 (600-1)	639 (700-1)	759 (800-2 1/4)	759 (800-2 1/2)	759 (800-2 3/4)

ILS or LOC RWY 4R

SE-2, 25 FEB 2021 to 25 MAR 2021

SE-2, 25 FEB 2021 to 25 MAR 2021