

# HI-TACAN Z RWY 22R

TACAN SSC Chan <b>38</b>	APCH CRS <b>222°</b>	22R Rwy ldg TDZE <b>240</b> Arprt Elev <b>241</b>	22L <b>8014</b> <b>235</b> <b>241</b>
--------------------------	----------------------	---	---------------------------------------

JAL-409 [USAF]

SHAW AFB (KSSC)

▼ \* When ALS inop, increase vis to 1½ miles.  
 \*\* When ALS inop, increase vis to 1¾ miles.

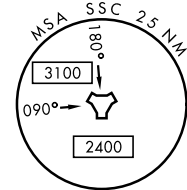
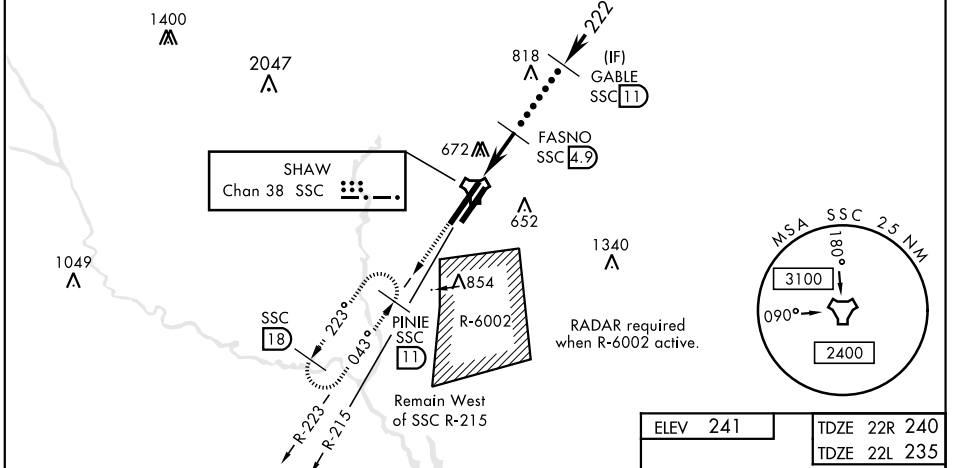
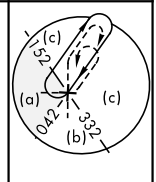


MISSED APPROACH: Climbing to 2000, intercept SSC TACAN R-223 to PINIE and hold.

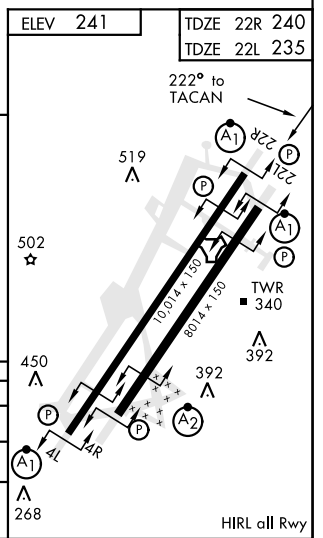
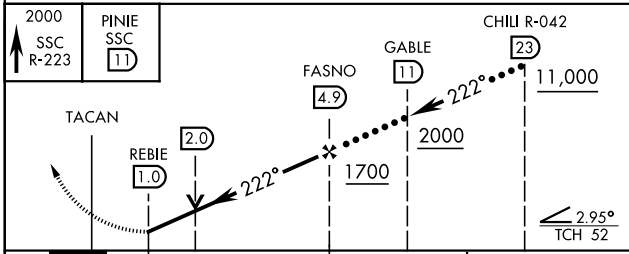
ATIS ★ <b>132.125 270.1</b>	SHAW APP CON <b>125.4 318.1</b>	SHAW TOWER ★ <b>126.65 254.25</b>	GND CON <b>126.1 275.8</b>	CLNC DEL <b>126.1 275.8</b>
--------------------------------	------------------------------------	--------------------------------------	-------------------------------	--------------------------------

USAF Only: When Rwy 4L VGSi inop, circling to Rwy 4L at night requires approval from MAJCOM director of Ops or equivalent. Terrain 242' MSL, 200' prior to threshold.

USAF Only: When VGSi inop, sidestep to Rwy 22L, circling to Rwy 22L at night requires approval from MAJCOM Director of Ops or equivalent. Terrain 239' MSL, 200' prior to threshold, 200' right of course.



EMERG SAFE ALT 100 NM 3800



CATEGORY	C	D	E
S-22R*	760/55	520 (600-1)	
SIDESTEP 22L**	760/55	505 (600-1)	
CIRCLING	1000-2¼ 759 (800-2¼)	1000-2½ 759 (800-2½)	1000-2¾ 759 (800-2¾)

# HI-TACAN Z RWY 22R

SE-2, 25 FEB 2021 to 25 MAR 2021

SE-2, 25 FEB 2021 to 25 MAR 2021