

WAAS CH <b>53420</b> <b>W24A</b>	APP CRS <b>241°</b>	Rwy ldg TDZE Apt Elev	<b>8120</b> <b>6771</b> <b>6814</b>
--	------------------------	-----------------------------	---

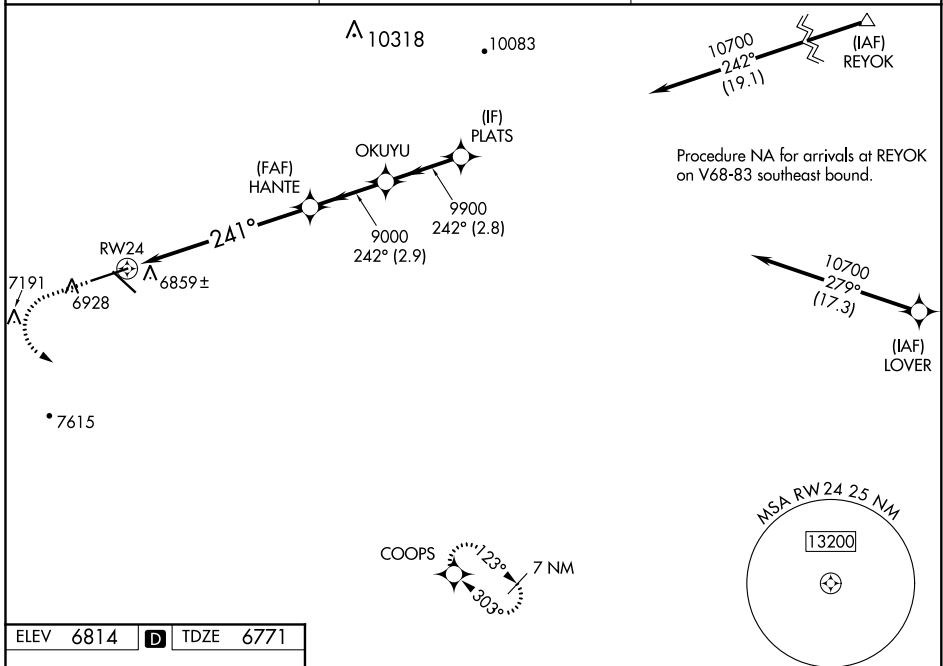
# RNAV (GPS) RWY 24

SIERRA BLANCA RGNL (S.R.R.)

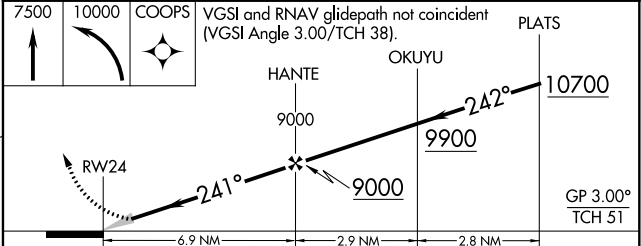
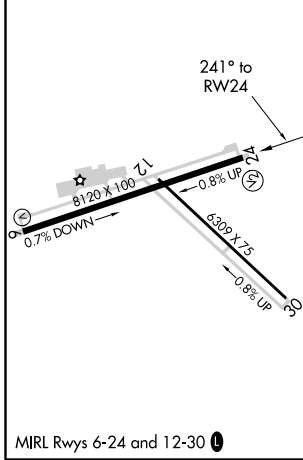
**NA** For uncompensated Baro-VNAV systems, LNAV/VNAV NA below -28°C (-18°F) or above 48°C (118°F).  
**NA** DME/DME RNP-0.3 NA. Circling NA to Rwy 12/30.  
 When local altimeter setting not received, procedure NA.

MISSED APPROACH: Climb to 7500 then climbing left turn to 10000 direct COOPS and hold.

AWOS-3 <b>126.475</b>	ALBUQUERQUE CENTER <b>132.65 257.6</b>	UNICOM <b>122.8 (CTAF)</b>
--------------------------	---	-------------------------------



ELEV 6814	<b>D</b>	TDZE 6771
-----------	----------	-----------



CATEGORY	A	B	C	D
LPV DA		6971- <sup>3</sup> / <sub>4</sub>	200 (200- <sup>3</sup> / <sub>4</sub> )	
LNAV/VNAV DA		7220-1 <sup>1</sup> / <sub>2</sub>	449 (400-1 <sup>1</sup> / <sub>2</sub> )	
LNAV MDA	7380-1	609 (600-1)	7380-1 <sup>3</sup> / <sub>4</sub>	609 (600-1 <sup>3</sup> / <sub>4</sub> )
CIRCLING	7380-1	566 (600-1)	7380-1 <sup>3</sup> / <sub>4</sub>	7480-2
			566 (600-1 <sup>3</sup> / <sub>4</sub> )	666 (700-2)

SW-1, 25 FEB 2021 to 25 MAR 2021

SW-1, 25 FEB 2021 to 25 MAR 2021