

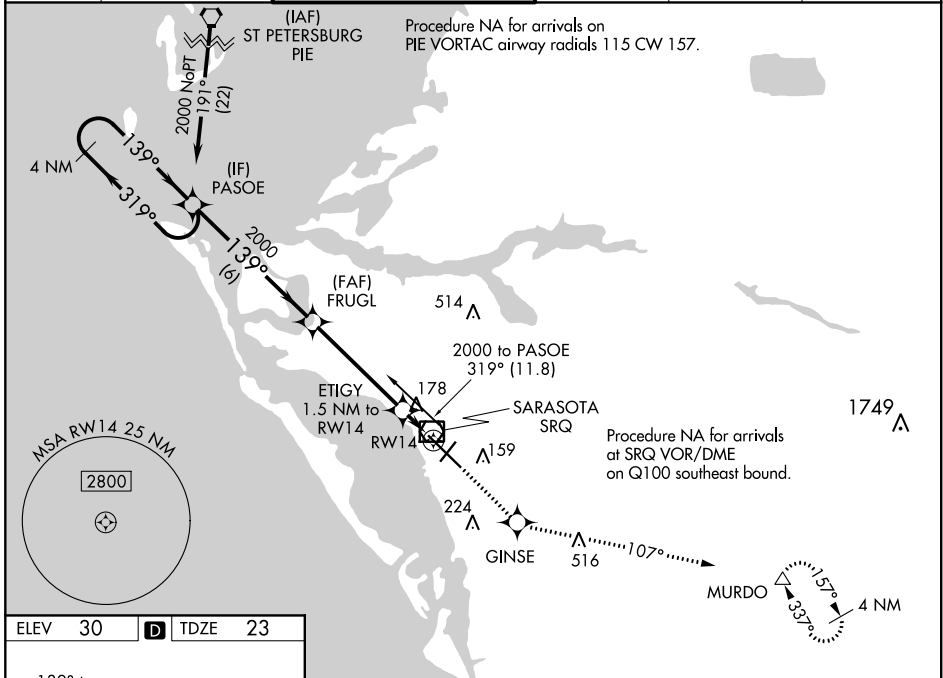
WAAS CH <b>86705</b> <b>W14A</b>	APP CRS <b>139°</b>	Rwy Idg <b>7540</b> TDZE <b>23</b> Apt Elev <b>30</b>
--	------------------------	---

# RNAV (GPS) RWY 14

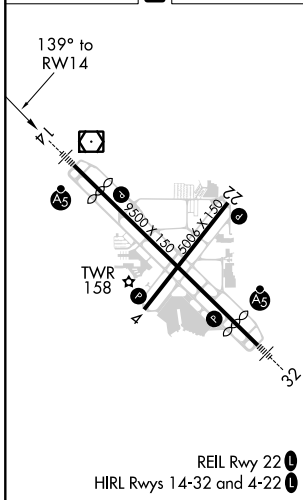
SARASOTA/BRADENTON INTL (SRQ)

RNP APCH.	MALSR	MISSED APPROACH: Climb to 3000 direct GINSE and on track 107° to MURDO and hold.
<p>▼ For uncompensated Baro-VNAV systems, LNAV/VNAV NA below -15°C or above 43°C. When control tower closed, LPV and LNAV/VNAV NA; increase LNAV all Cats visibility to 1 mile. When control tower closed, inop table does not apply to LNAV Cats A and B. When control tower closed, for inop MALSR, increase LNAV Cats C and D visibility to 1½ mile.</p>		

ATIS <b>124.375</b>	TAMPA APP CON <b>119.65 353.575</b>	SARASOTA TOWER ★ <b>120.1 (CTAF) 0 256.8</b>	GND CON <b>121.9 273.6</b>	CLNC DEL <b>118.25</b>	UNICOM <b>122.95</b>
------------------------	--	---	-------------------------------	---------------------------	-------------------------



ELEV 30	<b>D</b>	TDZE 23
---------	----------	---------



4 NM Holding Pattern	PASOE	FRUGL	3000	GINSE	tr 107°	MURDO
2000 ← 319°	139° →	2000	ETIGY 1.5 NM to RW14	*LNAV only.		
GP 3.00°	TCH 54	*560	RW14			
	6 NM	4.5 NM	1.5 NM			
CATEGORY	A	B	C	D		
LPV DA	223-½		200 (200-½)			
LNAV/VNAV DA	489-1⅛		466 (500-1⅛)			
LNAV MDA	440-½	417 (500-½)	440-¾	417 (500-¾)		
CIRCLING	500-1	470 (500-1)	500-1½	580-2	470 (500-1½) 550 (600-2)	

SE-3, 25 FEB 2021 to 25 MAR 2021

SE-3, 25 FEB 2021 to 25 MAR 2021