

LOC I-DSY <b>110.1</b> Chan <b>38</b>	APP CRS <b>011°</b>	Rwy Idg TDZE <b>253</b> Apt Elev <b>264</b>
---	------------------------	---

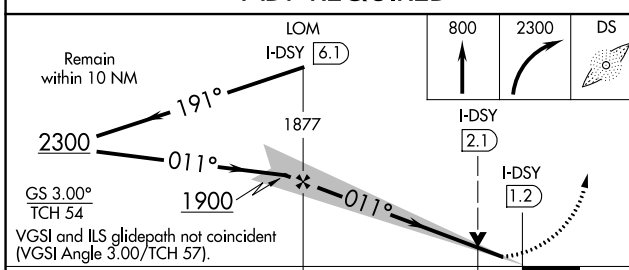
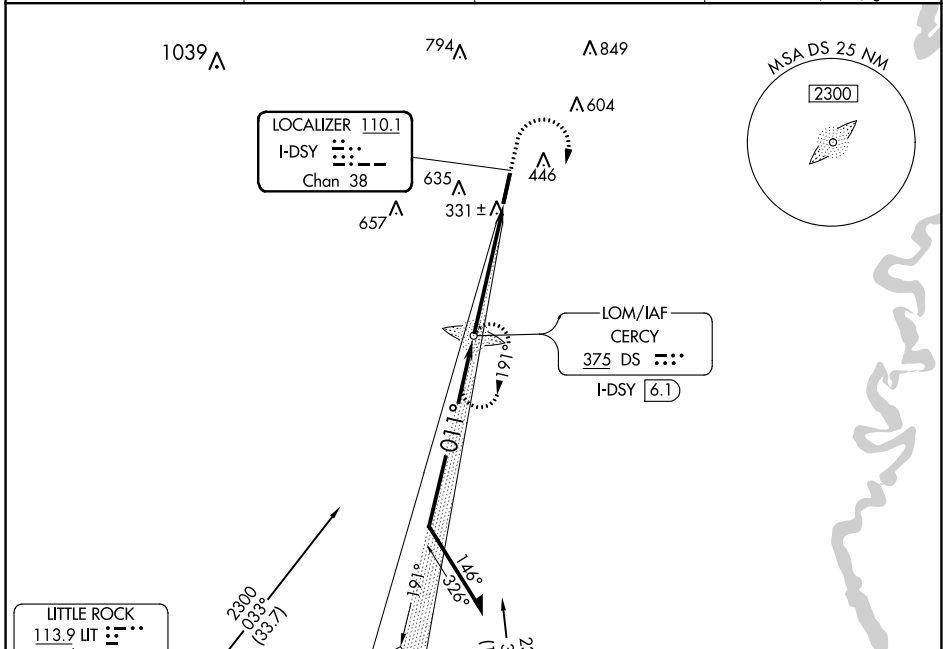
# ILS or LOC RWY 1

SEARCY MUNI (SRC)

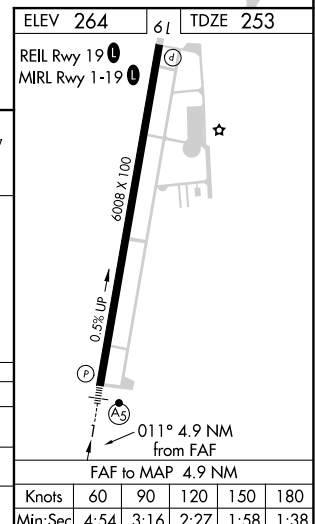
**NA** Circling NA for Cat C west of runway 1-19. If local altimeter setting not received, use Little Rock Bill and Hillary Clinton National/Adams Field altimeter setting and increase all DA/MDAs 100 feet. VDP NA with Little Rock Bill and Hillary Clinton National/Adams Field altimeter setting. ADF Required.

**MALSR** MISSED APPROACH: Climb to 800 then climbing right turn to 2300 direct CERCY LOM and hold.

AWOS-3PT <b>128.325</b>	LITTLE ROCK APP CON <b>119.75 291.775</b>	CLNC DEL <b>119.75</b>	UNICOM <b>122.7 (CTAF)</b>
----------------------------	--	---------------------------	-------------------------------



CATEGORY	A	B	C	D
S-ILS 1	453-½	200 (200-½)		NA
S-LOC 1	600-½	347 (400-½)		NA
CIRCLING	760-1	496 (500-1)	760-1½ 496 (500-1½)	NA



Knots	60	90	120	150	180
Min:Sec	4:54	3:16	2:27	1:58	1:38

SC-1, 25 FEB 2021 to 25 MAR 2021

SC-1, 25 FEB 2021 to 25 MAR 2021