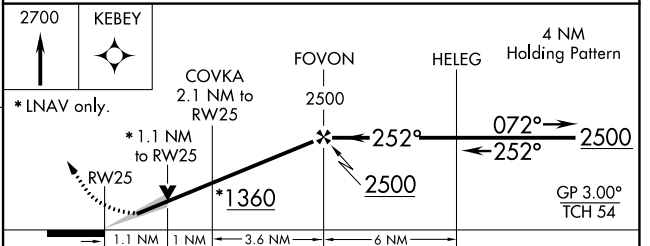
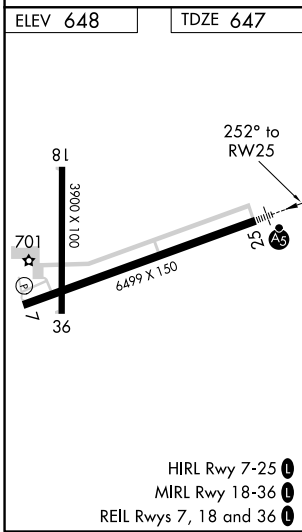
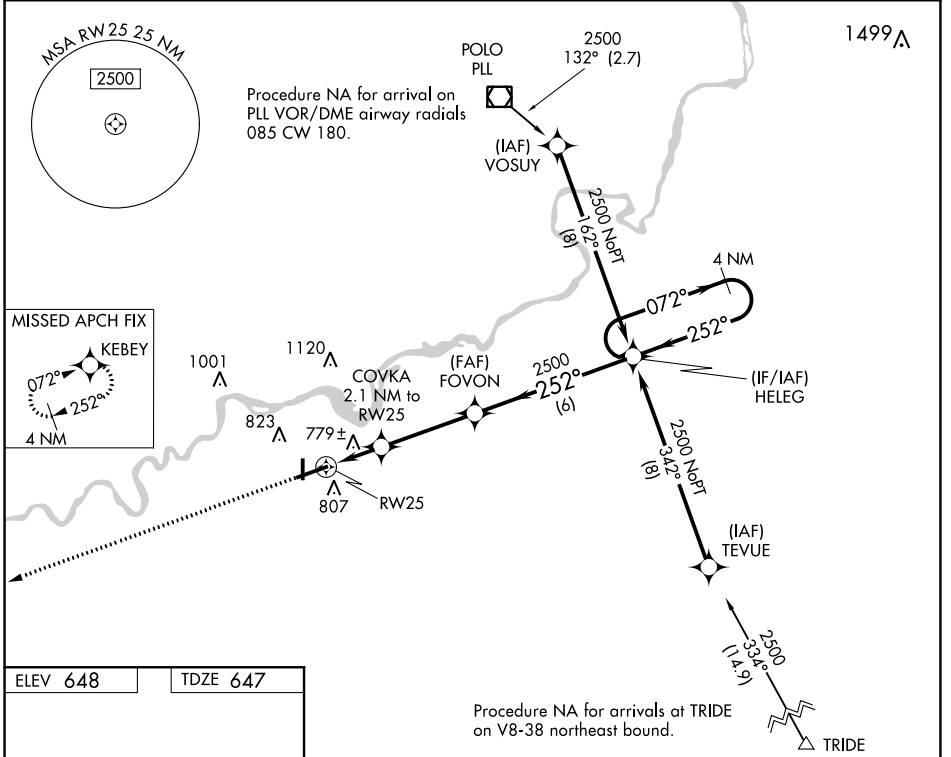


WAAS CH 57910 W25A	APP CRS 252°	Rwy Idg TDZE Apt Elev	6499 647 648
--	------------------------	-----------------------------	---

RNAV (GPS) RWY 25

WHITESIDE COUNTY AIRPORT-JOSEPH H BITTORF FIELD (SQI)

	For uncompensated Baro-VNAV systems, LNAV/VNAV NA below -16°C (4°F) or above 54°C (130°F). Circling Rwy 36 NA at night. DME/DME RNP-0.3 NA.	MALSR 	MISSED APPROACH: Climb to 2700 direct KEBEY and hold.
AWOS-3PT 119.175	ROCKFORD APP CON 126.0 327.0	CLNC DEL 128.0	UNICOM 123.0 (CTAF) 0



CATEGORY	A	B	C	D
LPV DA	847-1/2 200 (200-1/2)			
LNAV/VNAV DA	1047-7/8 400 (400-7/8)			
LNAV MDA	1040-1/2 393 (400-1/2)		1040-5/8 393 (400-5/8)	
CIRCLING	1140-1 492 (500-1)		1160-1 1/2 1480-2 3/4 512 (600-1 1/2) 832 (900-2 3/4)	

EC-3, 25 FEB 2021 to 25 MAR 2021

EC-3, 25 FEB 2021 to 25 MAR 2021