

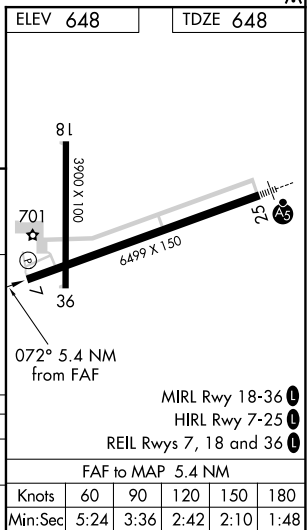
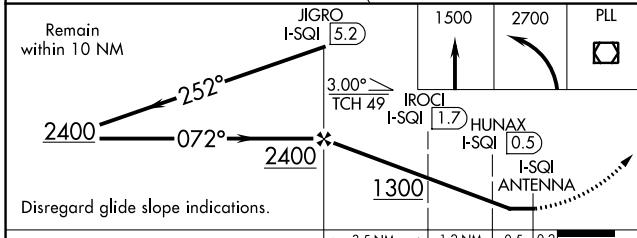
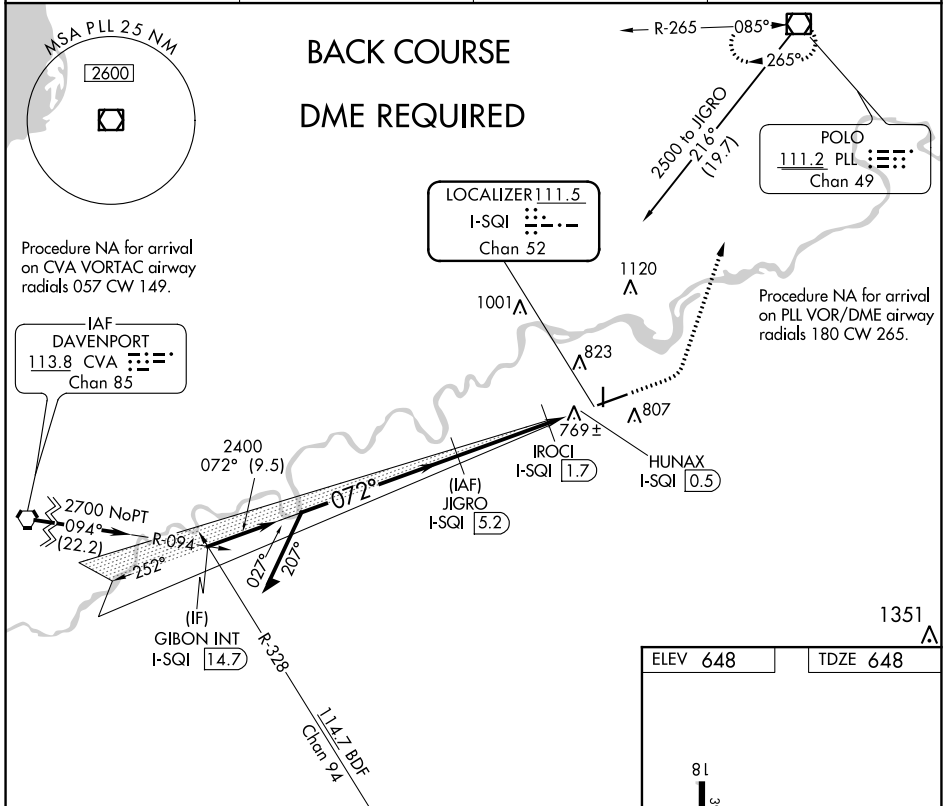
LOC/DME I-SQI 111.5 Chan 52	APP CRS 072°	Rwy ldg 6499 TDZE 648 Apt Elev 648
---	------------------------	---

WHITESIDE COUNTY AIRPORT-**LOC BC RWY 7**
JOSEPH H BITTORF FIELD (SQI)

NA Circling Rwy 36 NA at night.
Rwy 7 helicopter visibility reduction below 3/4 SM NA.
DME required.

MISSED APPROACH: Climb to 1500 then climbing left turn to 2700 direct PLL VOR/DME and hold.

AWOS-3PT 119.175	ROCKFORD APP CON 126.0 327.0	CLNC DEL 128.0	UNICOM 123.0 (CTAF)
----------------------------	--	--------------------------	-------------------------------



EC-3, 25 FEB 2021 to 25 MAR 2021

EC-3, 25 FEB 2021 to 25 MAR 2021