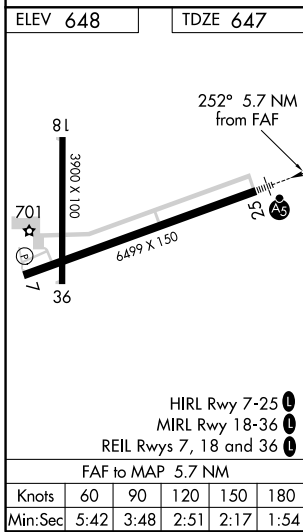
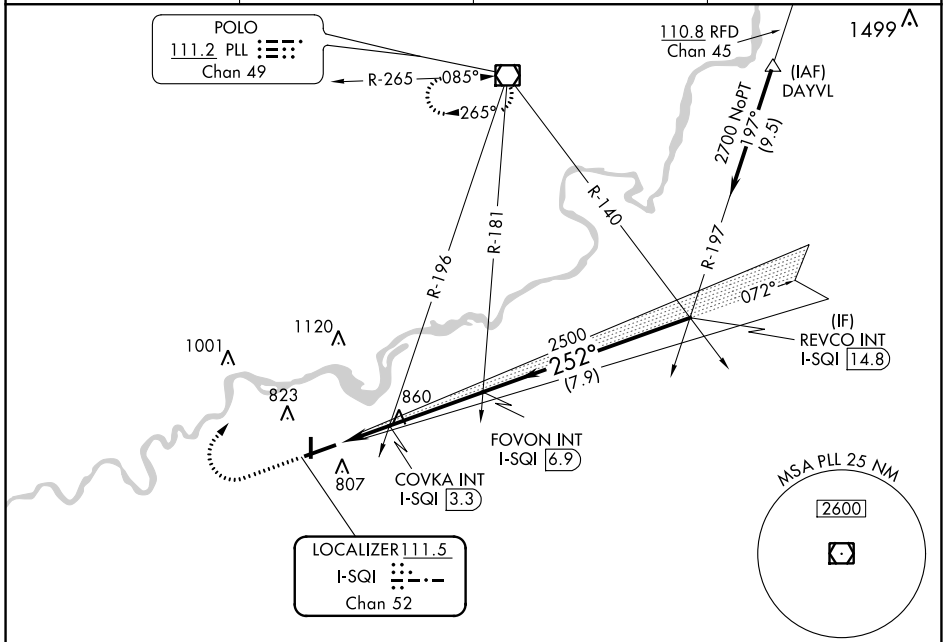


LOC/DME I-SQI 111.5 Chan 52	APP CRS 252°	Rwy Idg 6499	TDZE 647
		Apt Elev 648	

WHITESIDE COUNTY **ILS or LOC RWY 25**
AIRPORT-JOSEPH H BITTORF FIELD (SQI)

NA Circling Rwy 36 NA at night.	MALSR	MISSED APPROACH: Climb to 2000 then climbing right turn to 2700 direct PLL VOR/DME and hold.	
AWOS-3PT 119.175	ROCKFORD APP CON 126.0 327.0	CLNC DEL 128.0	UNICOM 123.0 (CTAF) 0



ELEV 648	TDZE 647				
2000	2700	PLL	FOVON INT I-SQI 6.9	REVCO INT I-SQI 14.8	
*LOC only.		COVKA INT I-SQI 3.3	2500	2700	
	I-SQI 1.2	I-SQI 2.6	1320*	2500	GS 3.00° TCH 54
	1.3 NM	0.8 NM	3.6 NM	7.9 NM	
CATEGORY	A	B	C	D	
S-ILS 25	847-1/2 200 (200-1/2)				
S-LOC 25	1320-1/2 673 (700-1/2)	1320-1/2 673 (700-1/2)			
C CIRCLING	1320-1 672 (700-1)	1320-2 672 (700-2)	1480-2 3/4 832 (900-2 3/4)		
COVKA FIX MINIMUMS (DUAL VOR RECEIVERS OR DME REQUIRED)					
S-LOC 25	1120-1/2 473 (500-1/2)	1120-1 473 (500-1)			
C CIRCLING	1140-1 492 (500-1)	1160-1/2 512 (600-1/2)	1480-2 3/4 832 (900-2 3/4)		

EC-3, 25 FEB 2021 to 25 MAR 2021

EC-3, 25 FEB 2021 to 25 MAR 2021