

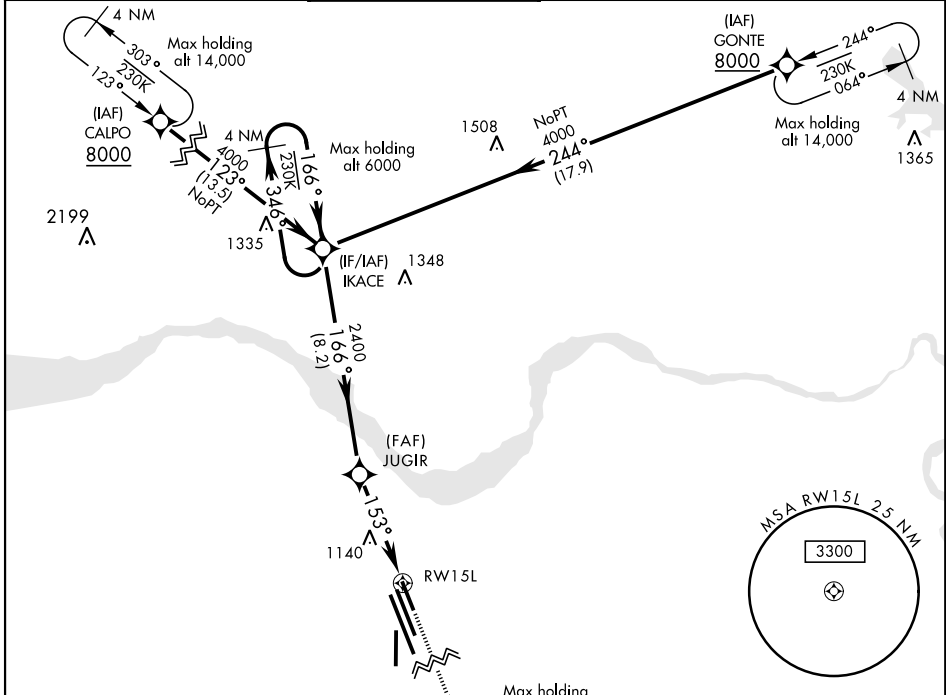
RNAV (GPS) RWY 15L

SHEPPARD AFB/WICHITA FALLS MUNI (KSPS)

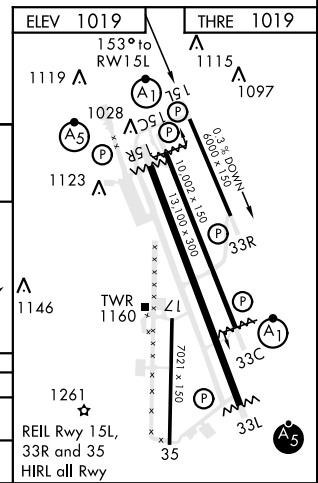
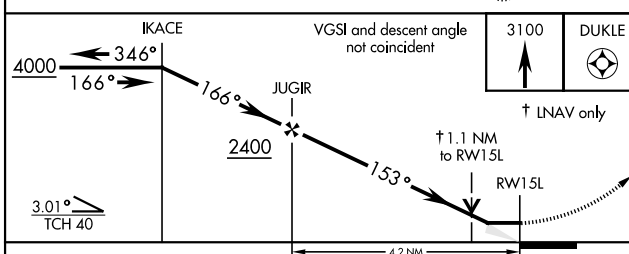
APCH CRS	Rwy ldg	6000
153°	THRE	1019
	Arpt Elev	1019

<p>▼ * Circling NA West of RWY 15R/33L. DME/DME RNP-0.3 NA.</p>	<p>MISSED APPROACH: Climb and maintain 3100, track 153° direct DUKLE and hold.</p>
--	--

<p>ATIS ★ 132.05 269.9</p>	<p>SHEPPARD APP CON 118.2 269.025</p>	<p>SHEPPARD TOWER ★ 119.75 279.525 (CTAF)</p>	<p>GND CON 125.5 289.4</p>	<p>CLNC DEL 121.2 282.225</p>	<p>ASR</p>
---------------------------------------	--	--	---------------------------------------	--	------------



EMERG SAFE ALT FROM "RWY 15L" 100 NM 4600



CATEGORY	A	B	C	D	E
LNAV MDA	NA	1420-1 401 (500-1)	1420-1½ 401 (500-1½)	2020-3	NA
☉ CIRCLING*	NA	1480-1 461 (500-1)	1480-1½ 461 (500-1½)	1001 (1100-3)	NA

WICHITA FALLS, TEXAS 33°59'N-98°30'W SHEPPARD AFB/WICHITA FALLS MUNI (KSPS)

Amdt 2 09JAN14

RNAV (GPS) RWY 15L

SC-2, 25 FEB 2021 to 25 MAR 2021

SC-2, 25 FEB 2021 to 25 MAR 2021