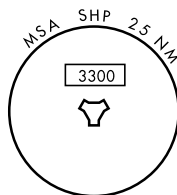
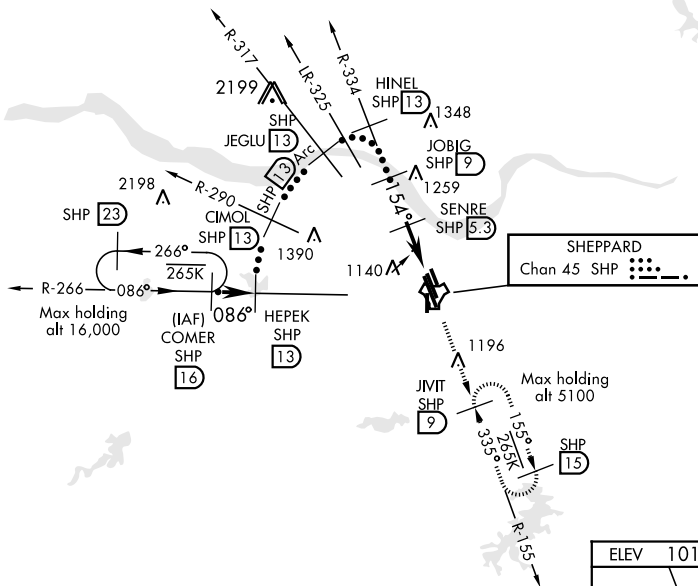
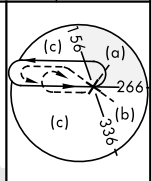


# HI-TACAN RWY 15C

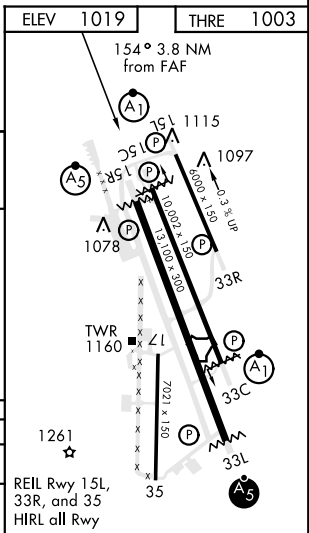
TACAN SHP Chan 45	APCH CRS 154°	Rwy ldg THRE 1003 Arpt Elev 1019	JAL-454 [USAF]	SHEPPARD AFB/WICHITA FALLS MUNI (KSPS)	
* When ALS inop, increase CAT CDE vis to 1½ miles. ** Circling not authorized W of Rwy 15R-33L.		ALSF-1	MISSED APPROACH: Climb and maintain 3100, intercept SHP TACAN R-155 to SHP R-155/9 DME (JIVIT) and hold.		
ATIS *	SHEPPARD APP CON	SHEPPARD TOWER *	GND CON	CLNC DEL	ASR
132.05 269.9	118.2 269.025	119.75 279.525 (CTAF)	125.5 289.4	121.2 282.225	

CAUTION: Do not confuse parallel taxiway with Rwy 15R-33L.



EMERG SAFE ALT 100 NM 4600

COMER R-266 HEPEK R-290 CIMOL R-290 JEGLU R-317 HINEL R-334		VGSI and Descent Angle not coincident.		3100 SHP R-155	JIVIT SHP 9
10,000		6000		TACAN	
3.09° TCH 46		3200		2300	
CATEGORY	C	D	E		
S-15C *	1420-¾	417	(500-¾)		
CIRCLING **	1480-1½ 461 (500-1½)	2020-3 1001 (1100-3)	2080-3 1061 (1100-3)		



# HI-TACAN RWY 15C

SC-2, 25 FEB 2021 to 25 MAR 2021

SC-2, 25 FEB 2021 to 25 MAR 2021