

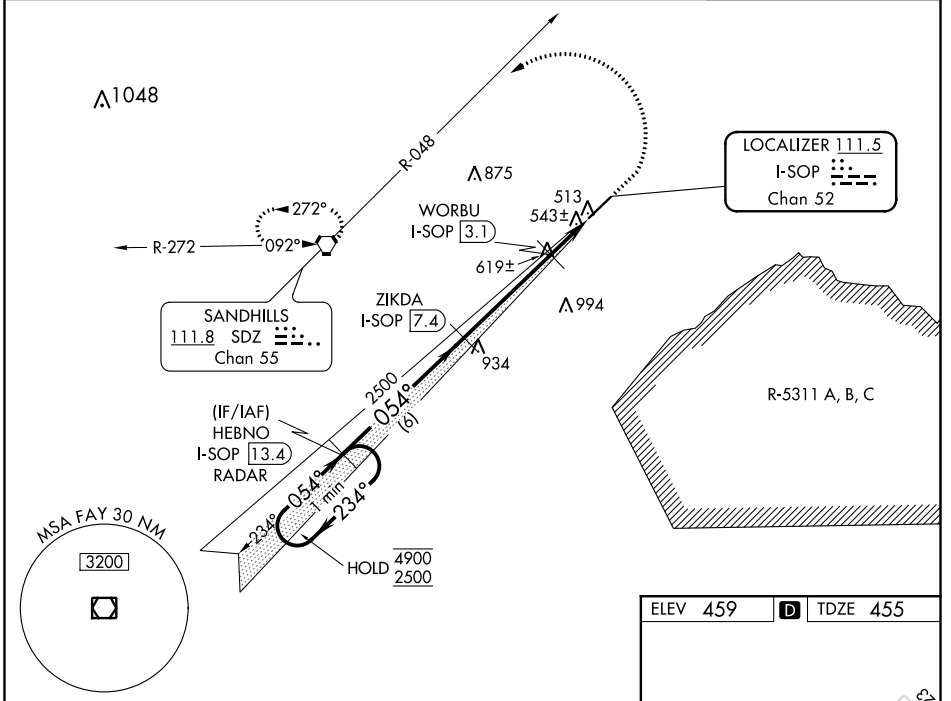
LOC/DME I-SOP <b>111.5</b> Chan <b>52</b>	APP CRS <b>054°</b>	Rwy Idg TDZE Apt Elev	<b>5502</b> <b>455</b> <b>459</b>
---	------------------------	-----------------------------	---

# ILS Z or LOC Z RWY 5

MOORE COUNTY(SOP)

DME required. RADAR required for procedure entry.	MALSR 	MISSED APPROACH: Climb to 1400 then climbing left turn to 3300 on heading 300° and on SDZ VORTAC R-048 to SDZ VORTAC and hold.
--	-----------	--

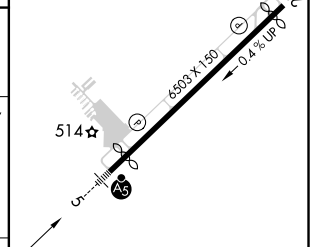
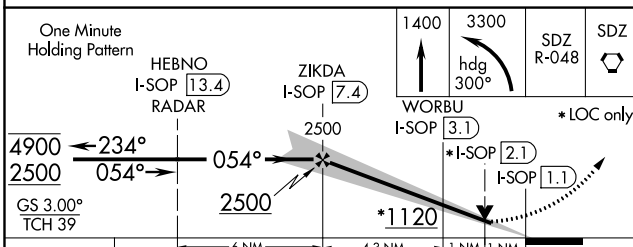
AWOS-3PT <b>127.575</b>	FAYETTEVILLE APP CON <b>127.8 343.725</b>	CLNC DEL <b>127.0</b>	UNICOM <b>123.05</b> (CTAF)
----------------------------	--	--------------------------	--------------------------------



SE-2, 25 FEB 2021 to 25 MAR 2021

SE-2, 25 FEB 2021 to 25 MAR 2021

ELEV 459		TDZE 455
----------	--	----------



One Minute Holding Pattern	HEBNO I-SOP 13.4 RADAR	ZIKDA I-SOP 7.4	WORBU I-SOP 3.1	*LOC only
4900	2500	2500	2500	1120
GS 3.00°	TCH 39	6 NM	4.3 NM	1 NM 1 NM
CATEGORY	A	B	C	D
S-ILS 5	655-1/2		200 (200-1/2)	
S-LOC 5	800-1/2	345 (400-1/2)	800-5/8	345 (400-5/8)
CIRCLING	880-1 421 (500-1)	920-1 461 (500-1)	1100-1 1/4 641 (700-1 1/4)	1360-3 901 (1000-3)

REIL Rwy 23	HIRL Rwy 5-23
-------------	---------------