

CHALONE THREE DEPARTURE

AL-363 (FAA)

SALINAS MUNI (SNS)
SALINAS, CALIFORNIA

WOODSIDE
113.9 OSI
Chan 86
N37°23.55'-W122°16.88'
L-2-3, H-3

SAN JOSE
114.1 SJC
Chan 88
N37°22.48'-W121°56.68'
L-2-3

SALINAS
117.3 SNS
Chan 120
N36°39.83'-W121°36.19'
L-3, H-3

PANOCHÉ
112.6 PXN
Chan 73
N36°42.93'-W120°46.72'
L-3, H-3

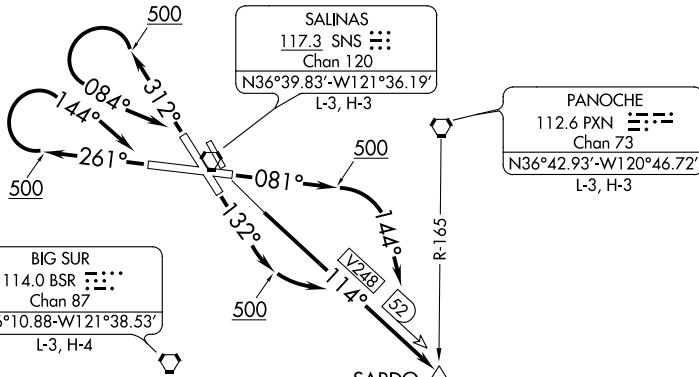
BIG SUR
114.0 BSR
Chan 87
N36°10.88'-W121°38.53'
L-3, H-4

SARDO
N36°05.24'
W120°47.59'
L-3

AVENAL
117.1 AVE
Chan 118
N35°38.82'-W119°58.72'
L-3-7, H-4

FILLMORE
112.5 FIM
Chan 72
N34°21.40'-W118°52.88'
L-3-4-7, H-4

ATIS
124.85
GND CON
121.7
NORCAL DEP CON
133.0 251.15
CTAF
119.525



TAKEOFF MINIMUMS

Rwys 8, 13: Standard with minimum climb of 360' per NM to 6000.
Rwys 26, 31: Cats A/B standard with minimum climb of 380' per NM to 6000.
Cats C/D standard with minimum climb of 550' per NM to 6000.

NOTE: Cat A/B aircraft departing Rwy 26 and 31 - Do not exceed 210 K until passing SARDO INT.

NOTE: Chart not to scale.

DEPARTURE ROUTE DESCRIPTION

TAKEOFF RUNWAY 8: Climb heading 081° to 500 then climbing right turn heading 144° to intercept SNS R-114 (V248) southeast bound to SARDO INT. Thence . . .

TAKEOFF RUNWAY 13: Climb heading 132° to 500 then climbing left turn to intercept SNS R-114 (V248) southeast bound to SARDO INT. Thence . . .

TAKEOFF RUNWAY 26: Climb heading 261° to 500 then climbing right turn heading 144° to intercept SNS R-114 (V248) southeast bound to SARDO INT. Thence . . .

TAKEOFF RUNWAY 31: Climb heading 312° to 500 then climbing left turn heading 084° to intercept SNS R-114 (V248) southeast bound to SARDO INT. Thence . . .

. . . Proceed on assigned route. Expect clearance to filed altitude 5 minutes after departure.

CHALONE THREE DEPARTURE

SW-2, 25 FEB 2021 to 25 MAR 2021

SW-2, 25 FEB 2021 to 25 MAR 2021