

APP CRS	Rwy Idg	8004
316°	TDZE	261
	Apt Elev	261

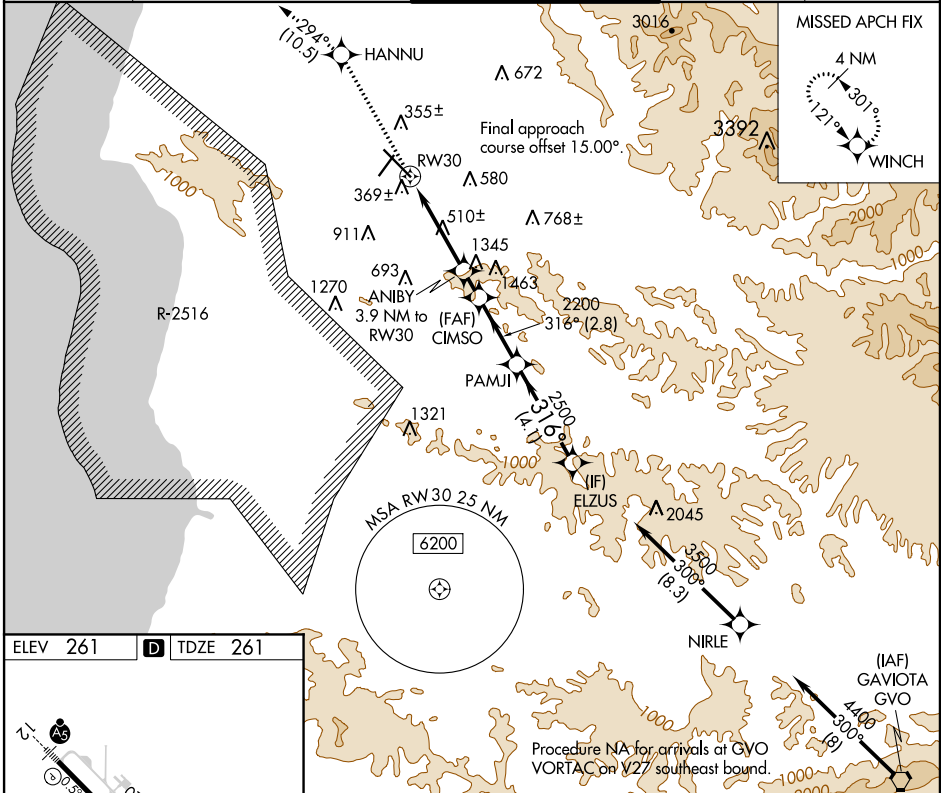
RNAV (GPS) RWY 30

SANTA MARIA PUBLIC/CAPTAIN G ALLAN HANCOCK FIELD (SMX)

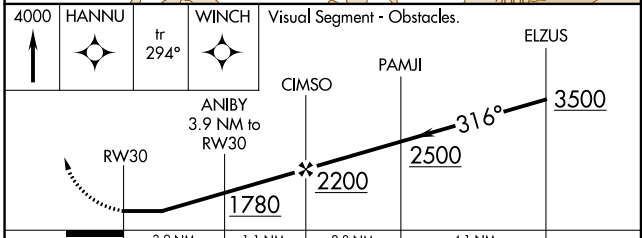
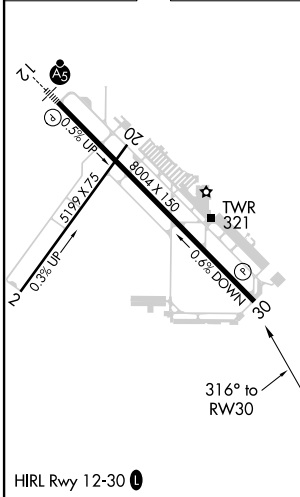
⚠ DME/DME RNP-0.3 NA. When local altimeter setting not received, use San Luis County Rgnl altimeter setting and increase all MDA 60 feet.
⚠ Rwy 30 helicopter visibility reduction below 1 SM NA. Straight-in Rwy 30 NA at night, Circling Rwy 2, 30 NA at night.

MISSED APPROACH: Climb to 4000 direct HANNU and on track 294° to WINCH and hold.

ATIS 121.15	SANTA BARBARA APP CON * 124.15 327.8	SANTA MARIA TOWER * 118.3 (CTAF) 239.25	GND CON 121.9	UNICOM 122.95
-----------------------	--	---	-------------------------	-------------------------



ELEV 261	D	TDZE 261
----------	----------	----------



CATEGORY	A	B	C	D
LNAV MDA	1600-1¼ 1339 (1400-1¼)	1600-1½ 1339 (1400-1½)	1600-3 1339 (1400-3)	NA
CIRCLING	1600-1¼ 1339 (1400-1¼)	1600-1½ 1339 (1400-1½)	1600-3 1339 (1400-3)	NA

SW-3, 25 FEB 2021 to 25 MAR 2021

SW-3, 25 FEB 2021 to 25 MAR 2021